

» 11« <»|. <

( 10243-75  
2837-81)

a

10243.75\*

(CT 2837—81}

Steel. Methods of test and estimation of macrostriae

10243—62

19 1975 . 2176

01.01.78

03.08.82 3031

01.01.88

PC 3629—72.  
2837—81.

\* ( 1985 . ) 1 1982 . ( 11—1982 ) ©

1.2. ( 0,3%)

1.3. , -

## 2.

2.1. )

2.1.1. 140

2.1.2. 140 -

, -

— 250 .

2.2. ( )

1 < ) , ( - -

) -

; — -

, ) ( ) ;

. - ;

(111) - ( ), - ( ), - ( ) -

) - ;

+ - ( ) - + - ( ), -

2.3. , , -

20 ' .

2.4 -

( )

), , ( )

( ) .

1

2.5. ;

2.5.1. , , -

2.5.2. ( ) -

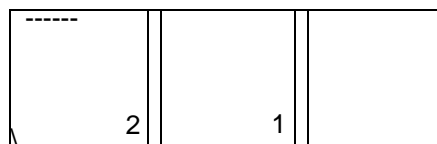
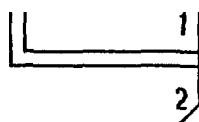
90—140 ,

2.5.3. — -

2.5.4.  
2.5.5.  
)

15—40  
(  
( . 1). 200

/ \



. 1

26.

:  
,

, 20

2789—73.  
388 (

2.7.

3,1 ).

2.8.

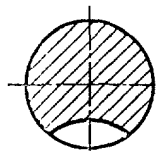
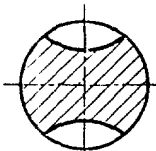
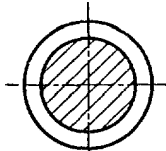
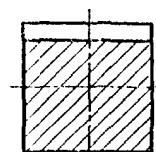
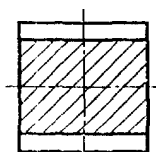
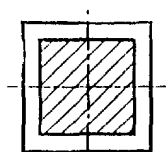
.

]

2.8.1.  
)

. 2

(



*a*

*δ*

*δ*

. 2

2.8.2.

80

:

10

80

5

( )

**3.**

### 3.1.

3.2.

100—	10	2
500—	100	2
2000—	1000	2

$$3 \left( \begin{array}{c} \cdot \\ \cdot \\ \cdot \end{array} \right):$$

60—80° , . . .

3.3.

1.

### 3.4.

1):

3.5.

3.6.

3.7.

10%-

4.

4.1.

2)

3 4.

 $(\quad, 4),$ 

4.

4.2.

:		
1	1	—
2	2	—
3,		36—
4	4	—
5	5	—
	6	6 —
7	—	
8	—	
9	—	
10	—	

(                    ).  
90—140

4.3.

1, 2, 3, 36, 4, 5, 6, 7, 8, 9,  
1, 2, , 4, 5, 6, 10.

140      250      —

140      250

90—140

7, 8, 9 (10).

( -



<https://minable.ru/gosty>

( . )

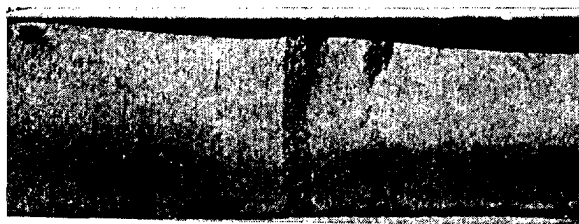
1. — , .  
( ) 2. — , ( 1 1 ).  
2.1. , — ( )  
( ) ( 2 2 ).  
2.2. — :  
( 3 ) ( 36 ) .  
( ) —  
( ) ( 4 4 ).  
2.3. ( 5 ).  
7« ),  
2.4. — , ( G ).  
( 5, . 1),  
( 5, . 2).  
3. — : « ».  
( 7).  
4. ( 8).  
( )  
« »  
5. — ,  
( 9).  
6. ( , ) ( — 10 ).



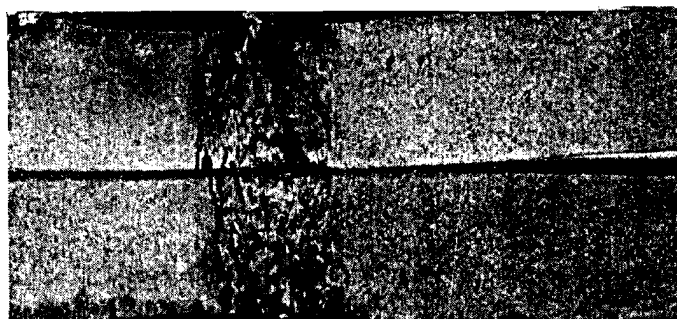
1. —  
( . 1 , ).
2. —  
( 2).
3. —  
( . 3).
4. —  
( . 4 , ).
5. —  
( . 5 , ).
- 6.1. —  
( . 6 , )
- 6.2. —  
( . 7 , ).
7. —  
( . 8 , ).
8. —  
( . 9 , ).
9. —  
( . 10 , ).
10. —  
( . 11 , ).
11. —  
( . 12 , ).
12. —  
( . 13 , ).
13. —  
( . 14 , ).
14. —  
( . 15 , ).
15. —  
( . 16 , ).



23. ( ) —  
 ( . 22).  
 24. ( . 23 ),  
 ( . 236).  
 25. ( . 24 ) ( . 246)  
 26.  
 26.1. oil ( . 25 )—  
 26.2. ( . 256) —  
 26.3. ( . 25 ) ( . 25 ). —  
 26.4. ( 256).



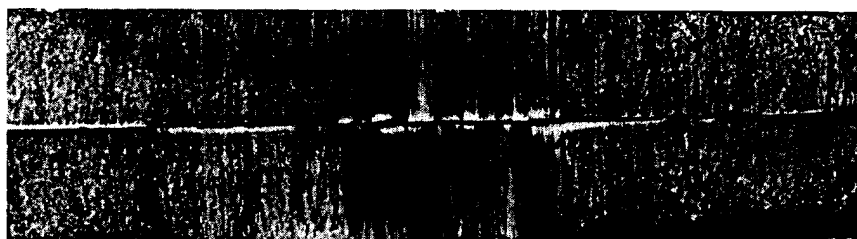
. 2



. 3



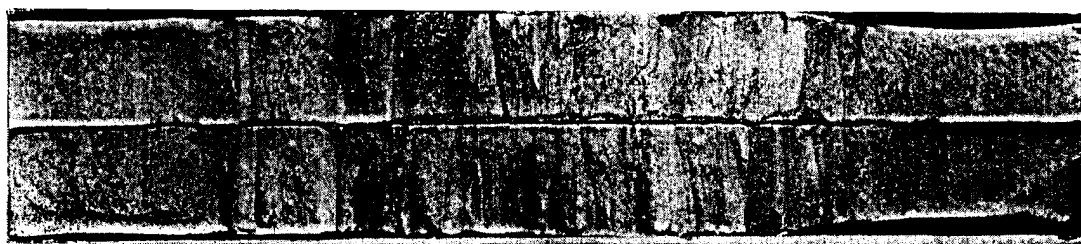
a



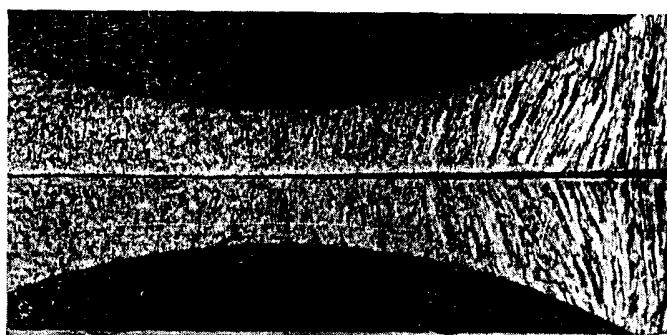
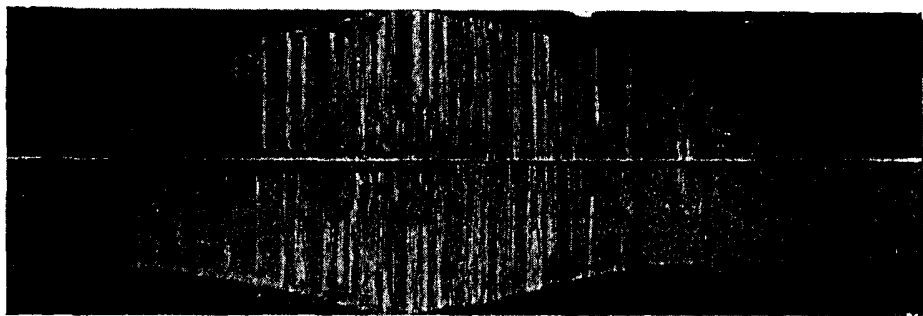
. 4



—

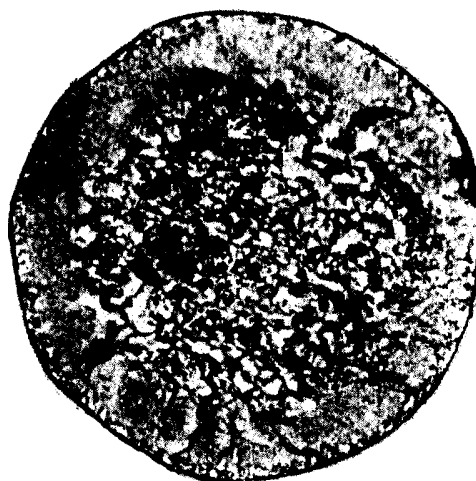


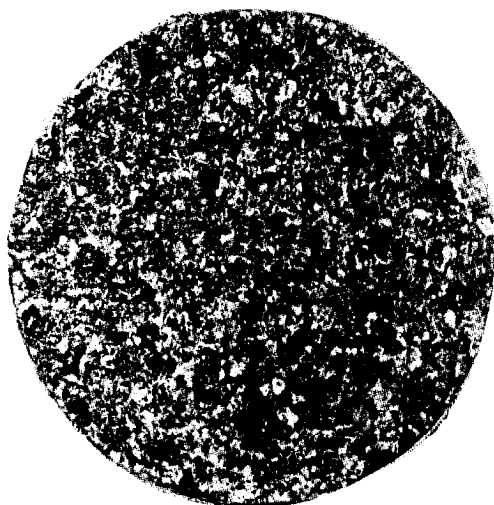
— ( )



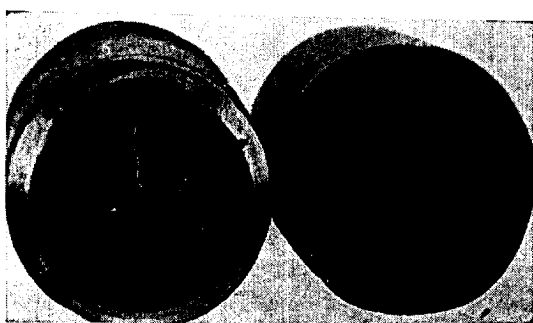
. 5

Обезуглерожженный слой (после сильного  
перегрева металла)



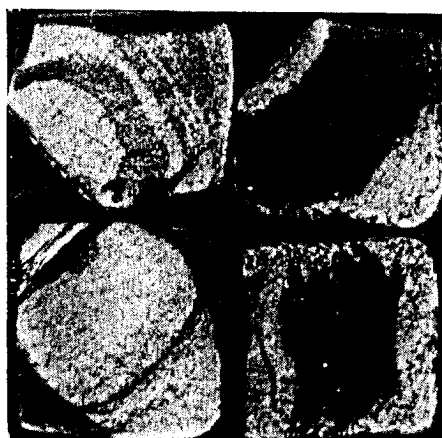


. 7

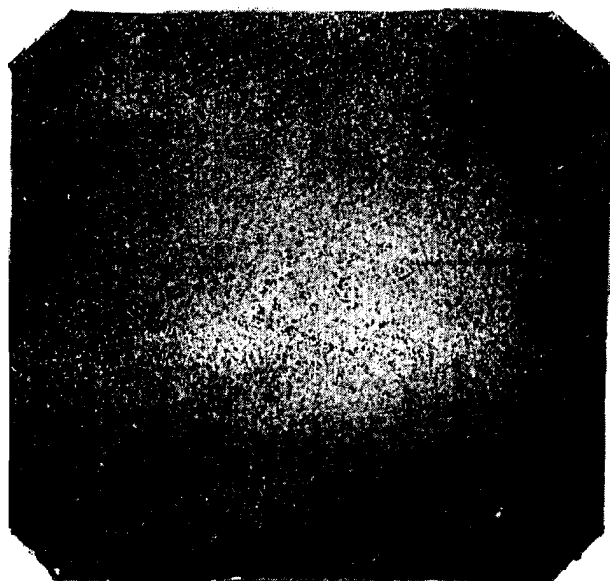


Черт. 8

Черный излом



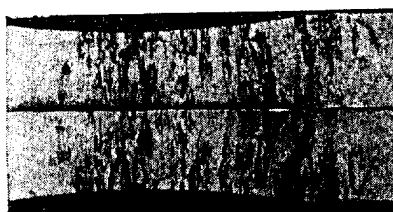
. 9



*a* — титана

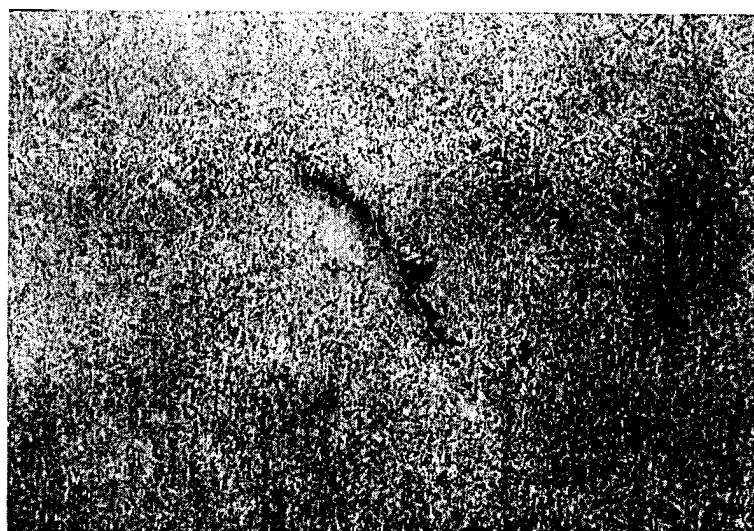


*б* — церия

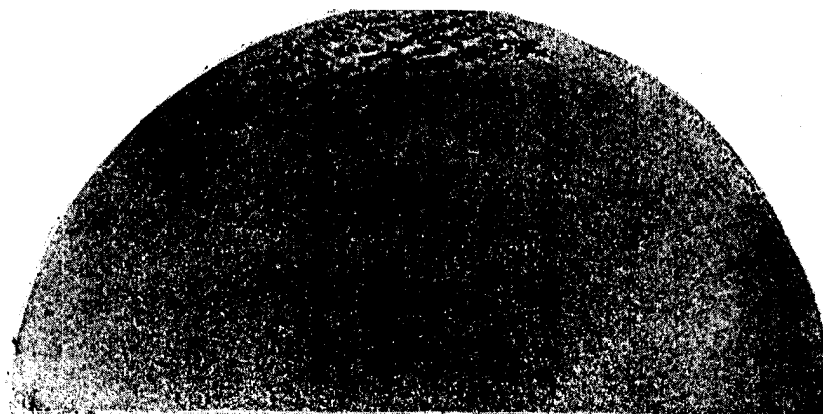


—  
. 10

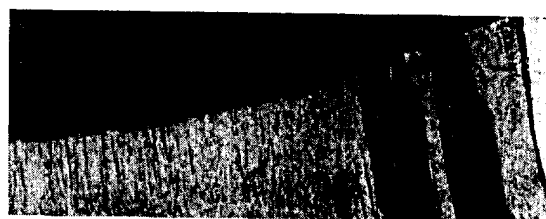
( )



— ( )



—



— ( )

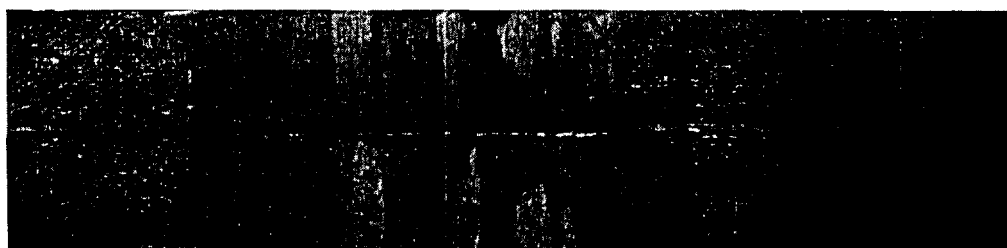
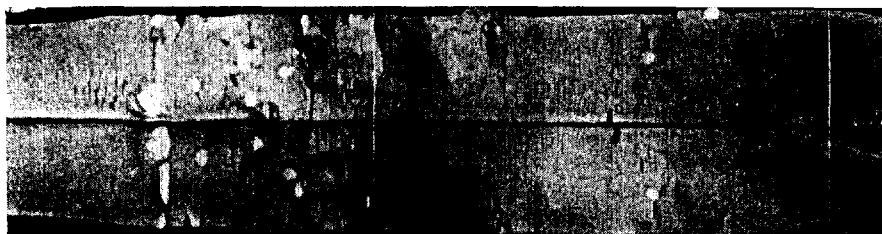
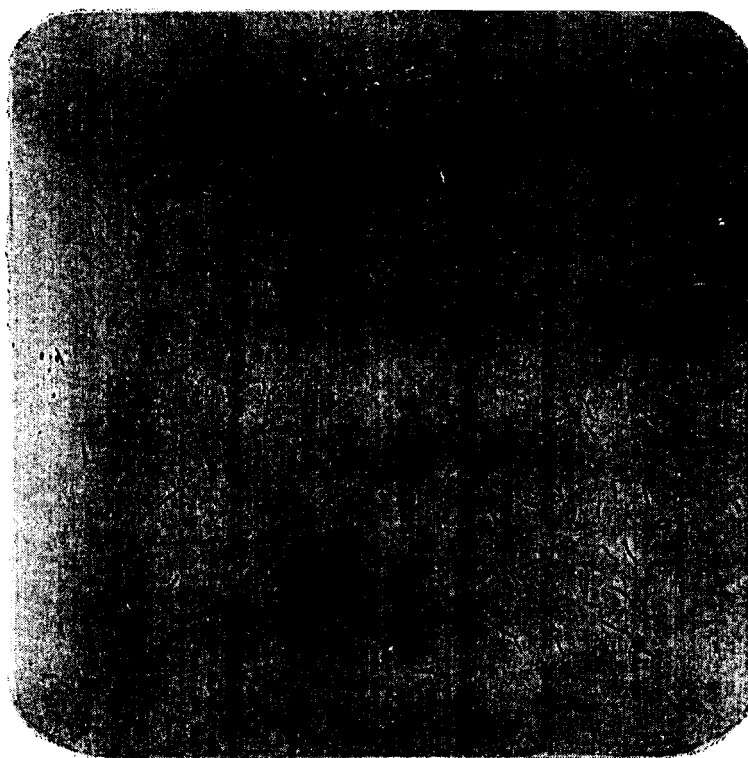
—

. 11

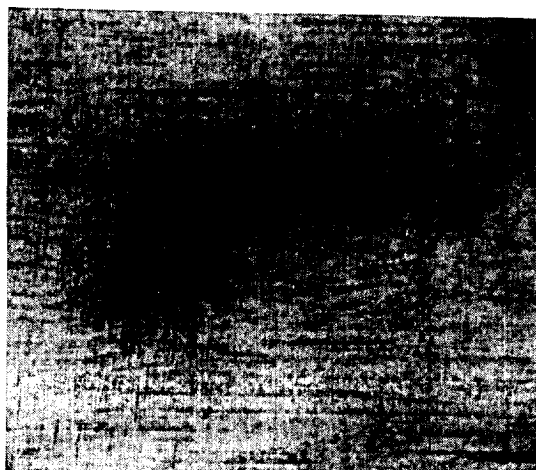


. 12

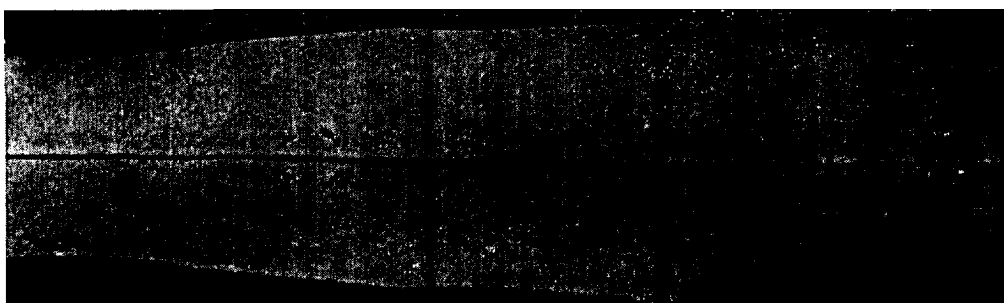




— 1%



— »



— . 13

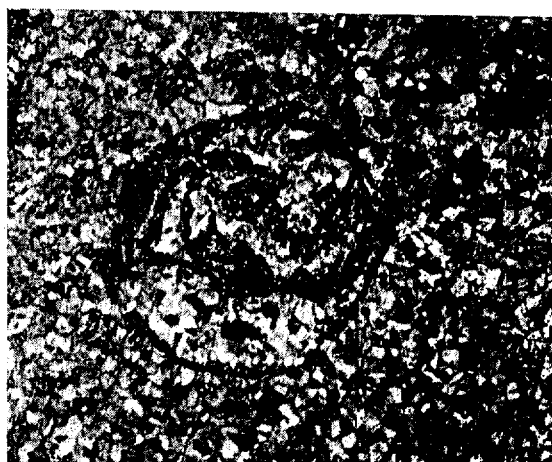


. 14





*a* — сосульки



*z* — корона

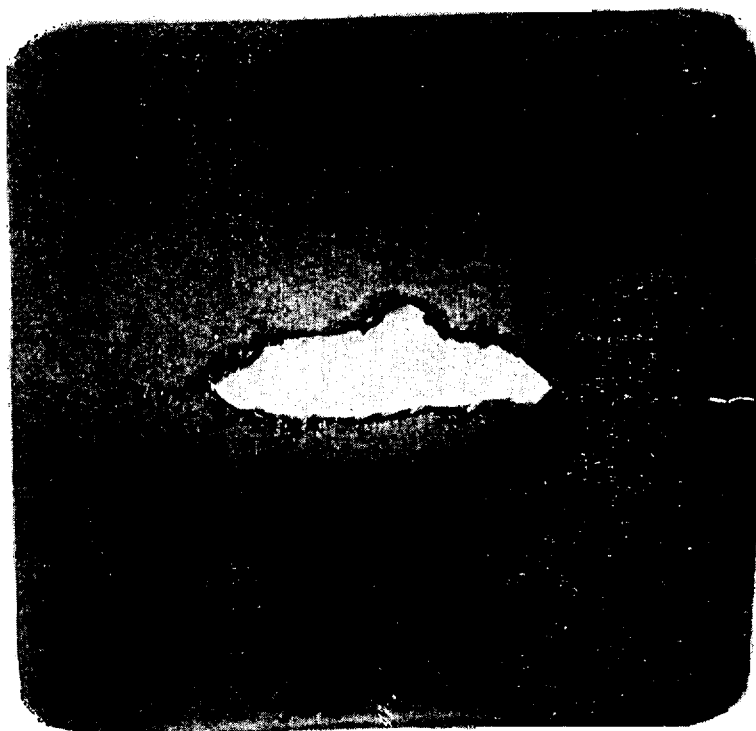
. 15

( , )

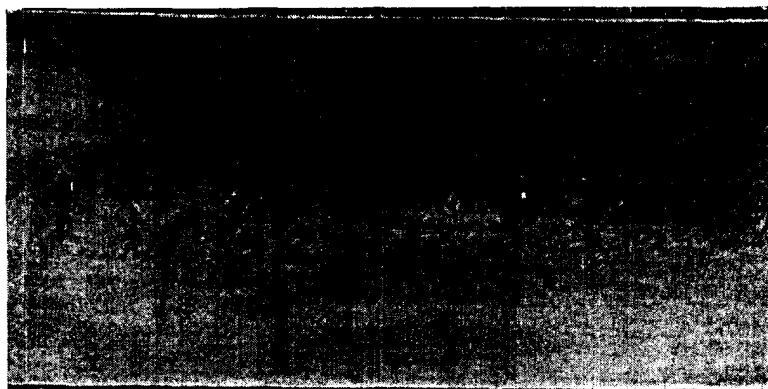




. 16

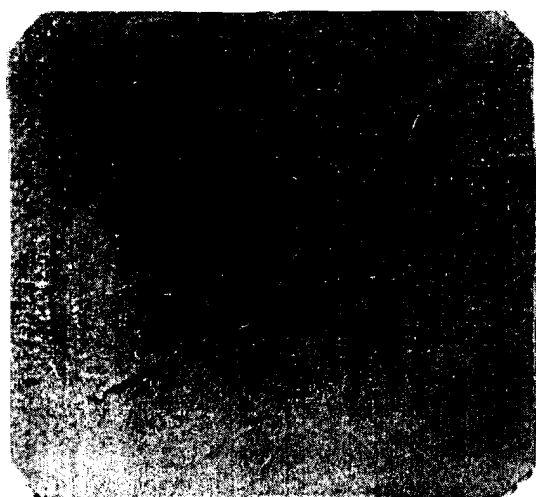


. 17



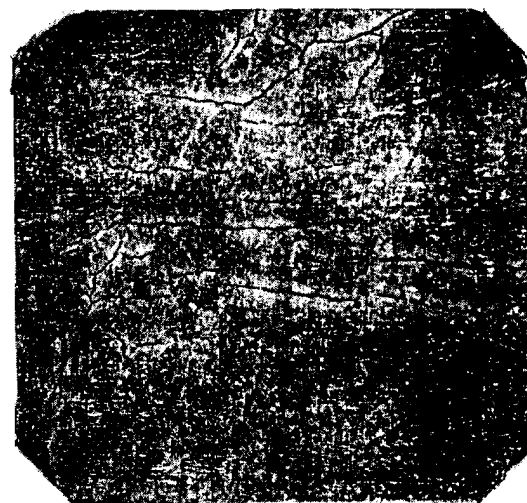
. 18

Ковочные трещины

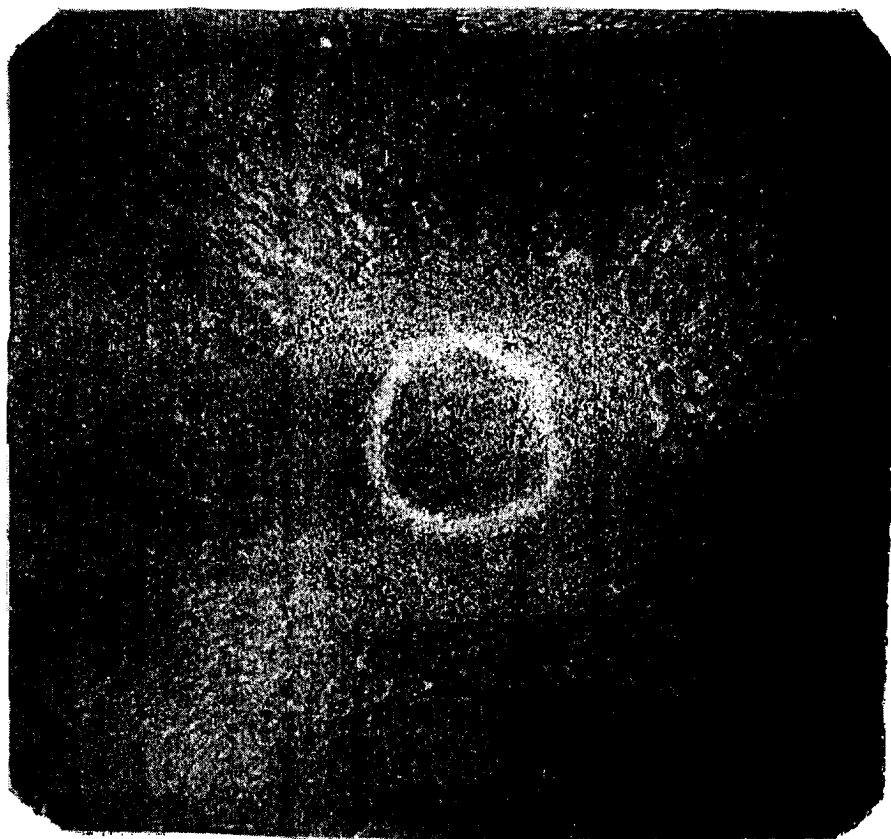


Исп. 19

Шлифовочно-травильные трещины



. 20

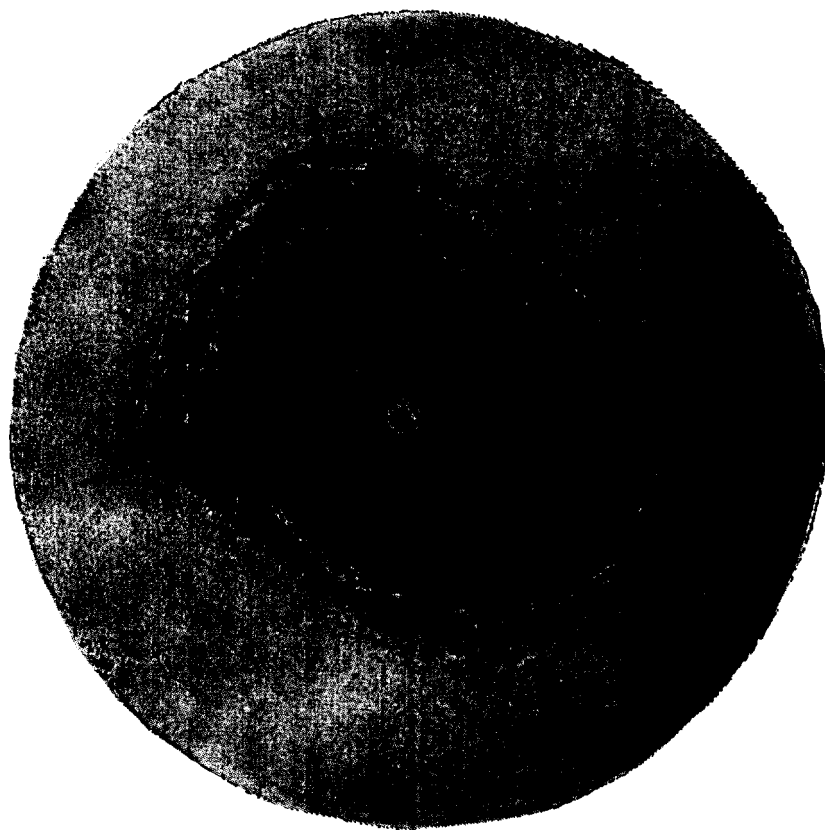


. 21

( )

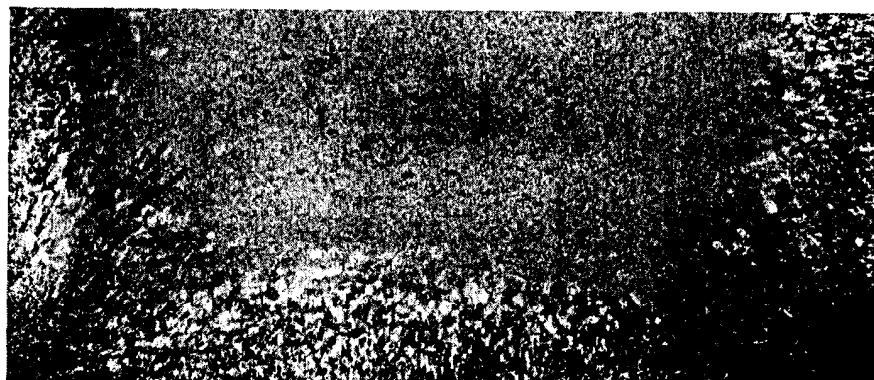
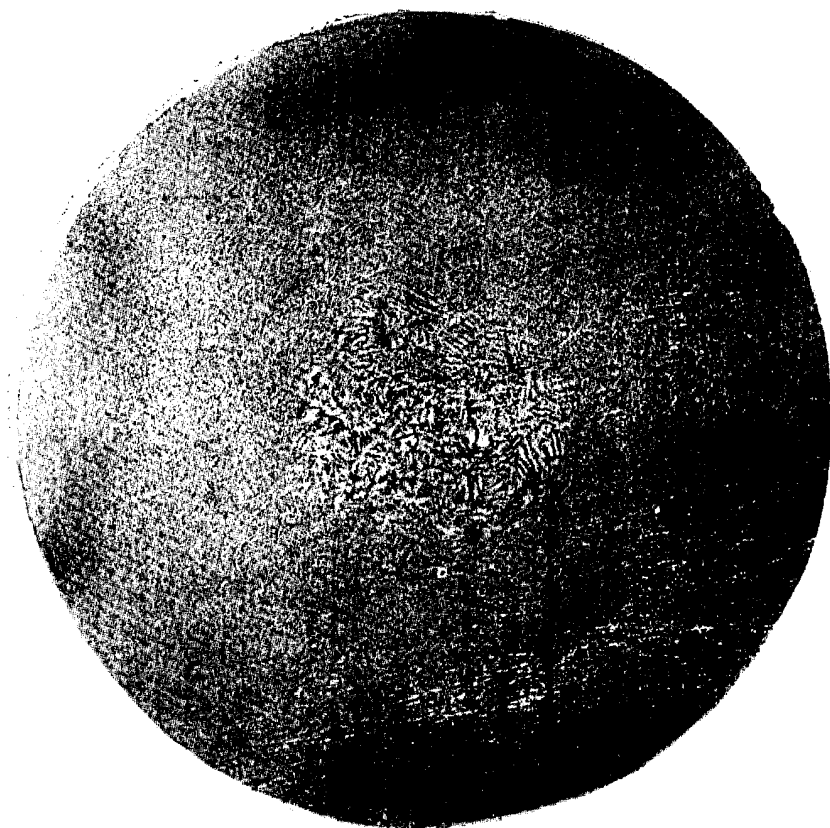


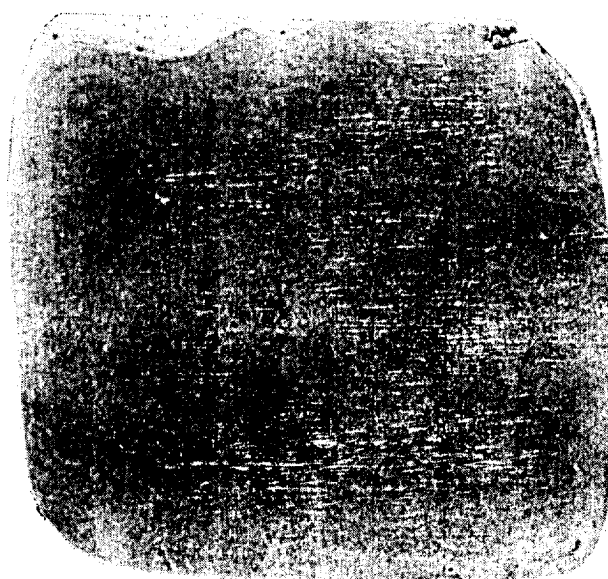
. 22





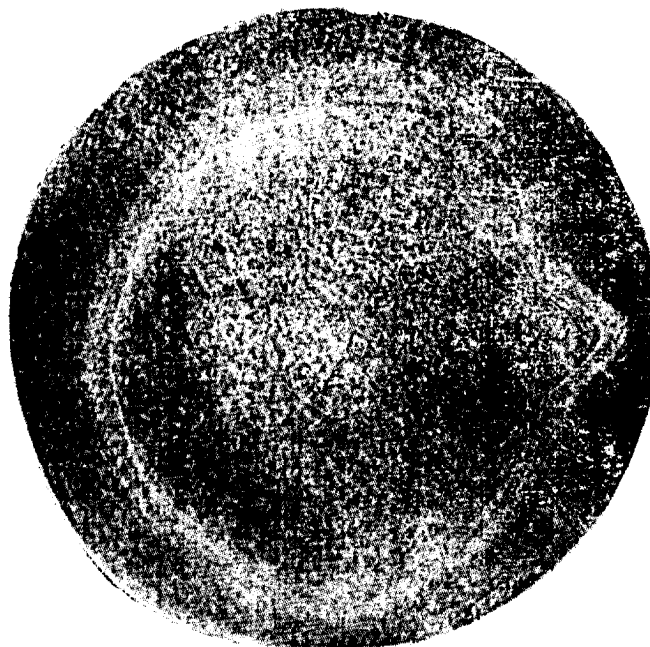
Остатки литой структуры







а — местная грубая неоднородность (электропробой)



2



>

[illegible]

I

1

2

2

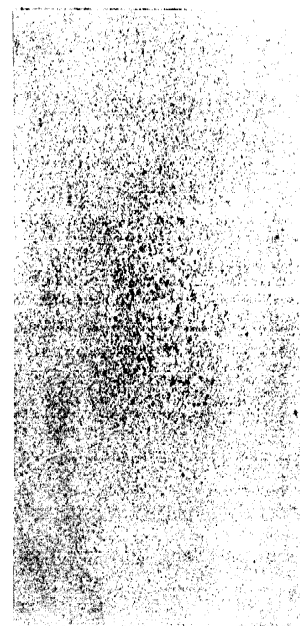
10.07 81 . 28 03.85 3,1> . -5 . 5.0 . 8 75 \  
-orr. 7,7'1 . '1 . 8000 70 .  
« \* ,123810, , ,  
.,3. , 255 3100  
., > .



БАЛЛ 1



БАЛЛ 2

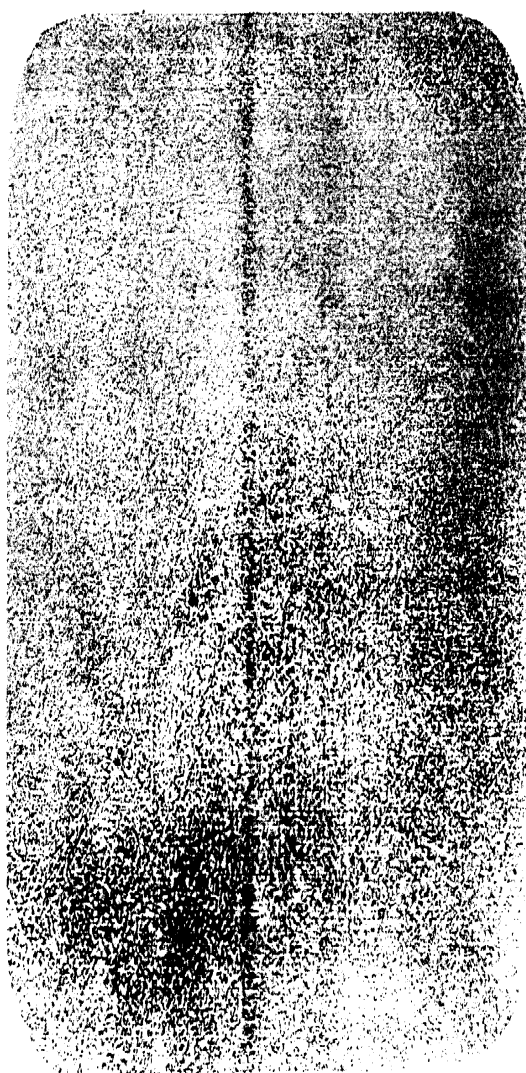


БАЛЛ 3

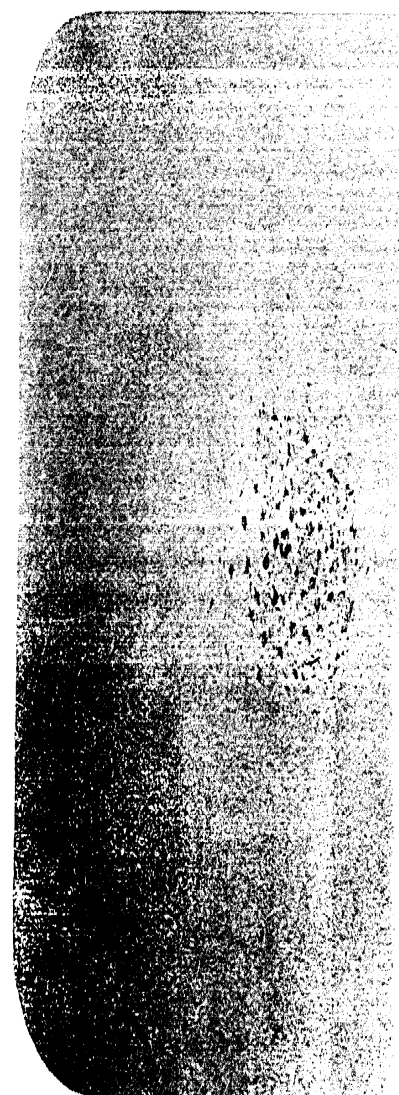
ШКАЛА № 1a ЦЕНТРАЛЬНАЯ ПОРИСТОСТЬ



БАЛЛ 1

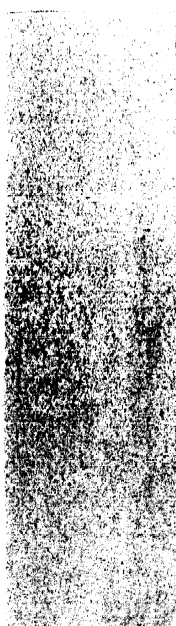


БАЛЛ 2



БАЛЛ 3

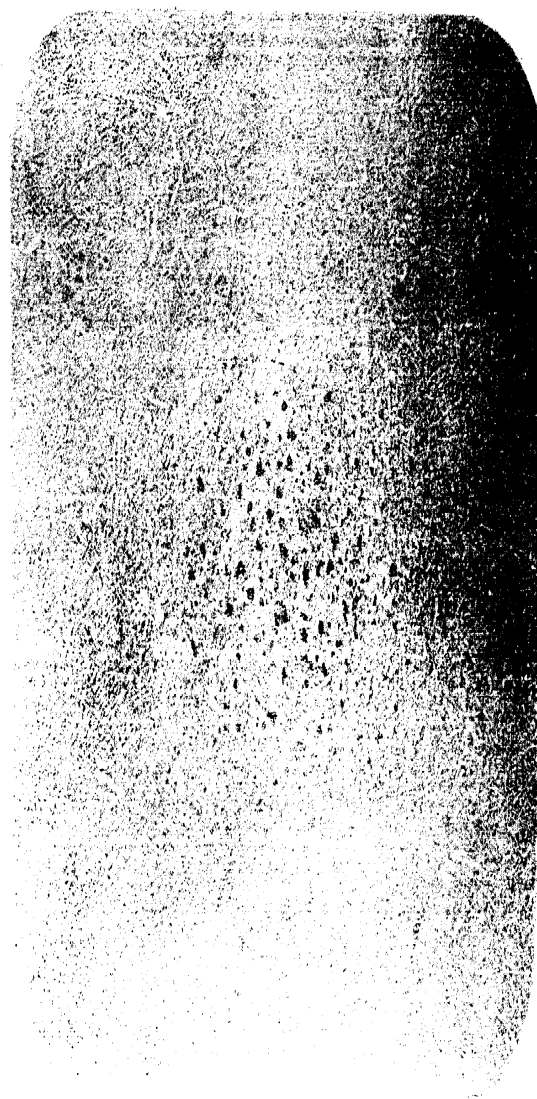
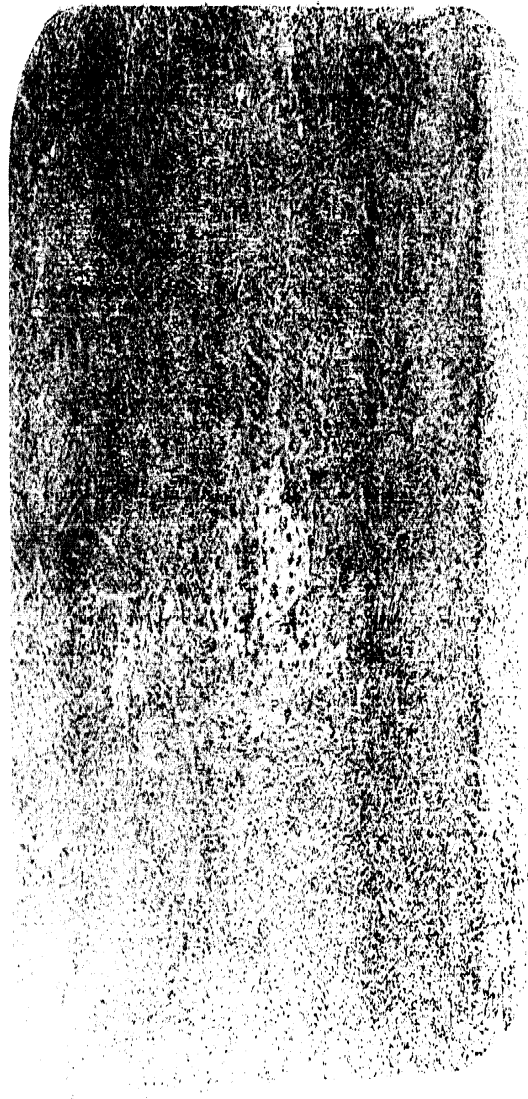
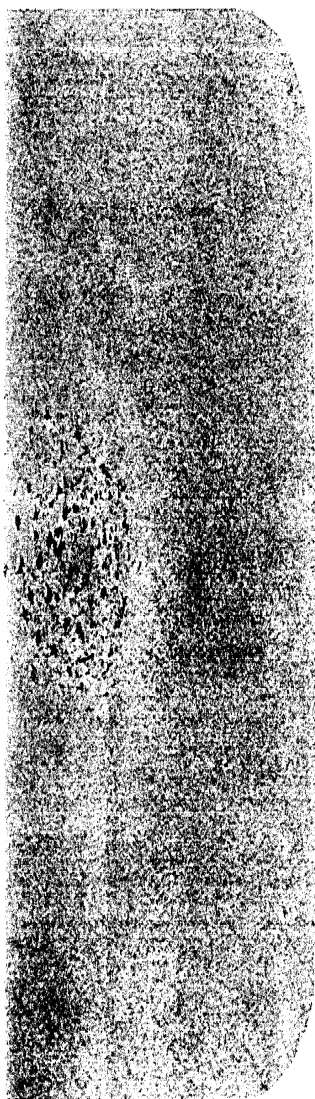


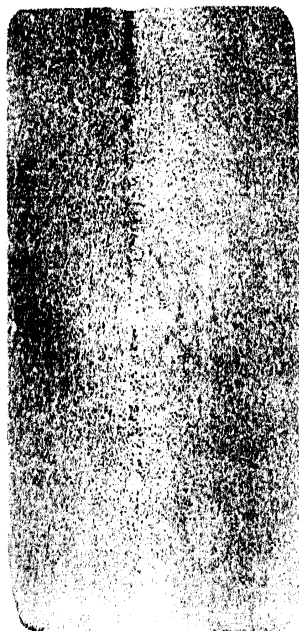


4

5

БНАЯ ПОРИСТОСТЬ





БАЛЛ 1



БАЛЛ 2

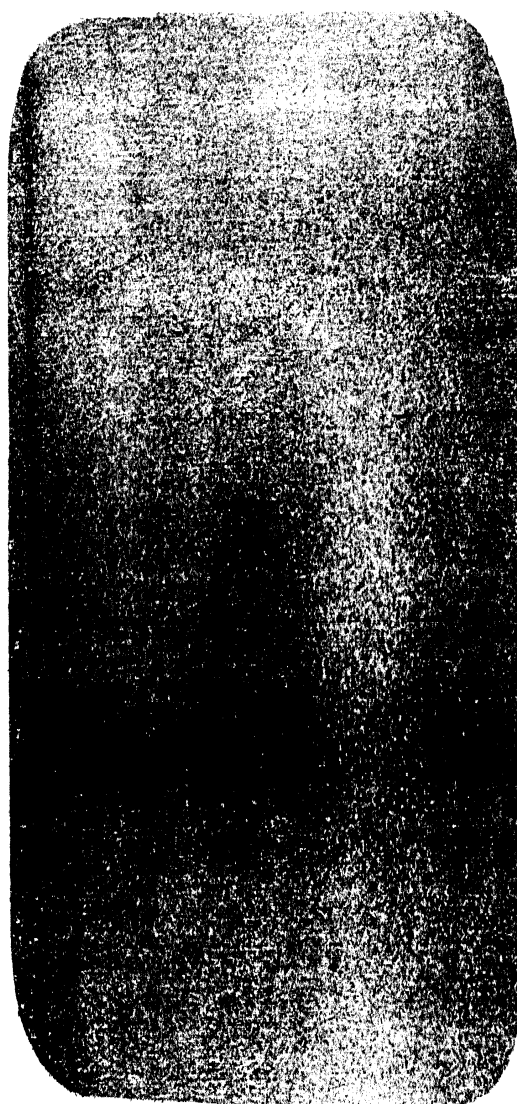


БАЛЛ 3

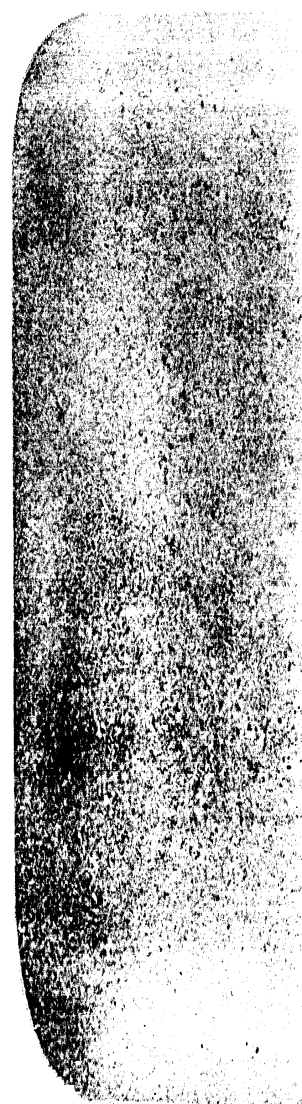
ШКАЛА № 2а ТОЧЕЧНАЯ НЕОДНОРОДНОСТЬ



БАЛЛ 1



БАЛЛ 2



БАЛЛ 3





БАЛЛ 3

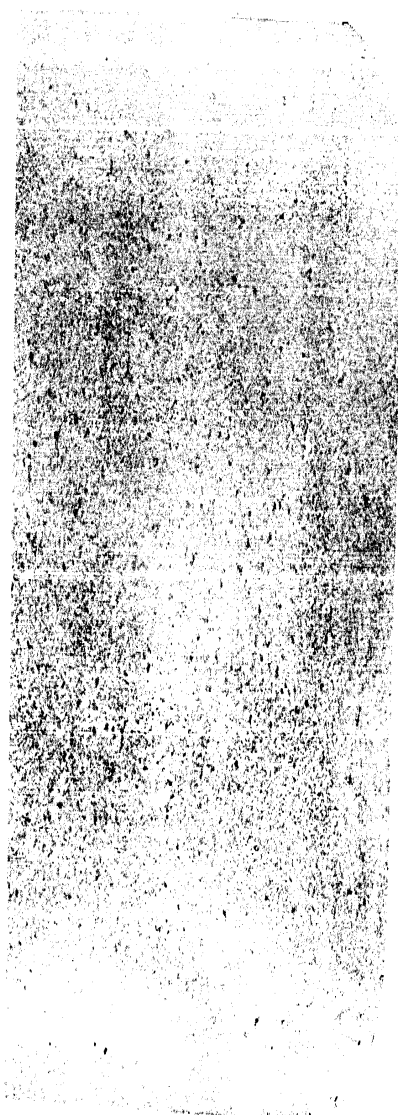


БАЛЛ 4

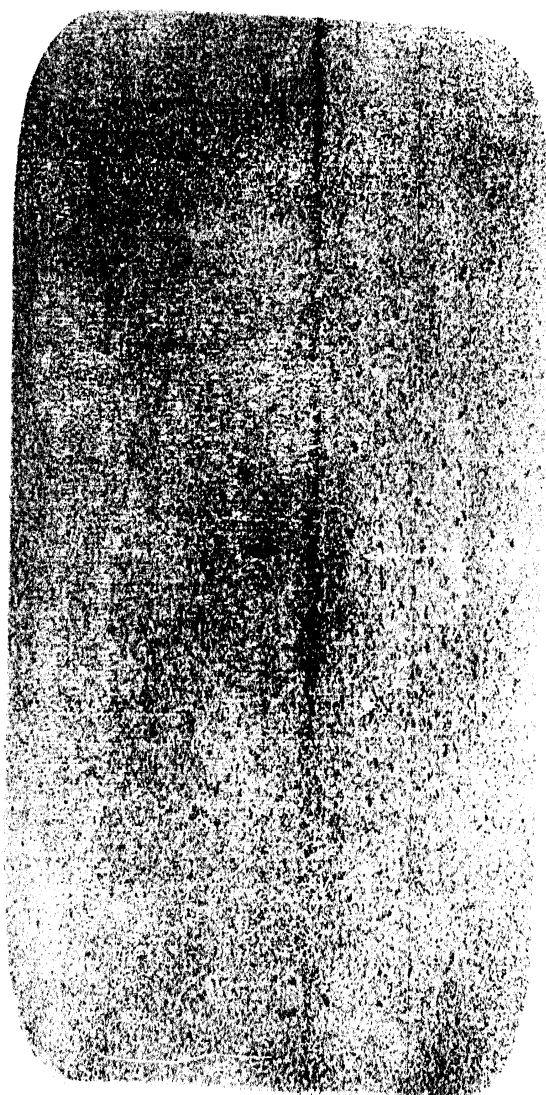


БАЛЛ 5

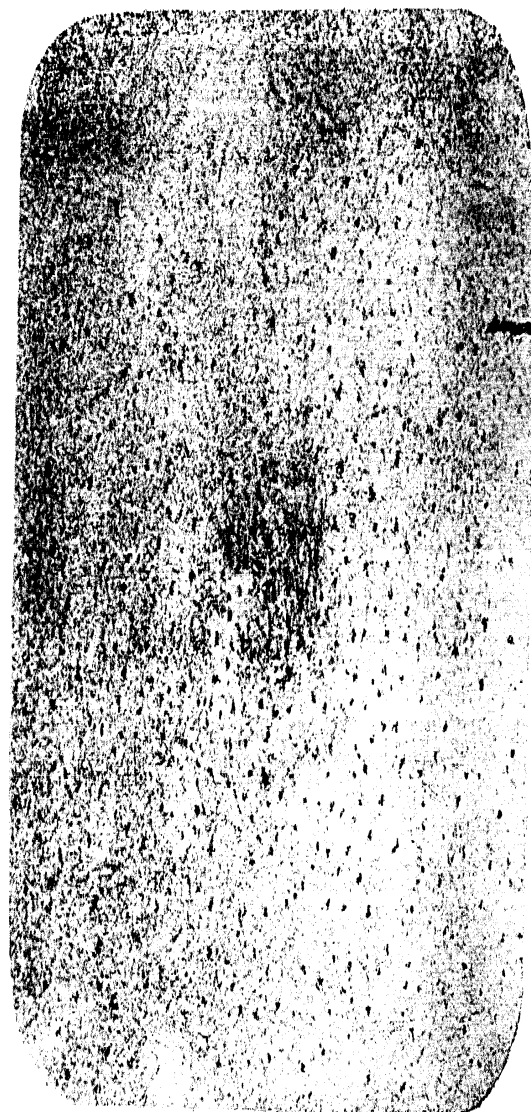
НЕОДНОРОДНОСТЬ



БАЛЛ 3



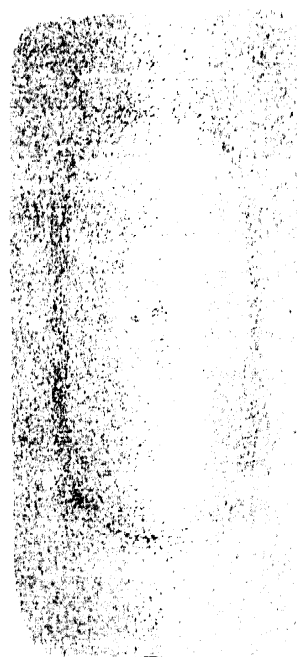
БАЛЛ 4



БАЛЛ 5



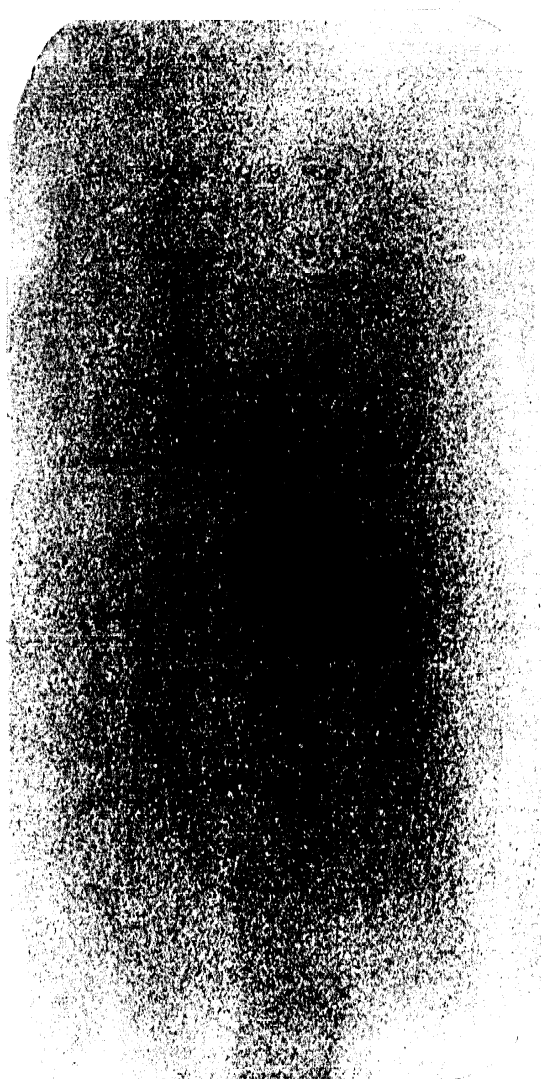
БАЛЛ 1



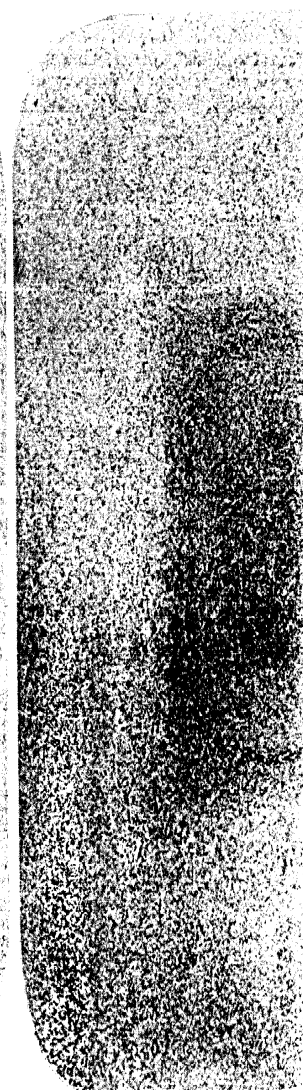
БАЛЛ 2



ШКАЛА № 5



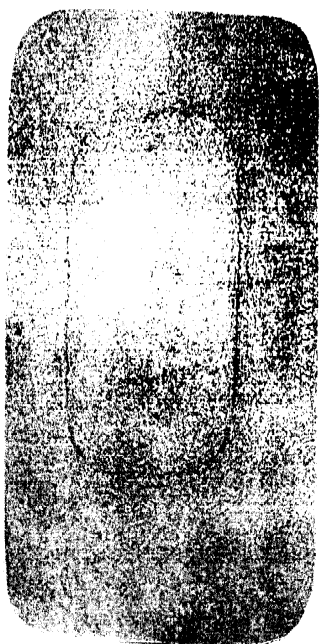
БАЛЛ 2



БАЛЛ 1



БАЛЛ 3

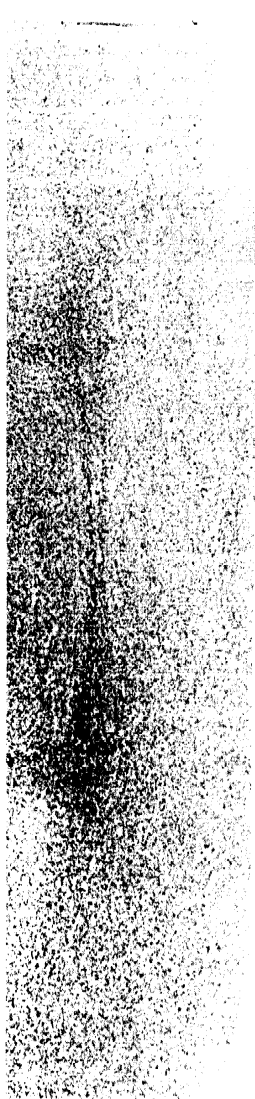


БАЛЛ 4

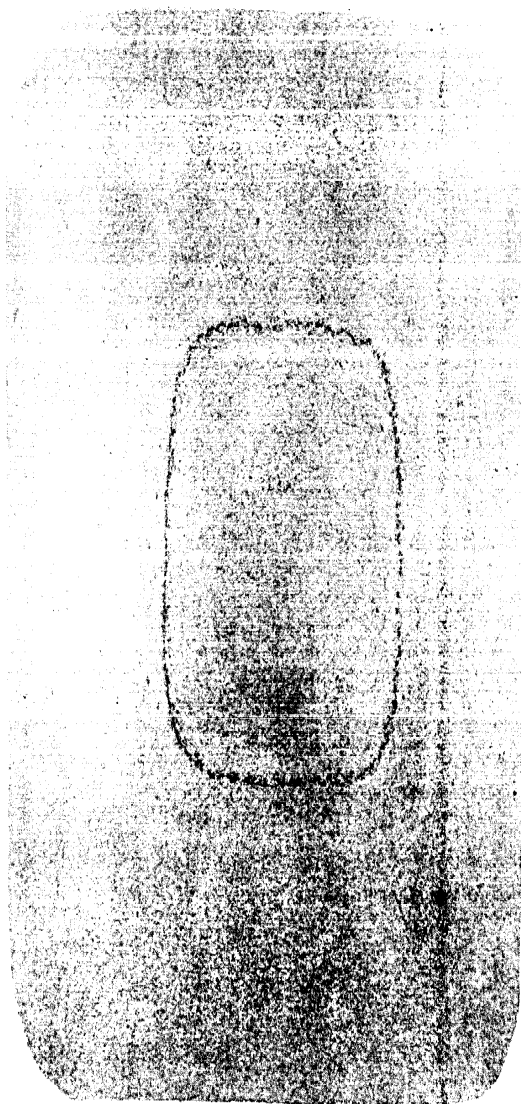


БАЛЛ 5

БА ЛИКВАЦИОННЫЙ КВАДРАТ

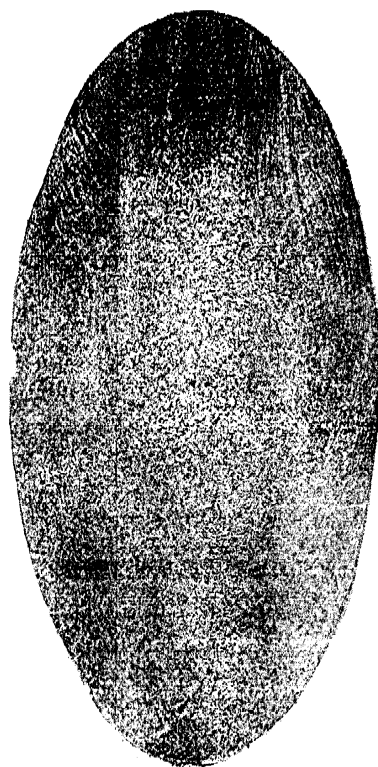


ТМ4

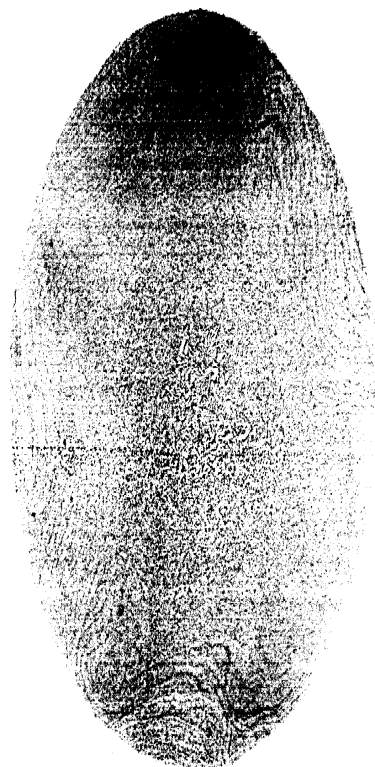


5

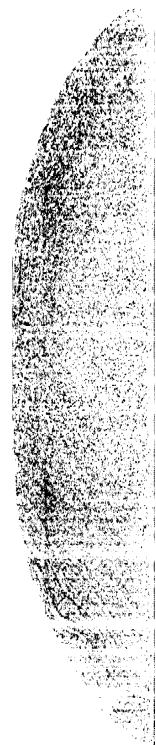


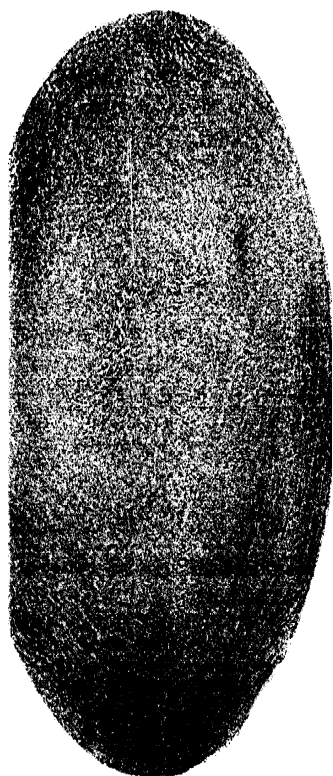


БАЛЛ 1



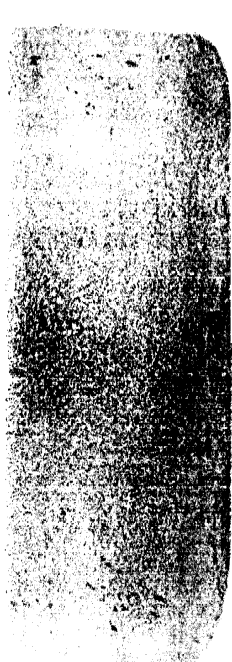
БАЛЛ 2



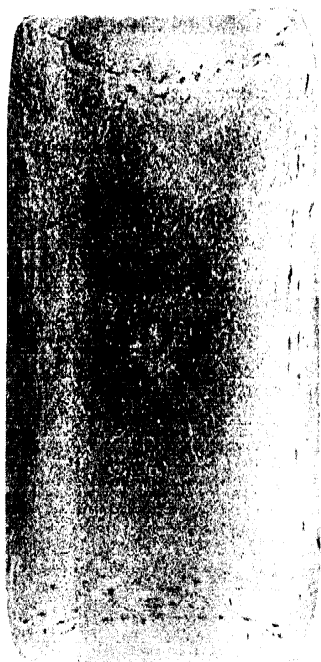


\ ( )

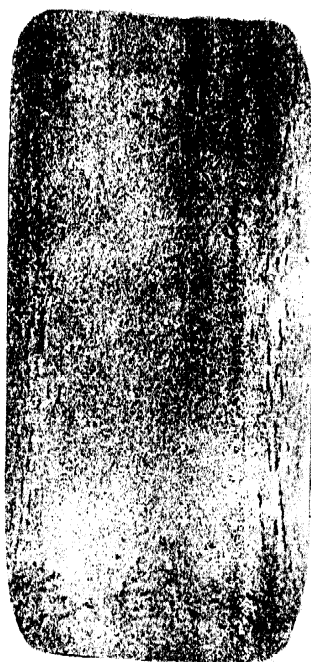




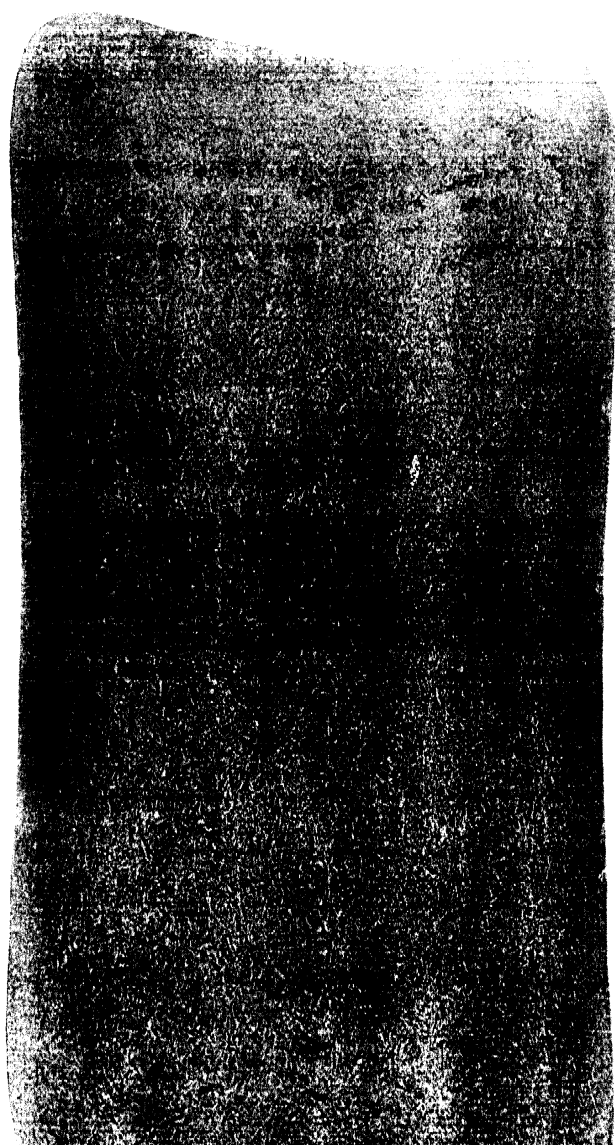
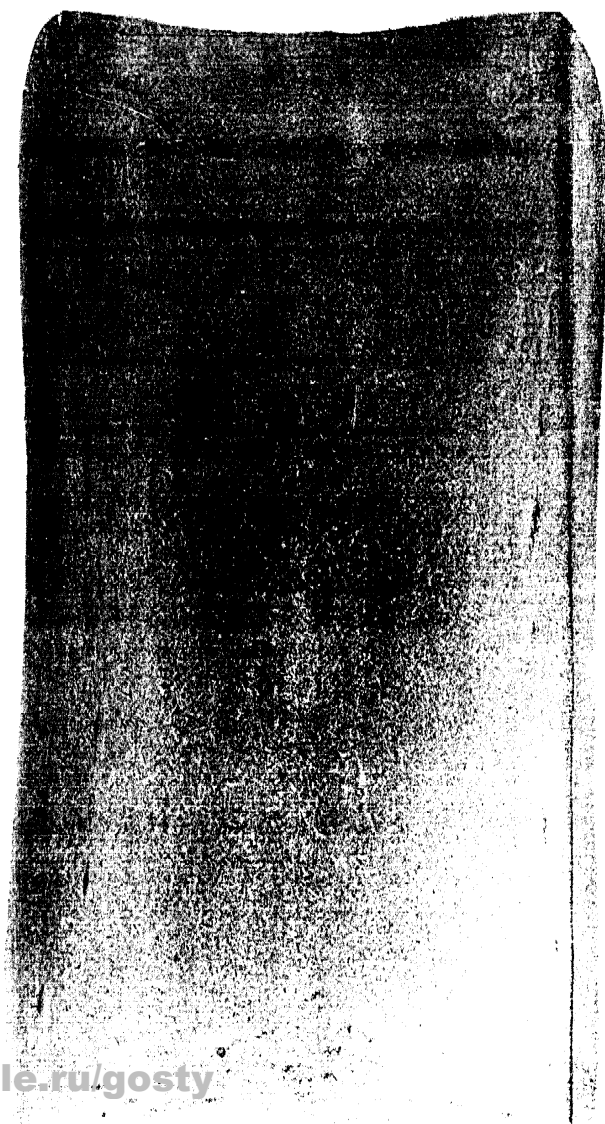
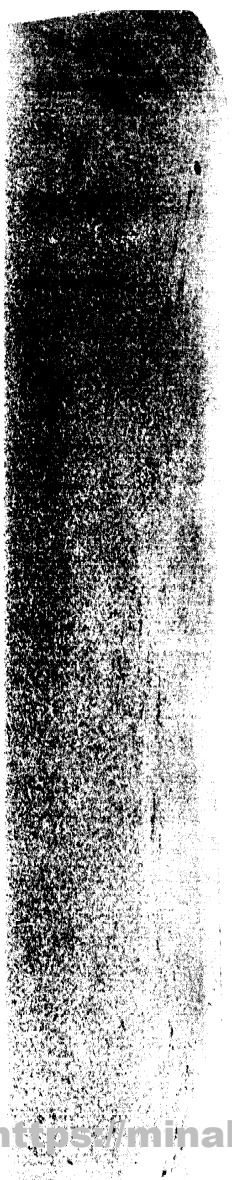
БАЛЛ 3



БАЛЛ 4



БАЛЛ 5

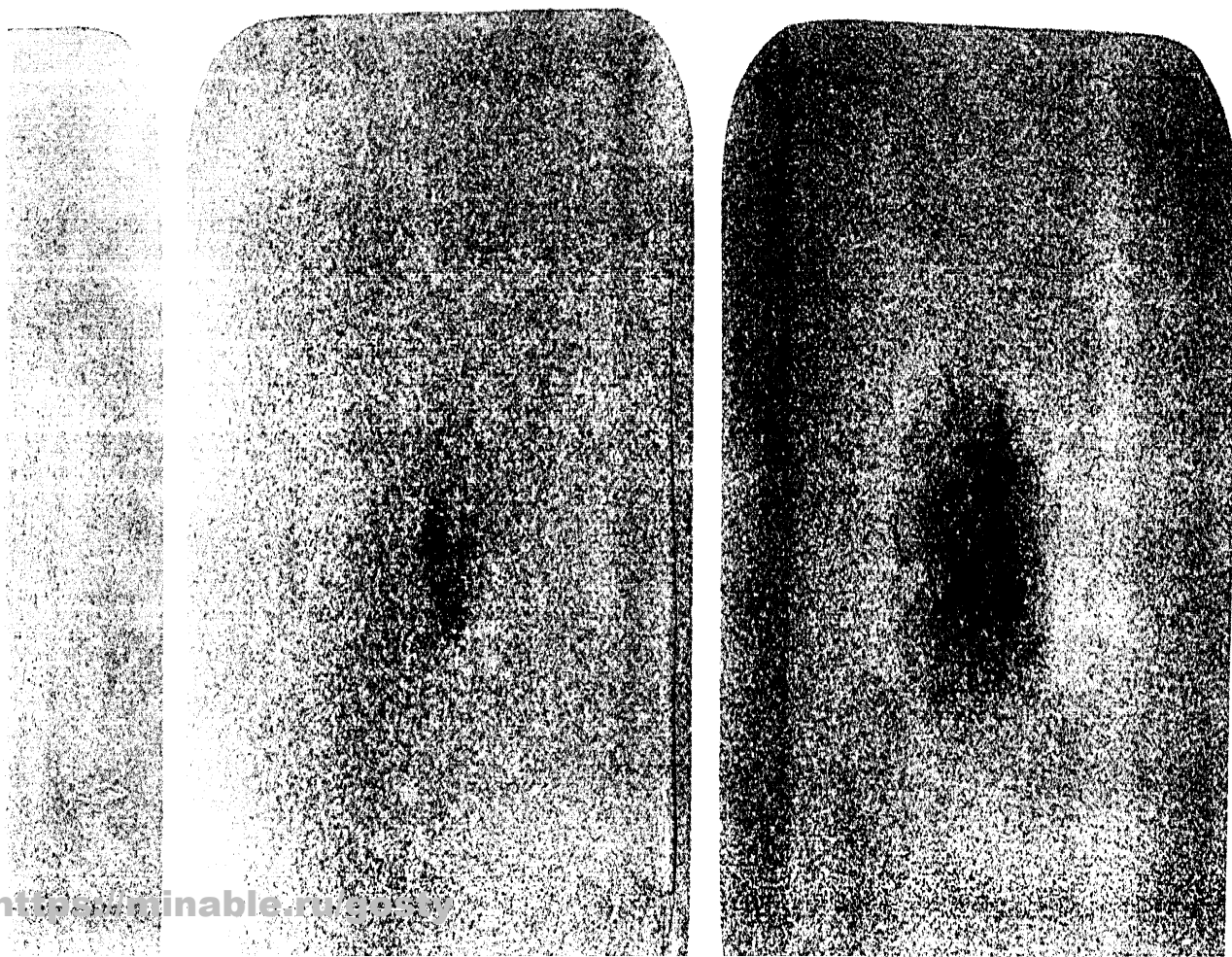


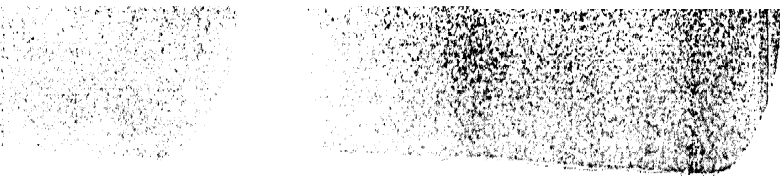


БАЛЛ 4

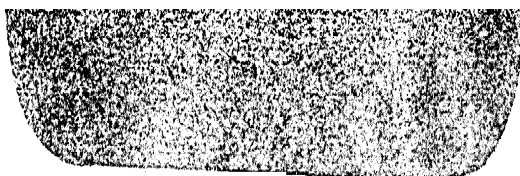
БАЛЛ 5

ИКВАЦИЯ

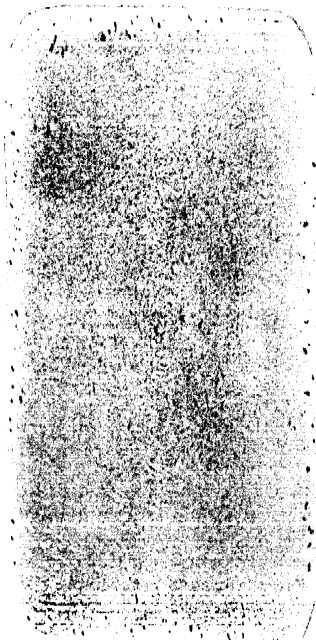




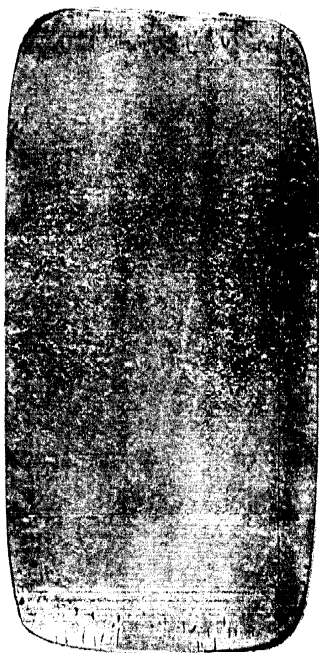
БАЛЛ 4



БАЛЛ 5



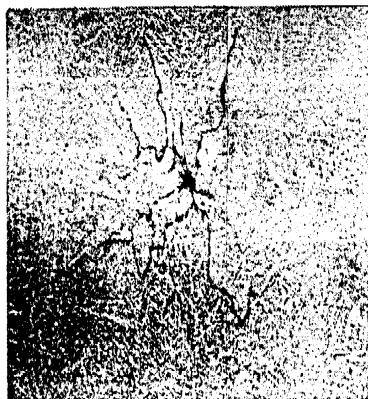
БАЛЛ 4



БАЛЛ 5

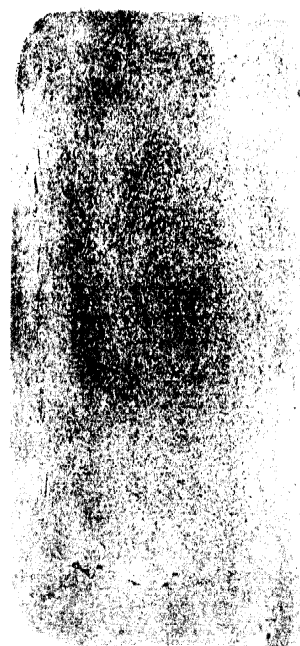


БАЛЛ 4



БАЛЛ 5





2

JHA

1