

11521—82

Plain bearings pillow blocks with
two bolt holes. Design and dimensions.

11521—65

418000

26 -

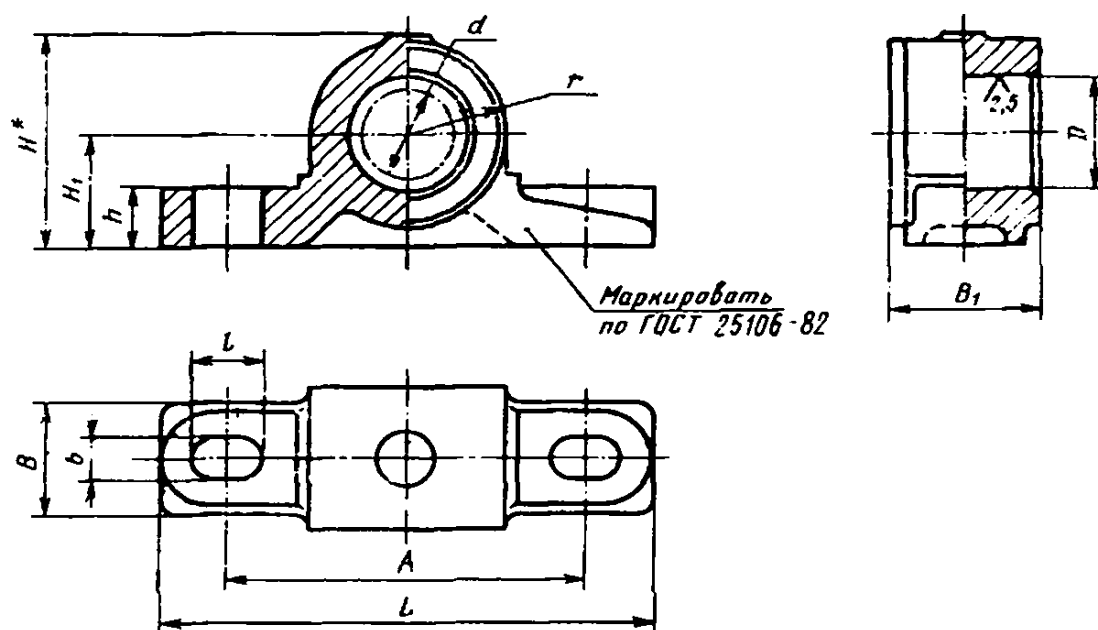
1982 . 273

01.07.83

1.

2.

11525—82.



*

1994 .

©
©, 1982
, 1994

MW

	d		$D(\cdot, '8)$			L		Hl			<	b	J												
	IA *	2 «	1 *																						
12X16	14	12		18	65	90	45	22	12	16	16	9	13	19											
12X20										20	20														
14X16										16	16														
14X20																									
16X20	18	16		22	75	105	50	25	14	20	20		17	21											
16X25										25	25														
18X20										20	2)														
18X25										25	25														
20X25	20																								
20X32	25	32																							
22X25	22		28		80	120	58	28		20	25			25											
22X32																									
25X32										25	32					100	140	68	31	IG	25	32	13	20	30
25X40																					32	40			
28X32	25	32																							
28X40																									
32X40	32		40		120	165	80	42	20	32	40	17	24	35											

	d		$D(\quad, \quad)$			l		Hi	h		,		l		
	$\begin{matrix} It \\ * \end{matrix}$		$\begin{matrix} 1- \\ * \end{matrix}$	$\begin{matrix} 9- \end{matrix}$											
32X50	32		40		120	165	80	42	20	40	50	17	24	35	
35X40	35		45							32	40				
35X50										40	50				
40X50	40		50		145	200	95	48	25	50	63	22	32	41	
40X63										50	63				
45X50	45		55							40	50				
45X63										50	63				
50X63	50		60		165	220	112	56		63	80			52	
50X80										50	63				
55X63	55		65							63	80				
55X80										63	80				
63X80	63		73	—	200	270	1'0	71	32	63	80	26	39	63	
63X100											80				100
70X80	70		85								63				80
70X100											80				100
80X100	80		95		235	315	165	85	36	80	100	33	48	75	
80X125										100	125				

	1- ,	a d	0 it 1- *	, 6) 2-		L		W.	ft		,		/	
90X100	20		105		245	315	165	85	36	80	100	33	48	75
90X125														
100X125	100		115		266	345	195	103	40	100	125	39	58	90
110X125	110		125											
125X125		125		140	310	410	226	118	45	125	160	39	58	105
125X160														
140X125		140		155	330	430	245	125	45	100	125	39	58	115
140X160														

* I*

()

,

.

$t=32$; $Bi = 50$:

32X50

11521—82

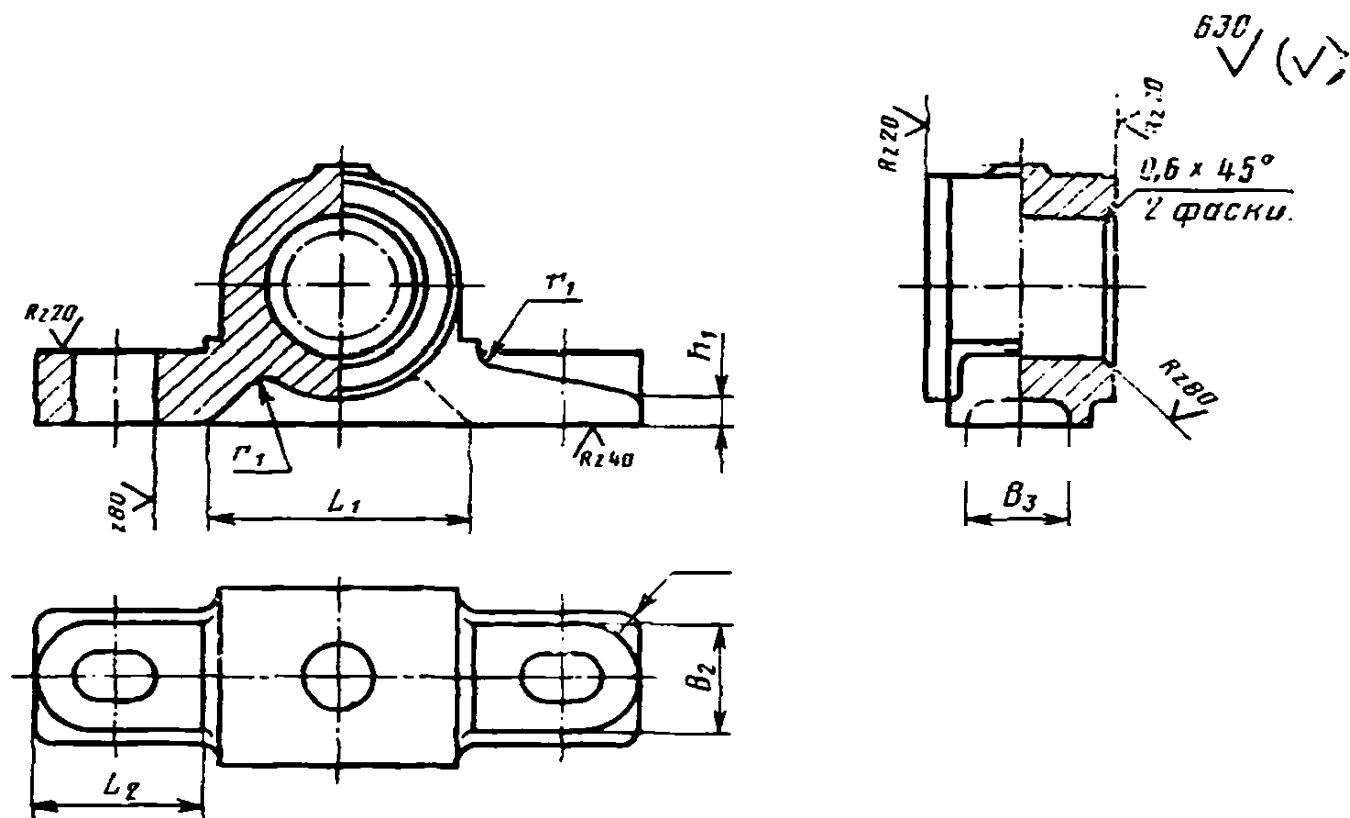
3.

—

25106—82.

4.

—



$L_1 = 2r_1$; $r_1 < 1,86$; $r_2 = (0,554-0,85)$ $< 0,3/\lambda$.

*