

11607—82

Plain bearings split bearing blocks
with two bolt holes. Design and dimensions.

11607—65

417210

26 -

1982 . 274

01.07.83

1.

-

,

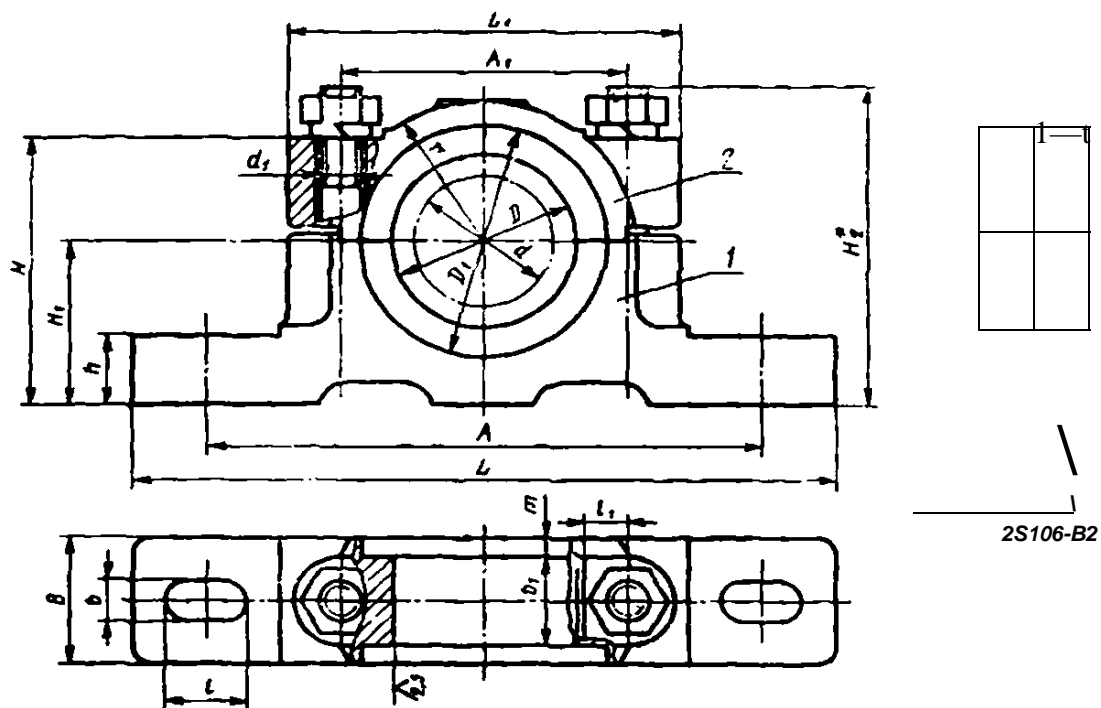
11611—82.

2.

. 1 2

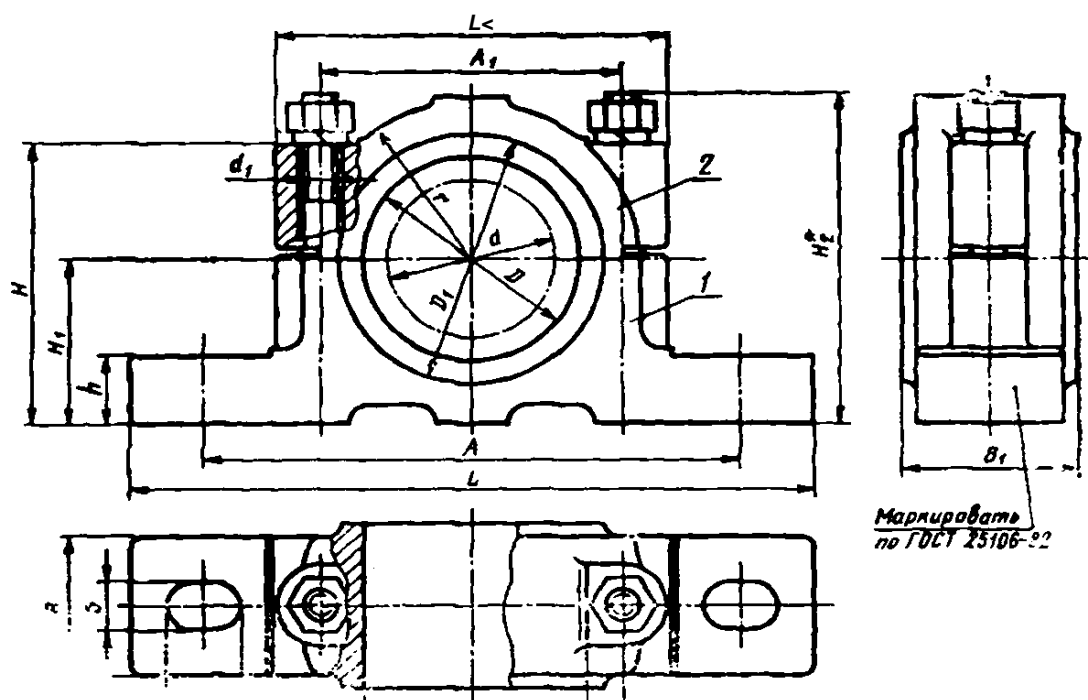
.

. 1994 .

Для $d=25\div 56$ мм

2S106-B2

1 — ; 2 —
 .1
 /—634-160



Маркировка
 по ГОСТ 25106-92

1 — ; 2 —
 .2

*

	5^3	$(\frac{1}{8})$	D_t		L	Li		
25X25	25	32	43	120	60	155	80	50
28X25	28	36	48					
25X32	25	32	43					
28X32	28	36	48	135	70	170	95	70
32X32	32	40	52					
35X32	35	46	55					
40X40	40	50	63	150	80	185	105	80
45X40	45	55	68					
50X48	50	60	73	170	95	215	125	90
55X48	55	65	80					
63X60	63	78	92	220	25	280	160	120
70X60	70	85	05					
80X75	80	95	15	260	50	320	195	150
90X75	90	110	25					
100X100	100	120	40	300	70	380	220	160
110X100		130	50					
125 1	125	145	65	320	" "	400"	24 "	180
140X120	140	160	80	340		420	260	200
160X1401	106	185 L	110	160	1230	1440	180 !	225 1

UH

\cdot	«;	h		(\cdot , 9)		(no)	l	li	,	d_t	m
32	60	15	26	—	11	18	17	8	28	8	3,5
42	80	18	32	—	13	24	20	12	35		4,0
45	90	20	40	—		30			43		5,0
53	102	25	48	—	17	40	23		52	12	4,0
70	140	30	60	70	22	—	30	16	69	16	
85	170	35	75	85	26		34	20	85	20	
95	195	40	100	110		—		22	90	24	
106	210			140	32	—	40		105		
118	230	15	120						112		
132	260		"	180					130		

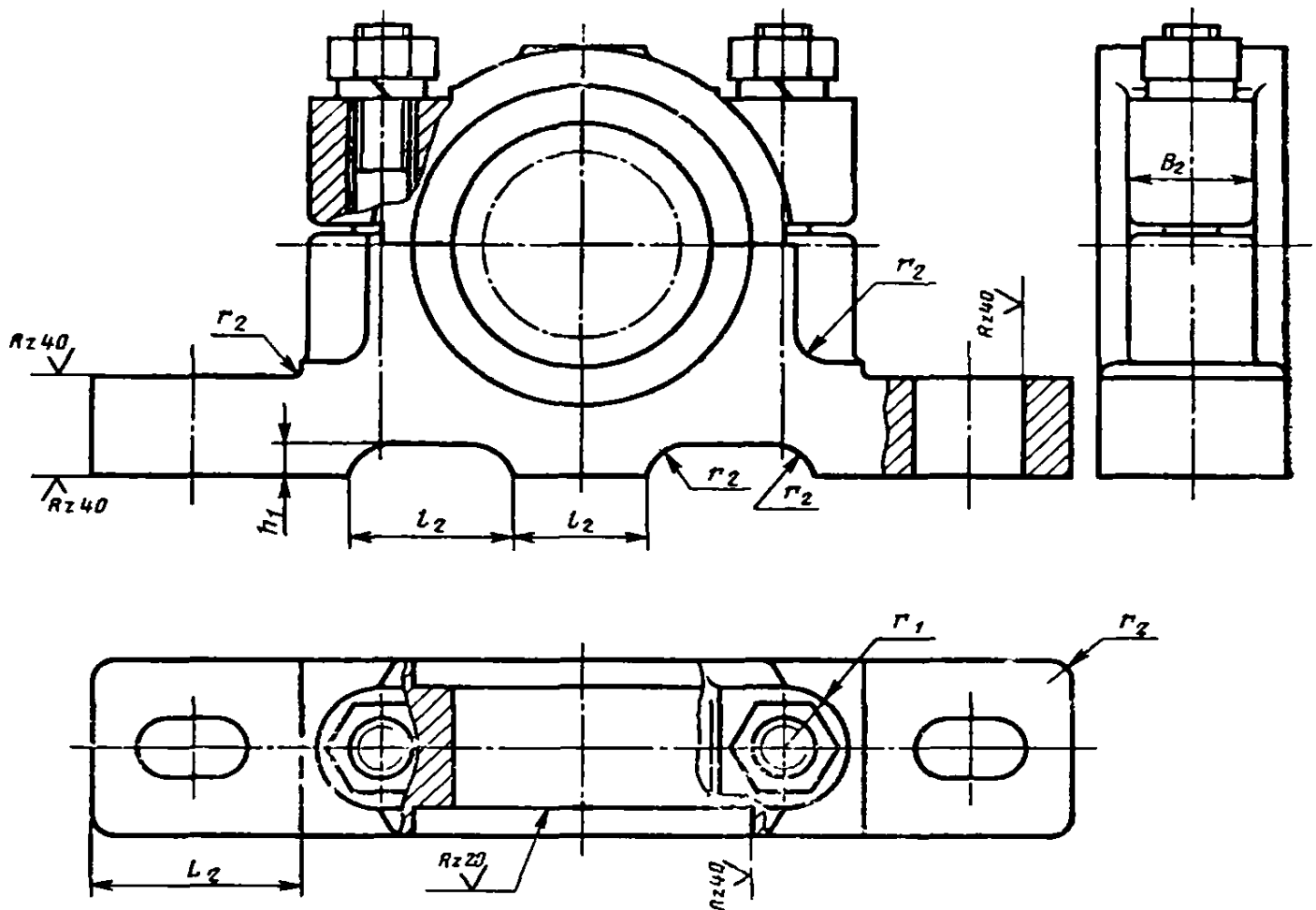
$$\begin{array}{l}
 d=70 \quad , \quad \dot{\quad} = 60 \\
 70X60 \quad 11607—82 \\
 d=70 \quad , \quad = 60 \\
 70X60—1 \quad 11607—82 \\
 70X60 —2 \quad 11607—82 \\
 \quad \quad \quad \quad \quad 25106—82.
 \end{array}$$

3.
4.

—

.

$$d=25-t*160$$



1. ;

$\wedge r_b \$$

$$, = (2,0-2^{\wedge})^{\wedge}; \text{£}, = \wedge^{\wedge} - (24-4); \wedge = (0,20-025)^{*};$$

$$/_2 = 0.25Li; | = 0,5 \quad 2.$$

2.

2

£j:

$$\begin{aligned} & 2=3 \quad Li < 80, \\ & 2=5 \quad \text{£}! = (95-125), \\ & fj > 10 \quad L_x = (150-220), \\ & 2=20 \quad \text{£}1 > 240. \end{aligned}$$

3.

$$278\$-73,$$

$$, /?z < 630$$