

11609—82

Plain bearings split angle bearing blocks
with two bolt holes. Design and dimensions.

11609—65

417210

26 -

1982 . 274

01.07.83

1.

11611—82.

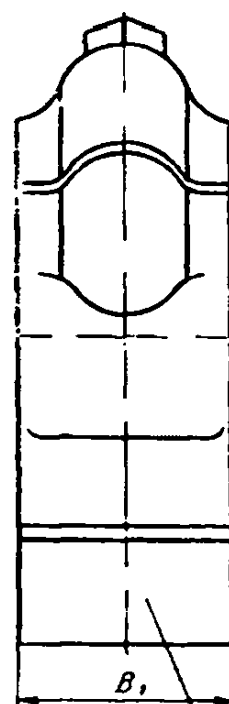
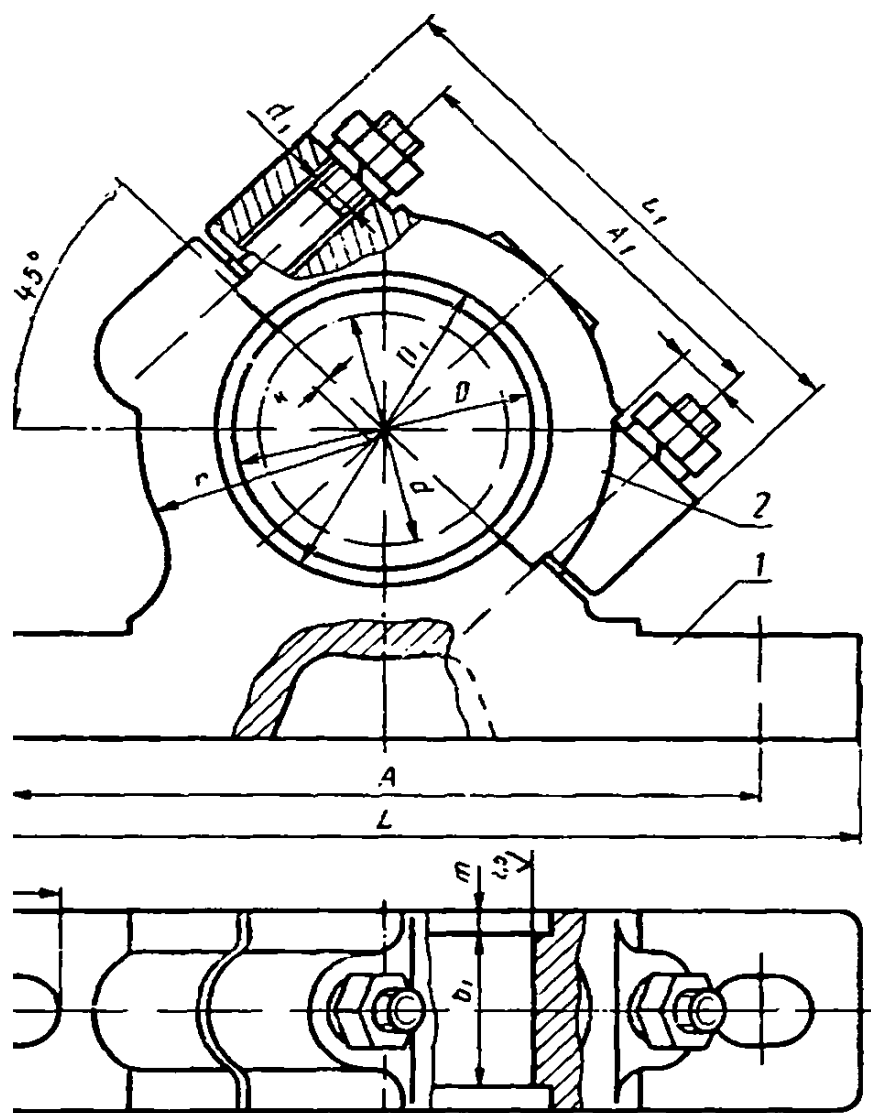
2.

,

.

»

. 1994 .



Маркировать
по ГОСТ 25106 82

1— ; 2—

! b	t .	<i>o</i> (<i>o</i>, 00 HS)	Di			<i>L</i>	Li	,
25	25	32	43	120	60	155	80	50
28	28	36	48					
32	32	40	52	135	70	170	95	60
36	35	45	55					
40	40	50	63	150	80	185	105	63
45	45	55	68					
50	50	60	73	170	95	215	125	75
55	55	65	80					
63	63	78	90	220	125	280	160	95
70	70	85	105					
80	80	95	115	260	150	320	195	112
90	90		130					
100	100	120	140	300	170	380	220	125
	110	130	150					
125	125	145	165	320	190	400	240	132
140	140	160	180	340	90	420	260	140
160	160	185	210	360	230	440	280	150

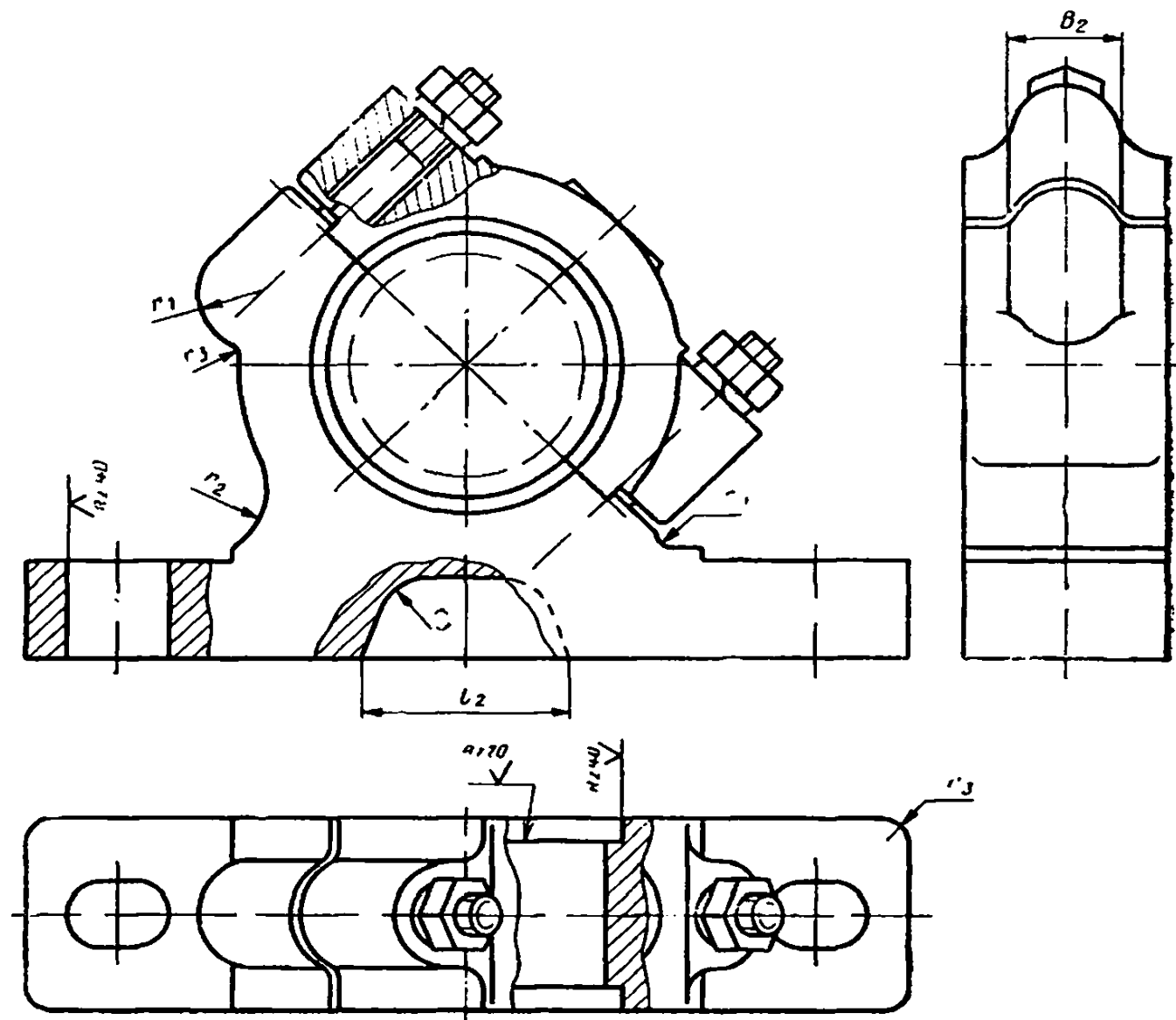
		([·] , no [·])		(¹ - no [·])	1	*		,		m
15	25	—	II	18	17	8	28	8	3	3,5
18	32	—		24			35			4,0
20	40	—	13	30	20	12	43			5,0
25	48	—	17	40	23		52	12		4,0
30	60	70	22	—	30	16	69	16	5	
35	75	85	26		34	20	85	20		—
40	100			—			90			
—	110	140	32	—	40	22	105	24	8	
45	120						112			
	140	180		—			130			

$$\begin{array}{rcl}
 & & \vdots \\
 d=70 & : & \\
 70 & & 11609—82 \\
 & d=70 & : \\
 70—1 & & 11609—82 \\
 70—2 & & 11609—82 \\
 — & & 25106—82.
 \end{array}$$

3.
4.

—

.



- L
- $z_2 = (2,0-2,5)di$; $Z_2 = (0,94-1,2)$; $= 0,5$; $z_2 = (0,74-0,9)$.
2. L/t
- $z_3 = 3$; $Li < 80$;
- $= 5$; $L_j = (954-125)$,
- $/ > = * 10$; $L_x = (1504-220)$,
- $/ = 20$; $\text{£} > 240$.
3. $2789-73$,
- $, / ? z < 630$.