

11641—73

1-96

1

11641—73* *

End caps with groove for seal ring.
Design and dimensions

11641—65

27.03.73 690.

01.01.75

27.07.92 782

1.

,

-

,

-

.

,

(

-

)

(

),

(

,

-

-

.).

(

,

.

2).

*

(1997 .)

/, 2,

1980 ,, 1992 . (9—80, 10—92)

©

, 1973

©

, 1997

2. : 1 —

; 2—

3.

□ □

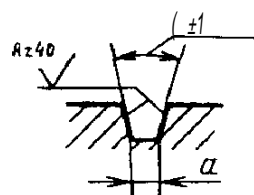
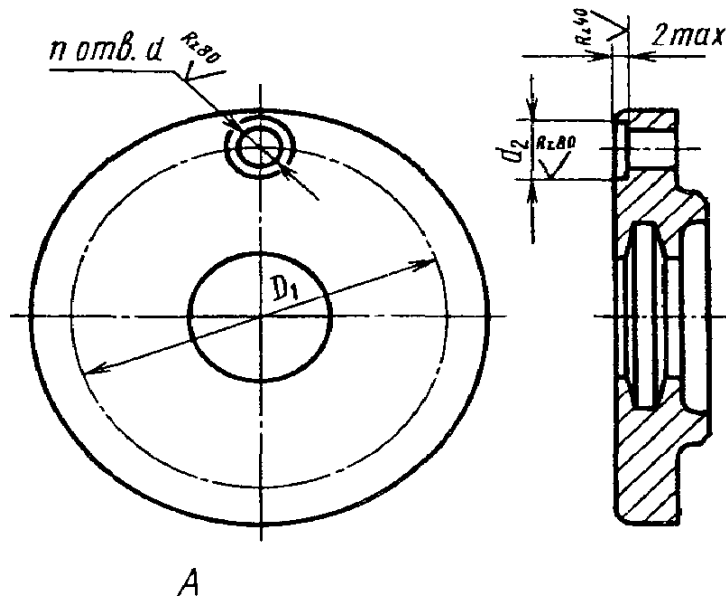
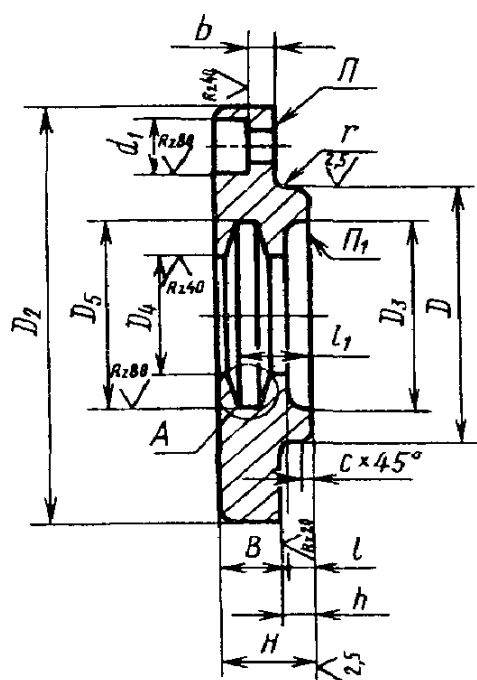
1.

2.

/ N 7

1

2



(
4. , 1, 2).
— 18514—73.

1.

D !			,	\cdot H12	$\{$		*	1	$1,$	I					\wedge :								
13	22	34	9	<div><div>458</div><div>569</div><div>7812</div></div>	4,8	8	10)	9)	1,5	6,0	7,5	2	0,6	0,3	0,02						
15	25	36	11	<div>569</div>													1,5	0,03					
				<div>6710</div>													2,0						
				<div>1913</div>													1,5						
<div>458</div>				2,0													2,0						
<div>569</div>				1,3																			
<div>7812</div>				4,3																			
<div>569</div>				2,0																			
<div>6710</div>				2,0																			
<div>7812</div>				1,5																			
<div>91014</div>				2,0																			
17				28															40	14	<div>569</div>	7,0	0,04
																					<div>6710</div>		
	<div>7812</div>																						
	<div>8913</div>																						
	<div>101119</div>																						

D d_{11}	D_1	D_2	D_3	Диаметр вала или штулки	D_4 D_{12}	D_5	d	d_1	d_2	n	H^*	h	l	l_1	B	a	b	c	r	Масса крыш- ки, кг з
20	28	40	14	7	8	12	4,8	8	10	3	9	3	2,0	6,0	7,0	2,0	2	0,6	0,3	0,04
				9	10	14														
22	32	45	16	6	7	10										1,5				0,07
				7	8	12														
				8	9	13														
				10	11	19														
				12	13	21														
24				7	8	12	5,8	10	12	3	12	4	2,0	9,0	10,0	2,0	3	0,6	0,3	
				8	9	13														
				9	10	14														
				10	11	19														
				12	13	21														
26	36	50	18	7	8	12														0,08
				8	9	13														
				9	10	14														
				10	11	19														
				12	13	21														
26				15	16	24														
				8	9	13														
				9	10	14														
26				10	11	19														
				12	13	21														
				15	16	24														

D d_{11}	D_1	D_2	D_3	Диаметр вала или штулки	D_4 d_{12}	D_5	d	d_1	d_2	n	H^*	h	l	l_1	B	a	h	c	r	Масса крыш- ки, кг \approx
28	42	55	24	10	11	19								9,0		2,0				0,10
				12	13	21														
				15	16	24														
				17	18	28										3,0				
30	42	55	24	8	9	13										2,0				
				10	11	19														
				15	16	24														
				17	18	28										3,0				
32	42	55	24	10	11	19	5,8	10	12	3	12	4	3,0		9,0		3	0,6	0,3	0,10
				12	13	21										2,0				
				15	16	24														
				17	18	28										3,0				
35	48	65	28	9	10	14														0,17
				10	11	19										2,0				
				15	16	24														
				17	18	28										3,0				
				20	21	31														

<div>1) till</div>	<div>D.</div>	<div>,</div>	<div>-</div>	<div>,</div>	<div>(l</div>	<div>i</div>	<div>it</div>	<div>IP</div>	<div>lt</div>	<div>1</div>	<div>1</div>	<div>a</div>	<div>6</div>	<div>c</div>	<div>r</div>	<div>-</div>		
37	UJ	JS	<div><div>101110</div><div>121321</div><div>17182,5</div><div>202131</div></div>	J,O	10	12	1	12	4	3,0	Q\	9,9	<div><div>2,0</div><div>3,0</div></div>	J	0,6	0,3	0,18	
40	54	70	34	<div><div>151024</div><div>171825</div><div>202131</div><div>2635</div><div>121321</div><div>151624</div><div>202131</div><div>2635</div></div>	7	12	14	4	15	s	<div><div>8,0</div><div>7,0</div><div>6,0</div><div>5,0</div><div>7,0</div><div>6,ii</div></div>	12,5	<div><div>7,0</div><div>8,0</div><div>5,0</div><div>7,0</div><div>8,0</div><div>5,0</div></div>	<div><div>2,0</div><div>3,0</div><div>4,0</div><div>2,0</div><div>3,0</div><div>0,0</div></div>	4	0,6	0,6	0,23
44	60	78	38	<div><div>171825</div><div>202131</div><div>303143</div><div>151624</div><div>171825</div></div>							<div><div>7,0</div><div>6,0</div><div>8,0</div><div>7,0</div></div>	<div><div>8,0</div><div>9,0</div><div>7,0</div><div>8,0</div></div>	<div><div>3,0</div><div>4,0</div><div>2,0</div></div>	1,0		0,27		
45																		
47																		
				</														

D d_{H1}	D_1	D_2	D_3	Диаметр вала или штулки	D_4 H_{12}	D_5	d	d_1	d_2	n	H^*	h	l	l_1	B	a	b	c	r	Масса крыш- ки, кг ≈						
47	60	78	38	20	21	31	7	12	14	4	15	5	12,5	4	7,0	8,0	3,0	1,0	0,6	0,27						
				25	26	38									6,0	9,0	4,0									
				30	31	43																				
50	66	82	44	30	31	43									6,0	9,0	4,0	7,0	8,0	3,0	1,0	0,6	0,31			
				17	18	28																				
20				21	31																					
25				26	38																					
30				31	43																					
35				36	48																					
55	75	95	48	25	26	38									6,0	9,0	4,0	1,0	0,6	0,33						
				30	31	43																				
				35	36	48																				
				40	41	53																				
58	78		52	45	46	58									25	26	38	30	31	43	35	36	48	1,0	0,6	0,44
25				26	38																					
30				31	43																					
60	78		52	35	36	48									25	26	38	30	31	43	35	36	48	1,0	0,6	0,44

D d_{11}	D_1	D_2	D_3	Ди- метр вала или штулки	D_4 H_{12}	D_5	d	d_1	d_2	n	H^*	h	l	l_1	B	a	b	c	r	Масса крыш- ки, кг *
70				50	51	67							7,0		11,0	5,0				
				20	21	31							9,0		9,0	3,0				
				25	26	38														
				30	31	43														
72			62	35	36	48							8,0		10,0	4,0				
	90	110		40	41	53				4										0,64
				45	46	58														
				50	51	67														
				55	56	72	9	15	20		18	6	7,0	15,0	11,0	5,0	4,0	1,0	0,6	
				35	36	48							8,0		10,0	4,0				
75			64	45	46	58														
				55	56	72							7,0		11,0	5,0				
				25	26	38														
				30	31	43														
80	100	120	72	35	36	48				6			8,0		10,0	4,0				0,74
				40	41	53														
				45	46	58														

,

1) dll	j,	i	II	-			11	4		/	h	1	7,	1		h			- s								
so	100	120	11	50	51,	67_	9	15	20	6	18	6	7,		11,0	5,0	4,0	1,0	0,6	0,74							
				55	56	11																					
				60		11																					
IK HS	100	120	11	35	,36	48							8,0		10,0	4,0				7,0		11,0	5,0		1,0	0,6	0,81
				40	41	53																					
				45	46	58																					
				50	51	67																					
				55	56	11																					
				60	61,5	11																					
on	110/ 130	00	00	30	31	43							8,0		10,0	4,0	4			7,0		11,0	5,0		1,0	0,6	0,01
				35	36	48																					
				40	41	53																					
				45	46	58																					
				50	51	67																					
				55	56	72																					
				60	61,5	77																					
				65	66,5	82																					

116-41—73 . 1

*

,

1

D dll		,		-	812	,	i	4		*	h	1		S		t		-
																		21
55		130	80	40	41	53	9	15	20		18	ti	8,0	10,0	4,0.	4	1,0	
				50	51	67												
				60	61,5	77							11,0	5,0				
				70	71,5	89							12,0	6,0				
100	120	145	50	35	36	48	11	18	24	6	23	8	14,0	»	4,0	5	1,0	0,0
				40	41	53												
				45	46	58												
				50	51	67												
				55	56	72							13,0	10,0	5,0			
				65	66,5	82												
				70	71,5	89							20,5	11,0	6,0			
				75	76,5	94							12,0	14,0	4,0			
105	130	155	95	45	46	58							14,0	0,0	4,0			1,50
				55	56	72				13,0	10,0	5,0						
				70	71,5	89												
				75	76,5	94				12,0	11,0	6,0						
				80	81,5	99												

91

y

dll				-	»,			1	//	ft	1		s	ft		,
130	155	95	40	41	53	11	18	24	6	23	8	20,5	14,0	9,0	4,0	1,50
			45	46	58								13,0	10,0	5,0	
			50	51	67											
			55	56	72											
			60	60	77											
			70	71,5	89								12,0	6,0	5	
			75	76,5	94											
			80	81,5	99											
			85	«6,6	104											
115	165	105	65	66,5	82	11	18	24	6	23	8	20,5	13,0	10,0	5,0	1,70
			75	76,5	94								12,0	11,0	6,0	
			80	10	99											
			85	86,5	104											
			45	46	58								14,0	9,0	4,0	
			50	51	67								13,0	10,0	5,0	
			55	56	71											
			60	61,5	77											

D Д11	D_1	D_2	D_3	Ди- метр вала или булки	D_4 Д12	D_5	d	d_1	d_2	n	H^*	h	l	l_1	B	a	b	c	r	Масса крыш- ки, кг \approx			
120	140	165	105	65	66,5	82	11	18	24	6	23	8	12,0	20,5	11,0	6,0	5	1,6	0,6	1,70			
				75	76,5	94																	
				80	81,5	99																	
				85	86,5	104																	
				90	92	111																	
125	150	175	115	55	56	72							11,0	19,5	12,0	7,0					5,0	1,90	
				70	71,5	89																	
				80	81,5	99										10,0					13,0		6,0
				85	86,5	104																	
				90	92	111										9,0					14,0		7,0
				100	102	125							8,0		15,0	8,0							
				50	51	67							11,0		12,0	5,0							
				55	56	72																	
				60	61,5	77																	
				65	66,5	82																	
				70	71,5	89																	
				130											75	76,5					94		10,0

W
wjpi
01

27

*

;

1,90

7,0

1,90

135

12.0 5.0

13,0 6.0

1

8,0 15,0 8,0

19,5

1,6 0,6

12,0 5,0

2,40 7

13,0 6,0

I - ez.—ir-911

9,0 7,0

97

D d_{11}	D_1	D_2	D_3	Ди- метр вала или штулки	D_4 Н12	D_5	d	d_1	d_2	n	H^*	h	l	l_1	B	a	b	c	r	Масса крыш- ки, кг *
140	160	185	125	100	102	125	11	18	24		23	8	8,0		15,0	8,0	5		0,6	2,40
				110	112	135														
145	170	195	130	75	76,5	94							10,0		13,0	6,0				
				95	97	116							9,0	19,5	14,0	7,0				
				105	107	130														
				110	112	135							8,0		15,0	8,0				
				120	122	145														
150	180	210	135	60	61,5	77	13	20	26	6	28	10	15,0		13,0	5,0	6	1,6	0,8	3,60
				70	71,5	89														
				75	76,5	94							14,0		14,0	6,0				
				80	81,5	99														
				85	86,5	104								24,0						
				90	92	111							13,0		15,0	7,0				
				95	97	116														
				100	102	125														
				105	107	130							12,0		16,0	8,0				
				110	112	135														

Размеры, мм

$\frac{D}{d11}$	D_1	D_2	D_3	Диаметр вала или штулки	$\frac{D_4}{H12}$	D_5	d	d_1	d_2	n	H^*	h	l	l_1	B	a	b	c	r	Масса крыш- ки, кг \approx					
150	180	210	135	120	122	145	13	20	26	6	28	10	12,0	24,0	16,0	8,0	6	1,6	0,8	3,60					
155				70	71,5	89							14,0		14,0	6,0									
				90	92	111							13,0		15,0	7,0									
				110	112	135							12,0		16,0	8,0									
				120	122	145																			
160	190	220	145	65	66,5	82							15,0		13,0	5,0				3,90					
				75	76,5	94							14,0		14,0	6,0									
				80	81,5	99																			
				90	92	111							13,0		15,0	7,0									
				95	97	116																			
				105	107	130							12,0		16,0	8,0									
				110	112	135																			
160	190	220	145	120	122	145							12,0		16,0	8,0	6			3,90					
165				100	102	125																			
				120	122	145																			
				130	132	159							11,0		17,0	9,0									
170	200	230	155	70	71,5	89							14,0		14,0	6,0				4,10					

	1112	J,
80	ms	99
85	ms	104
95	97	116
100	102	125
230 155 105	1117	130
	112	135
120	122	145
130	132	159
175 125	127	154
	70	71, S 89
	75	76,5 94
	85	86,5 104
210 240 90	32	111
	100	102 125
	112	135
	120	122 145
	130	132 159

13 20 26 28 10 24,0 17,0 9,0 6,0 1,6

14,0 6,0

13,0 15,0 7,0

4,10

12,0 16,0

17,0 9,0

14,0 6,0

13,0 15,0 7,0

12,0 16,0 8,0

17,0 9,0

£ I

£-1 911

1) (III)		1	0,	-	1		il	ff>	i	lt	//*	1	1	i	1	s	*	C	t	■ , s	
ISO	210	240	160	11	142	173									10,0	18,0					4,60
WLA 190	225	i;)	175	75		94									14,0	14,0	6,0				
				S0	81,5	99															
				90	92	111															
				95		116															
				105	107	130															
					112	135															
				190 200	225	LJJ									115	120	122				
130	132	159																			
	142	173																			
150	152	183																			
80	81,5	99																			
95	91	116																			
100	102	125																			
	112	135																			
120	122	145																			
130	132	159																			
			11,0				17,0	9,0													

l) dIII	.	0,	0,	0,	0,	i	4	4	n	E*	h	l	1	1	a	b	C	t	.
200	225	211	175	140	142	173						10,0		18,0	10,0				5,20
				1	162	193													
				85	86,5	104						14,0		14,0	6,0				
				100	102	125													
				105	107	130						12,0		16,0	8,0				
				120	122	145													
				130	132	159						11,0		17,0	9,0				
				140	142	173													
				150	152	183						10,0	24,0	18,0	10,0				
				160	162	193	13	20	26	6	23	10				6	1,6	0,8	
210	235	265	190																5,80
				90		111						13,0		15,0	7,0				
				100	102	125													
					112	135						12,0		16,0	8,0				
				120	122	145													
				140	142	173													
				150	152	183						10,0		18,0	10,0				
				170	172	203													
				130	132	159						11,0		17,0	9,0				
				i	162	193						11,0		18,0	1(1(1				
				170	172	203													
215	250	280	211(1																6,80
220																			

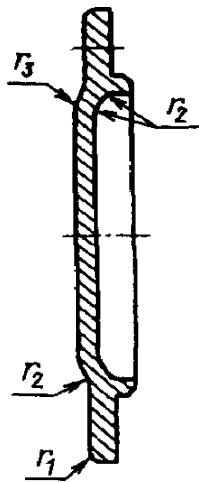
(11)	D,			HII	1,	t/							1						
215	265	300	208	90	52	111	17	28	32	6	35	12	18,0	30,0	17,0	7,0	7,0	1,6	0,8
					97	116													
				105	117	130													
					112	135													
				120	122	145													
				130	132	155													
					2	173													
				150	152	183													
				160	162	193													
				100	102	125													
					112	135													
				130	132	159													
				150	152	183													
				160	162	193													
230				170	172	203	17	28	32	6	35	12	17,0	30,0	16,0	18,0	7,0	1,6	0,8
				180	182	213													
240	280	315	220		57	116	17	28	32	6	35	12	18,0	30,0	17,0	18,0	7,0	1,6	0,8
				100	102	125													
					112	135													
				120	122	145													

D d_{11}	D_1	D_2	D_3	Диаметр вала или штулки	D_4 H_{12}	D_5	d	d_1	d_2	n	H^*	h	l	l_1	B	a	b	c	r	Масса крыш- ки, кг \approx								
240	280	315	220	130	132	159	17	28	32	6	35	12	16,0	30,0	19,0	9,0	7,0	1,6	0,8	9,60								
				160	162	193							15,0		20,0	10,0												
				180	182	213							17,0		18,0	8,0												
250				100	102	125																						
				110	112	135																						
				120	122	145							15,0		20,0	10,0												
				140	142	173																						
				150	152	183																						
				160	162	193																						
				180	182	213																						
				200	202	240							14,0		21,0	11,0												

*

I **D-65** , 36 :

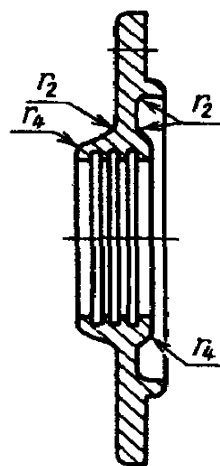
18511-73



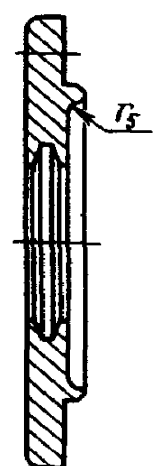
18512-73



18513-73



11641—73



D	.		.		r
13—20	2	2	5	2,5	—
21—37	2	2	6	3,0	2
40—62		2	8	4,0	2
65—95	2	4	10	5,0	2
100—145		5	12	5,5	3
150—220	4	6	14	6,5	3
225—310	4	6	16	8,0	4

*

2(, . JMs 2)

$$JL$$

021007 10.08.95. 16.04.97. 19.06.97.
 . . . 1,40. - . . 1,23. 164 . 608. . 856.
 , 107076, , .. 14.
 , . . 256.
 040138