



**50**

**12135—75**

50

12135-75\* \*

The plates of spike fastening for  
railway P50 rails. Design and dimensions

12135—66

18 1975 , N? 1574

01.01 1976 .

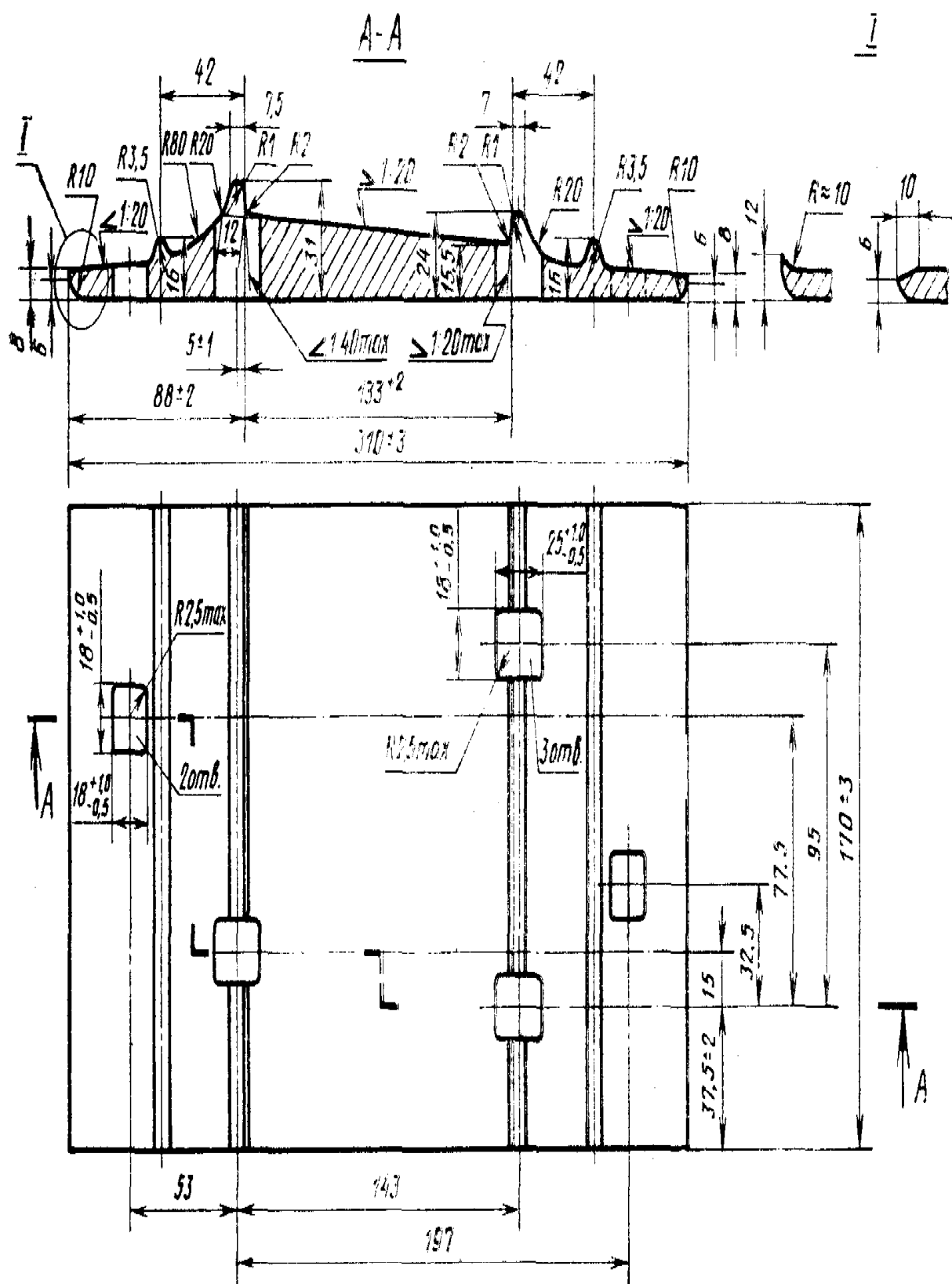
01.01 1983 .

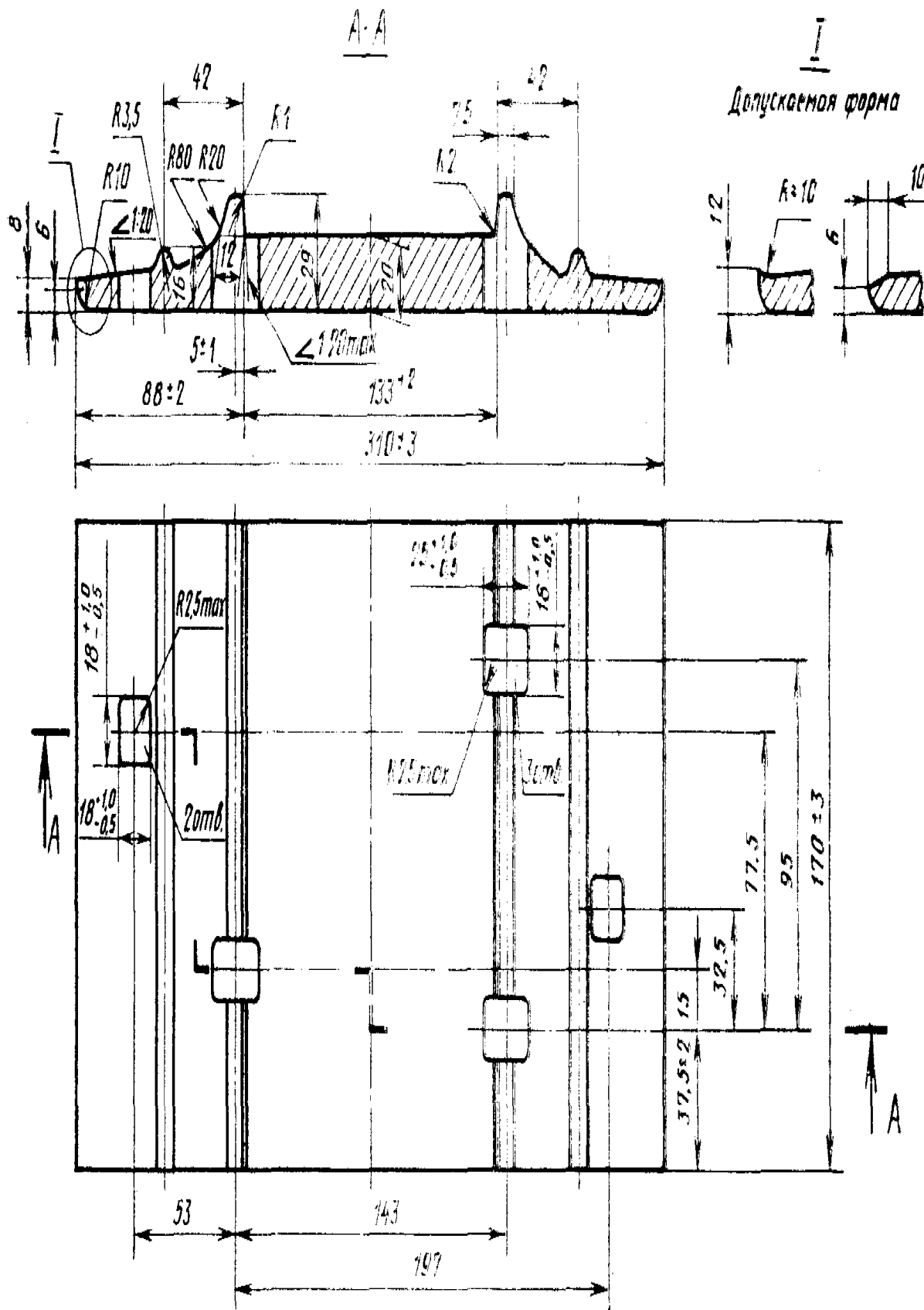
1									50
50									
50,									
2,			50						-
3.									-
						50			
						50 —		2.	

( 1981 . ) 1976 . 1980 . ( 1> 1, 2, 11—76 11—80).

©

, 1982





Стp. 4

IIIJWi

50:

*Mmka FOCI 1 -?5*

To , 50:

CP *FOCI*/12135-75

( , . 1,2).

4. - 3280-72.

5. -

6. , -

2-6 .

7.

$\pm 1$  , -

+0,5 .

8 ,

, -

, -

$\pm 1$  .

6-8 ( , )

11 - Op, 5

		1	
50 50	48,35 50,80	37,55 35,88	6,2 6,0

7,85.

( , . !, 2).