

13958-74\*

Nuts for fastening tube connections on external cone.  
Construction and dimensions

13958—68

1974 . 2124

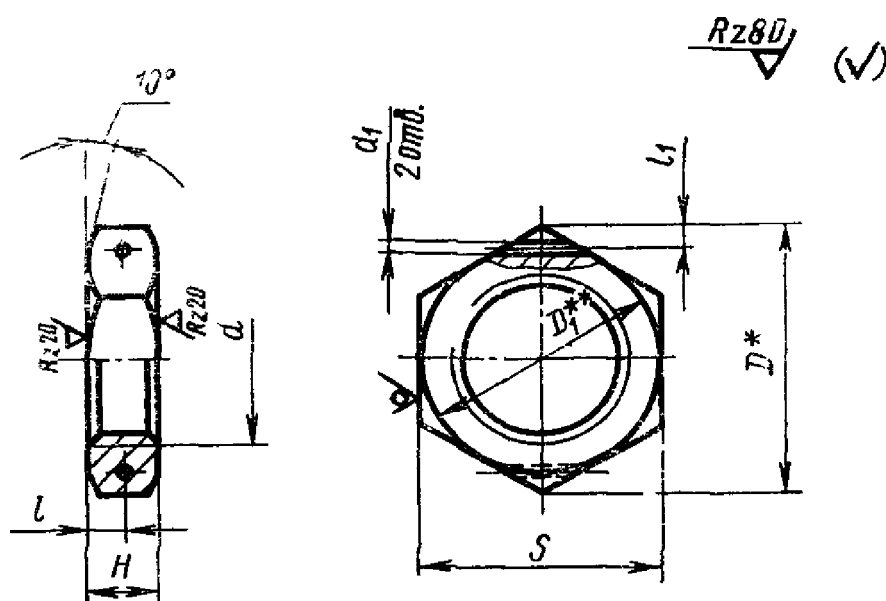
01.07.75

1985 .

\*\*

1.

&gt; -



\*

\*\* /&gt;, «£.

( 1988 .)

1980 ,

1986 . (

1, 2,

3-81, 5-86).

8 00 X	1 00 X 1	1 X to	2 . X 1 ©	5 to X to	3 ( X * # ©	S X to	3 8 X →	3 © X * .	3 © X to	8 X —	8 X * ©	^3 X 1 cn	X w-k	3 N3 X 1	3 to X ©	3 00 X	3 © X w-b	3 © X +	3 4b X ©	3 - X _*	3 X ©	3 to X	3 A X	3 © X	3 W-4 X 1	1 X	1 X ©			
																													-	
.to											W ©														t— "to		1 + *2 ^ g£r>2"			
05 ~4 00		©				-4 Vi		© 04		4* 1 U I ©		© © ©	© "©	© to	to 4 V]		to © V		to ©	© ©	© +		© to							
05								4 ©		4* — ©		© to	8	to -	to 4		to to		©	t—* -4						CO				
© "	*										© 4#		4* "©		4*			© "©				© ©	to ©	3 a						
t ©																								<+ to		03 *				
to "©											to ©														k—* w ©		33 ^ *2			
l * to		*-1										©	©	©			*o				©	©	£							
© "											* © "to ©														4*t ?! >		:			
4* >	4* l—	8	*	"		"to	to Vj	to 00	<4 * 4*	to © ©	4* to 4-	» ^3 »		* ©	< 8	S* © ©	to © ©	to © ©	© © ©	© 4b ©	© 04 ©	"to 4*	[	© 4	1	1	- -		£ T s	
1—* "Vo	*.*	© 8	V to	© "	© 4	00 © ^	•4J © ©	* 8	© 4 ©	00 ©	© 8	© 4	to 8	to to	> © ©	* 8	V to	< 4b ©	« * — * ©	© © ©	© 4	"© 4		© 4		© © ©	"		s	

\*0  
W  
£  
“  
£  
:  
£

20 1.5

:

20 1.5—31 13958—74

45:

20 15—22 13958—74

14 17 2:

20 5—12 13958—74

13 11 2 2 :

M20XL5—UA 13958—74

:

M20XL5—31 13958—74

20 1.5—22 13958—74

M20XL5—12 13958—74

M20X1.5—U 13958—74

( , . 1, 2).

2.

— 0,08 .

( , . 2).

3.

13977—74.

4.

— 13977—74.