

,

1 - () - -
,
2 (6—94 21 1994 .) ,
:

3 , 25 1995 . 632
15620—93
1 1996 .
4 15620-77

© , 1996

, -

2

4

1—3,

■

23360;

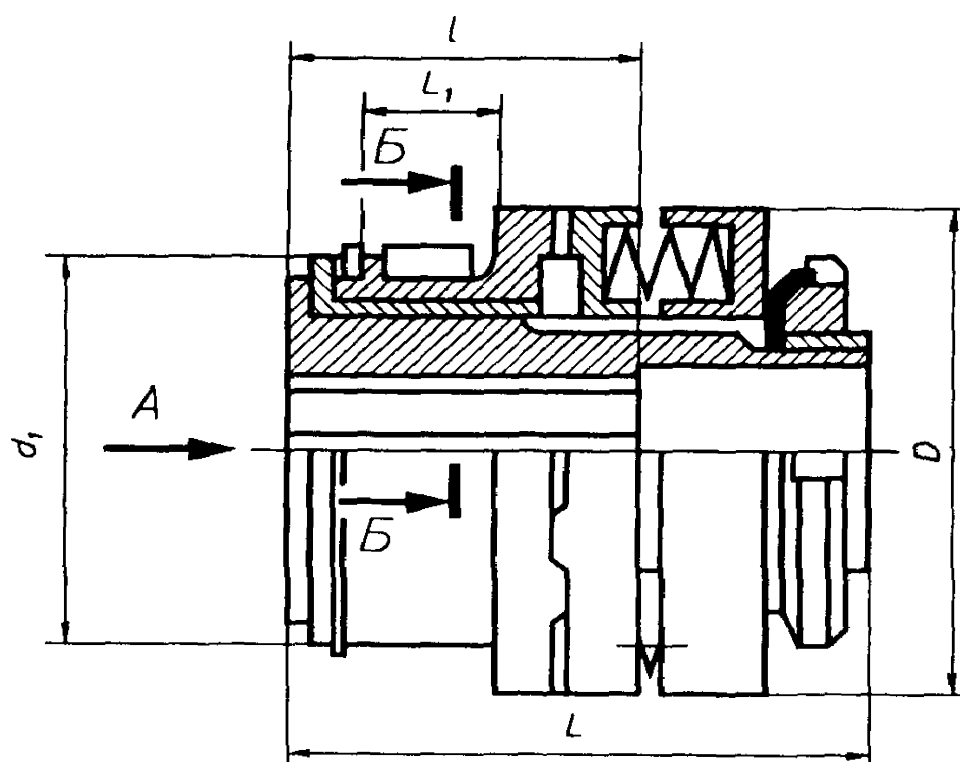
,

—

6033;

1

1.

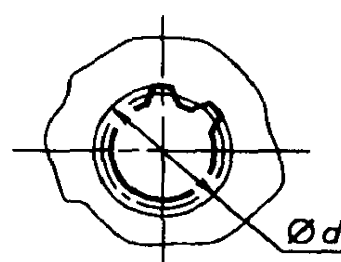
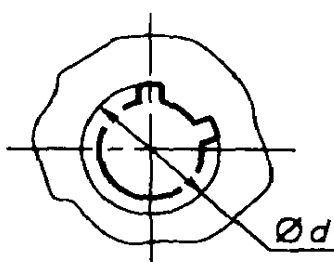
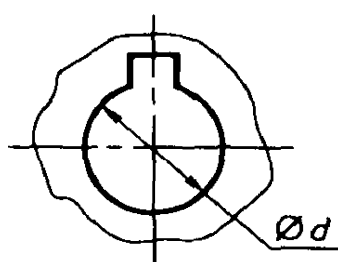


А

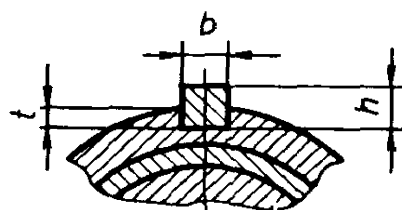
Исполнение 1

Исполнение 2

Исполнение 3



Б-Б



1

	rf 7				*	4		1 4		k	(» , 23360)	till / HI2	- , 1													
	1		2	3				1	2 3																	
	pul	2																								
4,0	8	-	*	-	32	36	63	20	**	12	3	3	1,0	27	0,31											
		-	-	-				23	-																	
	10	-	-	-				20	-																	
0,3	0	-	-	-	38	48	63	20	-	14	4	4	2,5	21	0,48											
	10	-	-	-				23	-																	
		-	-	-																						
10,0	12	-	-	12	48	56	75	30	25	18	5	5	3,0	17	0,83											
	14	-	14				80									40	28									
16,0	12	-	-	12														56	71	85	30	25	21	6	6	3,5
	14	-	14	14				105	40																	
	16	-		15																						
	14	-	14	14																						
25,0	16	-	10	15	56	71	85	40	28	21	6	6	3,5	13	1,55											
	18	-	-	1?																						
	-	19	-	-																						
40,0	18	-	-	17			105			24					1,74											

!

	7				4	D,	L	1 4		(23360)	111!	/ H12	?*, i, m, u, w,	
	1		2	3				1	2 3						
	1	2													
40,0	-	19	-	-	56	11	105	40	28	24	6	6	3,5	13	1,4
	20	-	20	20				50	36						
	22	-	22	22											
63,0	20	-	20	20	65	85		50	36	28	8	1	4,0	10	2,42
	22		22	22											
	-	24	-	-				60	42						
	25	-	25	25											
100,0	-	24	-	-	80	100	140	50	36	32	10	8	5,0	8	4,05
	25	-	25	25				60	42						
	28	-	28	28				80	58						
	-	30	-	30				60	42						
160,0	28	-	28	28	125	160		60	42	36	12	1	9,10	1	9,10
	-	30	-	30				80	58						
	32	-	32	32											
250,0	36	-	-	35	90	140	180			42	12	1	9,10	1	9,10
	-	38	38	38											
	40	-	-	40					82						

№	7				4			/			» (23360)	fi hll	i 12	. . - . - . , 11	9
	1		2	3				1	2 3						
	1	2													
400,0	—	38	38	38	105		190	80	58	4\$	14	9	5,5	5	15,50
	40	-	-	40				110	82						
	-	42	42	42											
	45	—	-	45											
	—	4\$	48	-											

15620-93

3.

63 , 25 , 1,
 3:
 63-25- 15620-93
 , 2 = 25 :
 63—6x21x25x5— 15620- 93
 , 3
 d= 25 , = 1,5 :
 63-25x1,5- 15620— 93
 —
 1139 .

()

1139

2

<i>D</i>	1139	
	<i>Z*d*D</i>	
14	6x11x14	3,0
16	6x13x16	3,5
20	6x16x20	4,0
22	6x18x22	5,0
25	6x21 25	5,0
28	6x23x28	6,0
32	6x26x32	6,0
38	8x32x38	6,0
42	8x36x42	7,0
48	8x42x48	8,0

-

-

,	,
1139-80 6033-80 15150-69 23360-78	1; 3; 1 1; 2

15620-93

621.833.006.354	21,060,60	15	41 7148
-----------------	-----------	----	---------

021007 10 08.95 23.02 96 06.05 96.
0,58. - 0.35. 200 3412. 209.
107076, , 14
— . "
, 6 "