

20197-74*

Screwed union elbows for rubber packer
for tube connections on external cone.
Construction and dimensions

10 1974 . 2174

01.07.75

1985 .

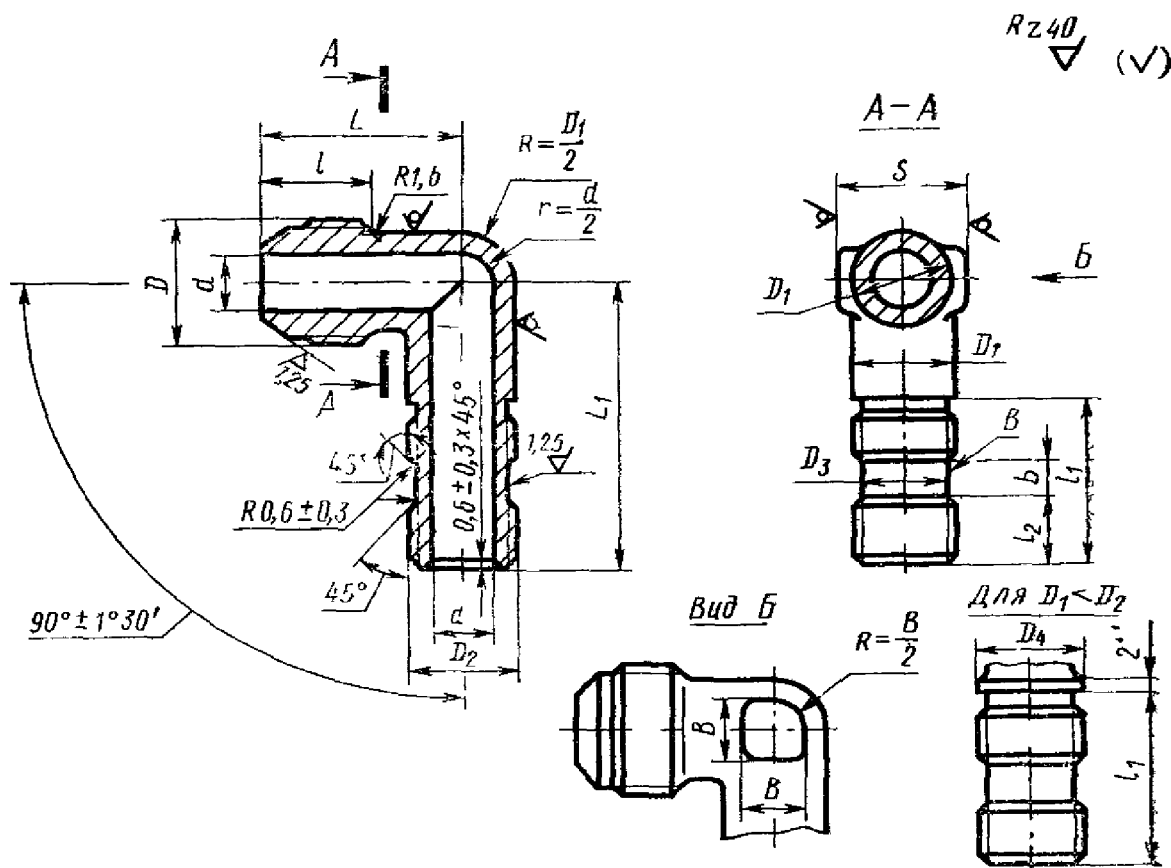
1.

2.

1

. 1

. 1.



Черт. 1

(1988 .)
1980 „

1, 2,
8 81, 5--8).

198	22	to	** 00	»*** >		** to		0»	Cl	4»			
												-	
	19,0			*_** W#	t-M	*	*« \ /		CO 4# ^4	to * <	•<1	,	
	X	X fci	S 53 X	Us X	I %	MSOXI,S	2 X	2 4 * X _*	2 * to X	2 M X	1 X	&	
	tO M	4	to to	*£	* 00		to	« *		00 §		0	
	i IM 1	3 ts X *01	X	i % *	X 0*	*_! O> X 1 *	2 *> X *	2 * to X « ft bi	2		2	*0	
	27,6	to 4^	>	>	t_' >	t-M >	*_** *	CO ^ a>	“		*4^	h1 , 0*?	
	00	to N	to 4*	to to	to	1						ik ^{tj}	
	to		to 4*	to to			--3	*_** 4^				05	
	to to	to _*	*_ 00					CO		to *	*	±0,3 *	
	oo	w		to		to	to		to »	to			
% J*				1+								F* >	
https://minable.ru/gosty													

			to ⁻			i ^{-*}						00			“-4			05			.		U [*]																																			
-						- "to																			.																																	
4“		V		25		&				— ¹		to ₅		to ₄ [*]		to		to		to _{CO}		.		f [*]																																		
8 ₄ [*]									1+																2																																	
•-2!		»		-vt		to ₅		< ¹		00		< ¹		4 ^{*)}				05 _t		25		-4		\$		05 ₄ [*]		4»-7 [*]		05		£		£		4 [*]		-		4 [*]		to ₅		4 [*]		8				.		t [*] "						
So ⁻		1+		-		-		4 [*]		to ₅		S ₄ ^{8*}																		-		"		.																								
to			00			^4			-*												05						to																															
9.901		4		00 _{to}		00 _{to}		00 ₄ [*]		0> ₄ [*]		05 ₄ [*]		* ₀₅				4 [*]		4 [*]		•		to _{to}		4 [*]		8		to ₀₅		00 ₀₅		8		-4		< ¹		V		t _£		fc _{***}		"00		"		1		1		1		-		100
to _{to} [*]		25,601		22,80		25,40		to _{to}		20,05		19,20		1 ₄ [*]		•		t ₀₅		» _{14,38}		to ₀₀		t ₀₀ [*]				00 ₀₅		-4 ₄ [*]		05 ₀₀		2\$		4> ₀₀ [*]		4»				to _{to}		-4 ₀₅		S ₀₅ [#]		to ₀₅		to ₄ [*]		to ₀₀		!		9 _V		
199				to _{to}		to _{to}		8		18,85		05 _S		4 [*] _{Vi}		•		to _{to}		to _{to}		t _{to} [*]		-vl _{to}		00 _{to}		05 _{\$}		8		4 [*] _V		4 [*] ₀₀		4» ₀₀		to ₈		3		to ₀₅		to ₈		to ₂₅		to _{to}		to _{to}		"00		*5		TJ _{fcj}		

*5 *
5 ft
ft 5
4)
S
ft S

25 22,0
28 25,0
30 27,0
32 28,0
34 30,0
36 32,0
38 34,0

D	,	D_2	$D,$	Dt	S	I	$/i$		
			$\pm^0 \gg^3_1$						
38 2	28	30 1.5	27,6	30	30	22	33	$\pm 0,4$	
39 2	34	1.5	30,6	–	36	23	35		
		1,5	33,6	36	41		24		
42 2	38	39 1.5	36,6	39		25			36
45 2									
	40	42 1.5	39,6	42					
48 2	43	45	42,6	45					
			(iH						

1—12—47—31

, 45:

1—12—47—22

, 12 18 9 :

1—12—47—13

, 13X11 2 2 :

1—12—47—

		<i>L</i>		in				100 „		
⌘ £		£ X	\$	⌘ « X				ic: s 3 * teΛ fci <		
13	±0,3	44	±0,4	66	±0,4	6	22	8,94	25,45	
14				79				9,96	28,40	
				91	±0,5			10,90	31,10	
		15		49	70		±0,4	28	12,00	
83					±0,5		12,94		36,90	
96							14,00		39,90	
70					±0,4		12,27		35,00	
83					±0,5		14,12		40,25	
							15,07		42, °0	
16		52		76	±0,4		30	17,85	50,80	
					±0,5			18,85	53,70	
				104				20,50	58,40	
				76	±0,4			18,63	53,10	
				90	±0,5			20,15	57,80	
				104				22,35	63,60	
		54		76	±0,4			24,83	70,80	
				90	±0,5			26,47	75,40	
				104				28,56	81,20	
		55		76	±0,4			26,75	76,20	
				90	±0 *5			29,04	82,80	
				104				31,67	90,30	

20197—74

20197—74

20197—74

20197—74

.6

;

1—12—47—41

;

1—12—47—31

1—12—47—22

1—12—47—13

1—12—47—11

1—12—47—41

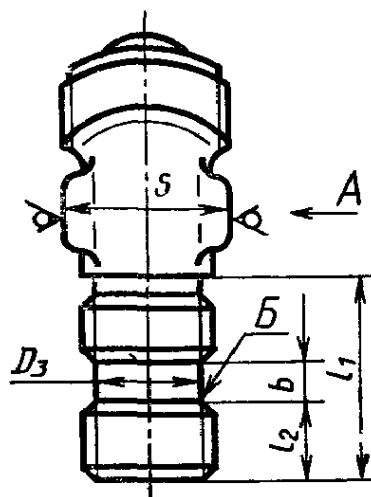
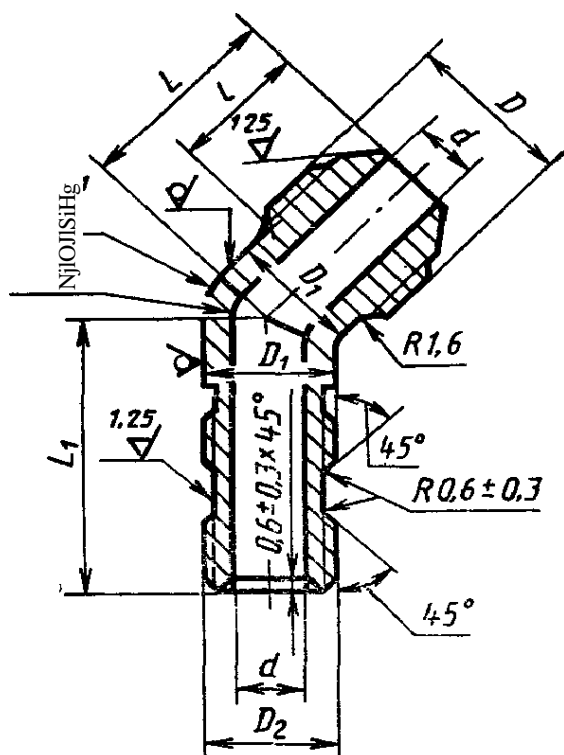
3.

2

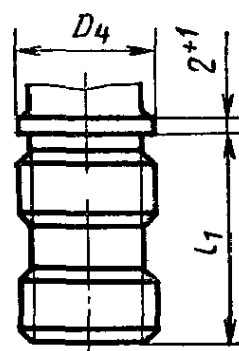
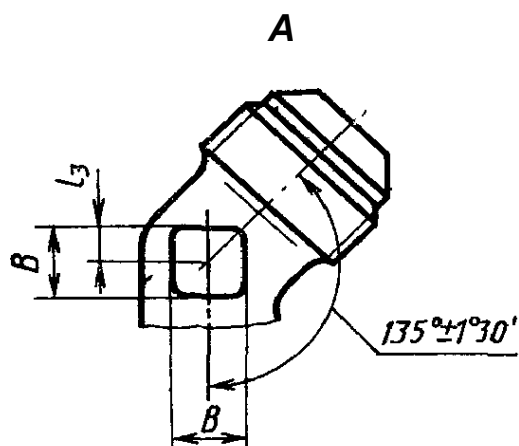
. 2

. 2.

RzkQ .
V' (✓)



Bt < Dz



Черт. 2

00		*	to		to	to		to	00	CD	4*-	to		00	05	to	CO		
																		-	
4	4#	8	to	to	to	to	—*	4»	4#	*				"		↳	4#	ft.	
g» X?		f» X to	£4* to X to	3 X to		5 X to		S X*	§ X-*	£to to X4»	£to to Xto OI	£to X*	£to 05 X	g to X	£ to X	§ X	1 X to—*		
to	to	00		to		to	to	to	to	to	1—*	05	to	to		00	05	#4	
£4^ X	£ to X Ht*	2 X to-t		S 05 X	15	1,5		£ X	is X	X	Xh—*	S 05 X	£**4 to X	» (S3 X	g	£0	£" 0>	to	
to '05		05 05		05	*05	to - 05		to to 05	to * 05	S 05	^3 *05	** 05	1—*	* 05	05	05	" to	3* w	
to	to				05	1			to; ;	to	to	to	1					to	
to 05	4»			05		Q	4		to	to		—	^3	£	to	N*4			
		to	to			to		t—*		00		»—		to	to			f—* 0.3	
				8?	to				to			to	to		to	N3 to—* CO		.	to*
£ to									1+									5 g	

D			13	L		L _t				100 .,		
	.	.		S	
3	6	±0,25	1	17	±0,3	24	±0,3	5	5	----	—	0-,87
4	7		2	18		26		6	6	—	1,51	1,44
6				21		31			7	0,94	2,68	2,56
8	8		3	22		32		9	9	1,38	3,93	3,76
10				26		34			10	1,84	5,24	5,02
12	9		4	28		37		13	13	2,61	7,43	7,12
14	10			30		39 ^			15	2,86	8,16	7,81
16			12	5		31		41	17	4,10	11,65	11,18
18	12	6	33	45 1	18	4,76	13,55	13,00				
20			36			49	5,98	17,05	16,30			
22	13	7	39	51	21	6,80	19,38	—				
25			43			56	22		7,70	21,90		
28	14	9	44	58	28	9,45	26,90					
30	15					11,31	32,30					
32	16	10	46		30	12,50	35,60					
34						13,69	38,90					
36						15,46	44,00					
						17,96	51 ,20					

D = 12

:

2

2—12—31

20197—74

45:

2—12—22

20197—74

12 18 9 :

2—12—13

20197—74

13 11 2 2 :

2—12—11 20197—74

, :

2—12—41 20197—74

, :

2—12—31 20197—74

2—12—22 20197—74

2—12—13 20197—74

2—12— 20197—74

2—12—41 20197—74

2 3. (, . 1, 2).
4. / — 13955—74,
5.

£>2 — 0,08 .
(, . 2).
6. — 13977—74.
7. — 13977—74.