

-

,

1 - () - -

,

2 (6—94 21 ,

1994 .)

:

3 , 25 1995 . 631

20720—93

1 1996 .

4 20720-81

© , 1996

,

Double-slider couplings.
Parameters and dimensions

1996—07—01

16000 •
6300 1,6

30

6300 •

4

16

1—3,

4

15150.

. . 3; 4.

- 1 — 12080;
- 2 — 12080;
- 3 — 12081;
- 4 — 12081.

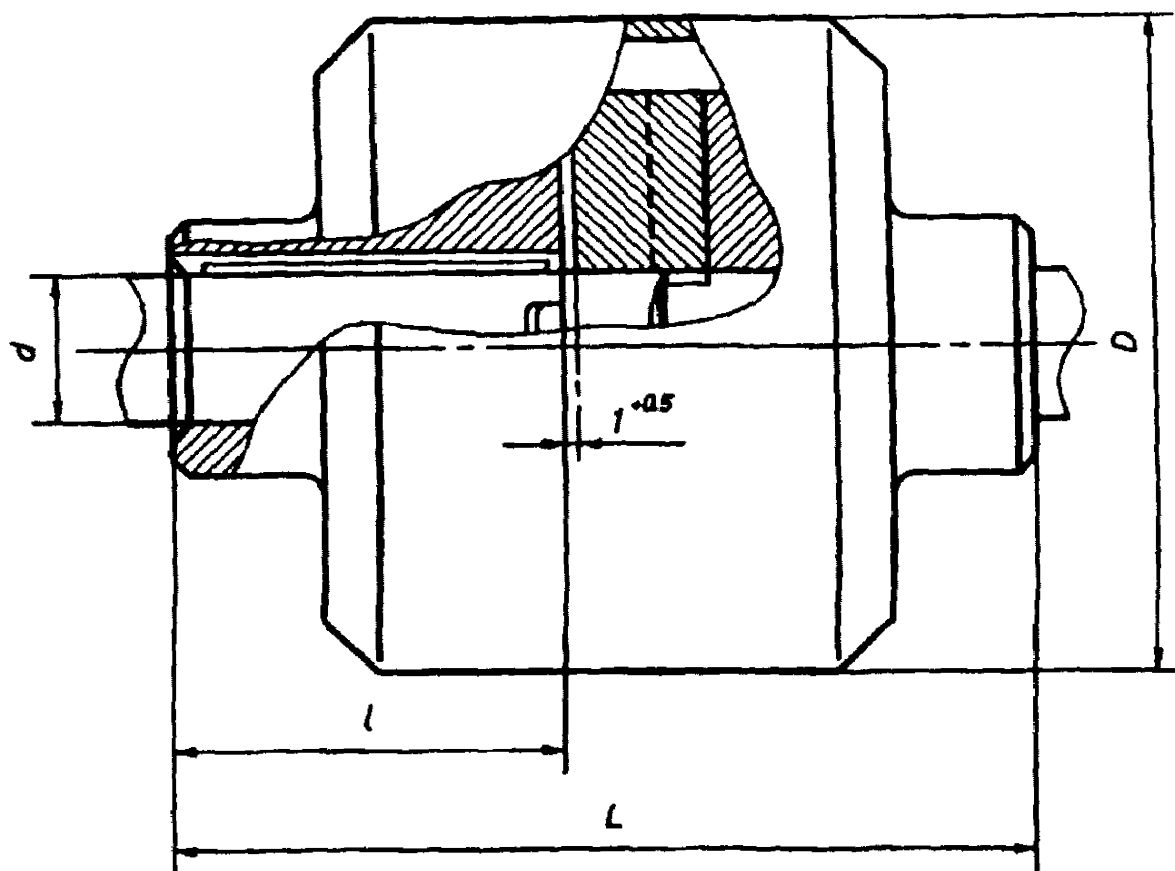
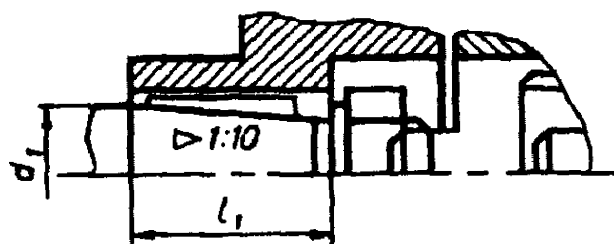
2

1.

3

1

1 2

3 4
1 2

1

--	d_7	9	d_7	9		$L, \text{ м}$		$l, \text{ м}$		$r, \text{ мм}$		$\alpha, \text{ °}$	$\beta, \text{ °}$									
	1		2			1,3	2,4	1	2	3	4		1.3	2,4								
16	16				100	~	75		28	~	18	0,6		1,4								
	18																					
31,5	16											0,7	—	1,6								
	18														—	1,5						
			19														—	1,4				
	20																					
	22					“	90		36		24	0,8		1,3								
63	20														—	105	42	—	26			
	22																			—	6,3	
			24																			—
	25				7,4																	
28				7,2		7,0																
125	25		—				140	185	140	80	58	60	38									
	28																					
	30																					
	32																					
	35																					
	36																					

-	d_7	9	d_7	d_9		$L,$		$/.$		$,$			$, ,$			
	1		2			1,3	2,4	1	2	3	4		1,3	2,4		
250	32				170	185	140	80	58 1	60	38	1,2	11,0	10,0		
	35															
	36	—														
		38				245	190		82	84	56		10,0	9,0		
	40	—											11,0	10,0		
		42											10,0	9,0		
	45															
400	—		38		170	185	140	80	58	60	38	1,6	11,0	10,0		
	40	—														
	—		42			245	190		82	84	56				10,0	9,0
	45															
		48														
	50															
		53														
630	45				210	245	190		82	84	56	2,0	31,0	27,0		
			48													
	50															

3/ .	d_7	d_9	d_7	d_9		$L, \quad ,$		$/, \quad$		$/, \quad$			$, \quad ,$	
	1		2			1,3	2,4	1	2	3	4		1,3	2,4
€30			53		210	245	190	110	82	84	56	2,0	31,0	27,0
	55												29,0	26,0
			56			305	235	140	105	107	72		31,0	28,0
	60		—											
	63													
1000	50					245	190	110	82	84	56	2,2	31,0	26,0
			53										30,0	25,0
	55												29,0	26,0
			56			305	235	140	105	107	72		31,0	28,0
	60												30,0	27,0
	63				29,0								26,0	
			65											
	70													
	71													
	1600	60				2S0							2.5	49,0
63		—		48,0	44,0									

-	d_7	dx_9	d_7	dx_9		$L, \quad ,$		$/,$		$/$		$, \quad ,$	$, \quad ,$							
	« 1		2			1.3	2,4	1	2	3	4		1.3	2,4						
*	—		65		250	305	235	140	105	107	72	2,5	48,0	44,0						
1600	70		—										360	280	170	130	132	92	47,0	43,0
	71		—																40,0	36,0
	—		75																42,0	38,0
	80		—			41,0	35,0													
	—		85																	
2500	70		—		290	305	235	140	105	107	72	3,0	53,0	46,0						
	71		—										360	280	170	130	132	92	52,0	45,0
	—		75																56,0	48,0
	80		*			55,0	47,0													
	—		85			53,0	48,0													
	90		—			51,0	44,0													
	—		95			55,0	48,0													
	100		—			440	350	210	165	167	122									
	4000	80		—		310	360	280	170	130	132		92	3,5	56,0	48,0				
—		85		55,0	47,0															

-	d_7	d_9	d_7	d_9	,	$1, -$		$/,$		$,$,	$, ,$ $,$	
	1		2			1,3	2.4	1	2	3	4		1,3	2,4
4000	90	—			310	360	280	170	130	132	92	3,5	53,0	48,0
	—	95											51,0	44,0
	100	—											55,0	48,0
	—	105											53,0	46,0
		—											52,0	45,0
6300	100	—			350	440	350	210	165	167	122	4,0	125	108
	—	105											123	106
	110	—											121	104
	—	120											115	99,0
	125	—											112	97,0
	—	130											122	105
	140	—				550	450	250	200	202	152		114	99,0
10000	110	—				440	350	210	165	167	122	4,5	122	104
	—	120											115	99,0
	125	—											112	97,0
	—	130			550	450	250	200	202	152	122		105	

1

,

»	d_7	d_9	d_7	d_9		l, ' -		/,		.		, ' , ' ,		
	1		2			1,3	2,4	1	2	3	4			
10000	140		—		350	550	450	250	200	202	152	4,5	114	99,0
16000	125		—		390	440	3S0	210	165	167	122	5,0	203	148
			130			550	450	250	200	202	152		200	145
	140												205	184
			150										198	179

— !

41.7115

[illegible]

977-88	4
1050-88	4
4543-71	4
8908-81	7
10748-79	5
12080-66	1
12081-72	1;
15150-69	
23360-78	5

021007	10.08.95.	20.02.96.	26.04.96.
0,70.	0,57.	200 ? 3399.	198.
		107076,	,
		14.	
		— "	"
		6	