



**24648—90**

**( 728 — 88)**

<9\*

»  
|

«

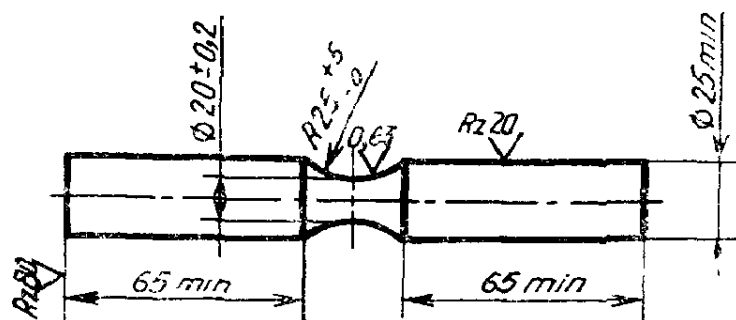
Pig iron for castings. Sampling and making the specimens for mechanical testing

24648—90  
(CT 728—88)

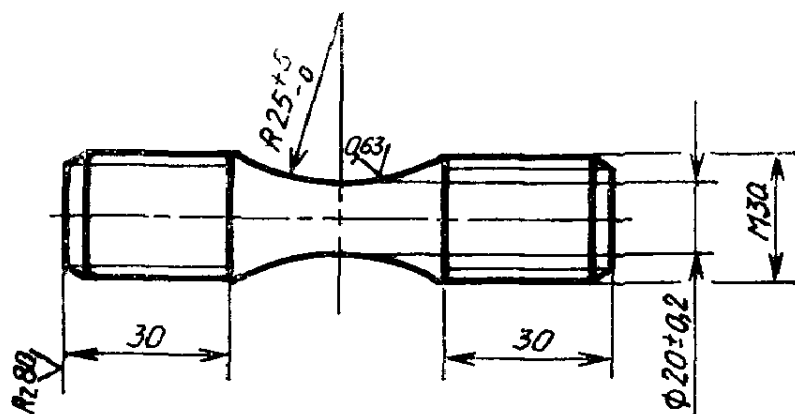
0 41

01.07.92  
01.07.97

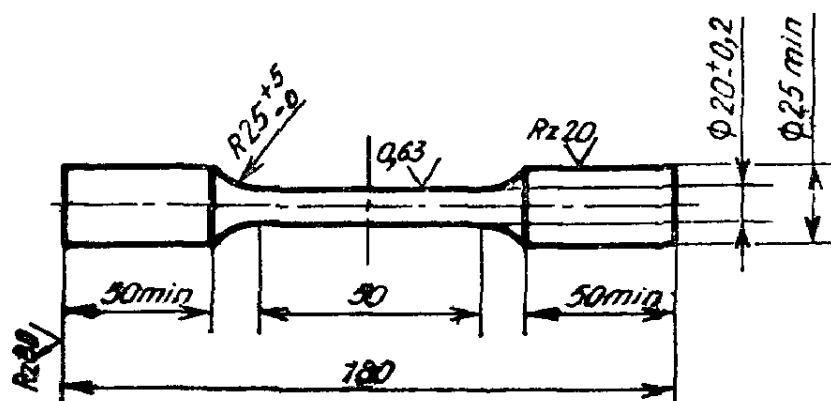
1.1. 1.2. 1.3. 2. 2.1. (30"~ 40 2.2. 2.3.



. 1



Черт. 2



Черт. 3

2.4.

2.5. 500° ( 35 ).

2.6. 200 20

1. 2.7. 1, 2 3.

1497. 2 8.

3. 3.1. , 4 1 . 2.

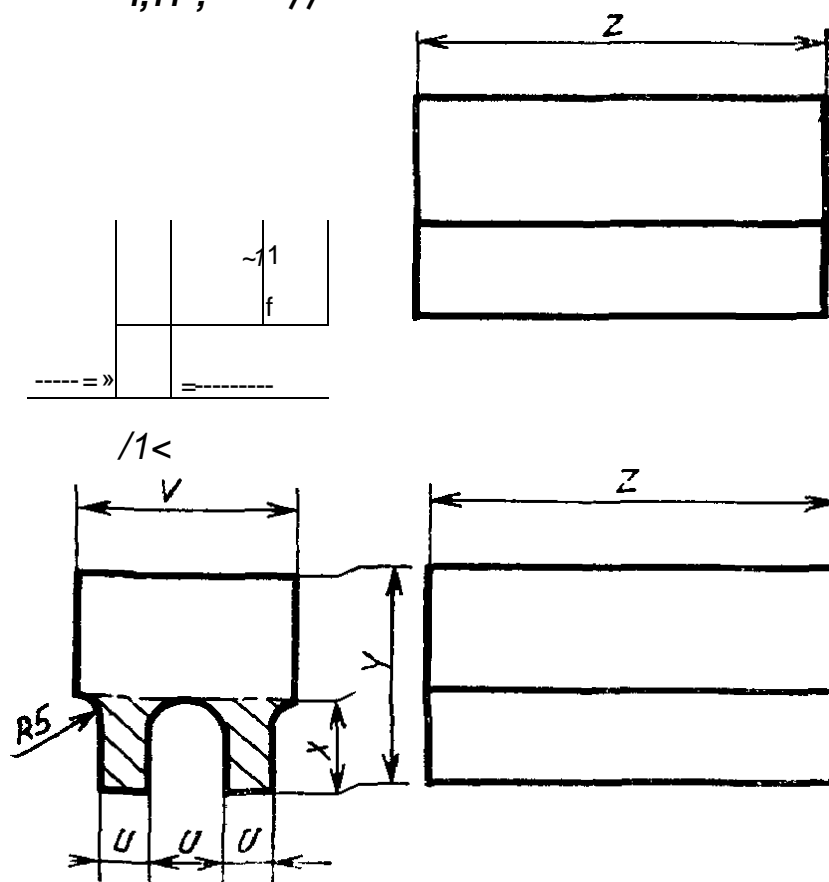
3. 3.1. , 4 1 . 2.

III IV : I, II 40 — I, , U- 80 — V- III IV U- V- III IV

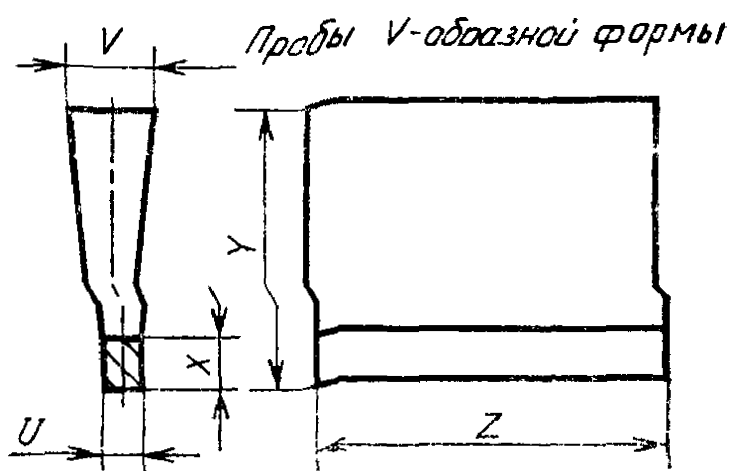
50 3.2. , 3 3 500° .

3 4. , 2\*

(7 5 1,11 , ^ //



черт. 4



черт. 5

I

	I j				IV
V	12,5	25	25	50	75
X	40	55	90	90	125
*	30	40	40	60	65
2	80		100	150	165

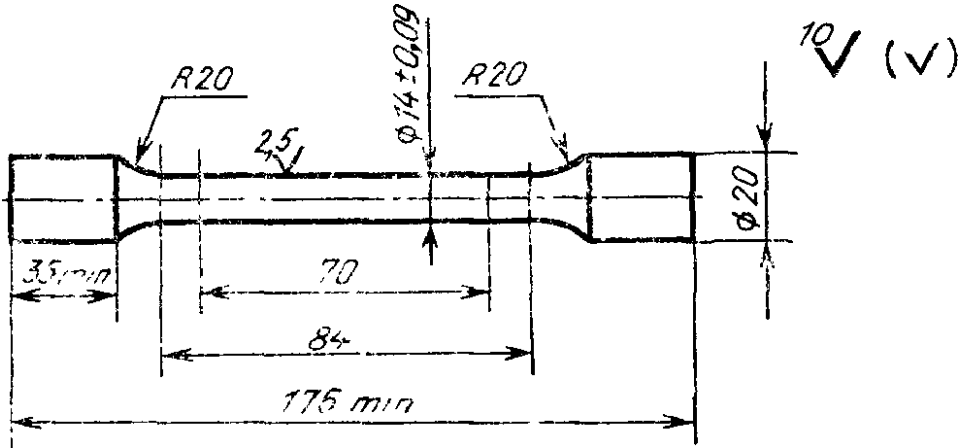
2

	II			IV
V	12,5	25	50	75
X	40	55	100	125
*	25	40	50	65
2	135	145	150	175

\*

3.5.

2.



. 6

3.6.

. 6.

1497.

3.7.

9012.

3.8.

V-

9454.

4.

4.1.

9, 12 15

8

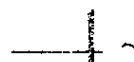
J6

. 7

. 3.

/?

nm



>

Lf

L-

L f

. 7

		$= 3d_Q$	1	R		
					D \	L <sub>lt</sub>
8	±0,7	25	28	10	12	35
9		27	30	6	13	40
12		36	40	8	16	50
15		45	50	8	19	60
16		50	56	10	20	60

4.2.

-

.

0,1 .

0,2 .

4.3.

,

-

,

.

.

4.4.

,

.

4.5.

.

4.6.

-

.

4 .

9012.

5.

5.1.

,

.

-

,

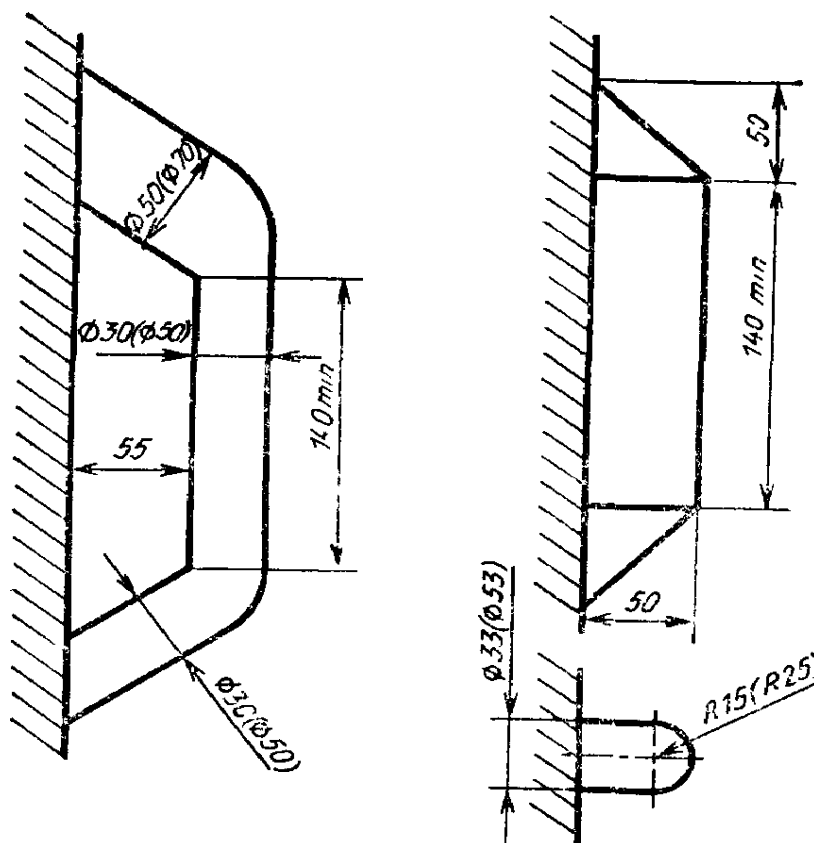
.

5.2.

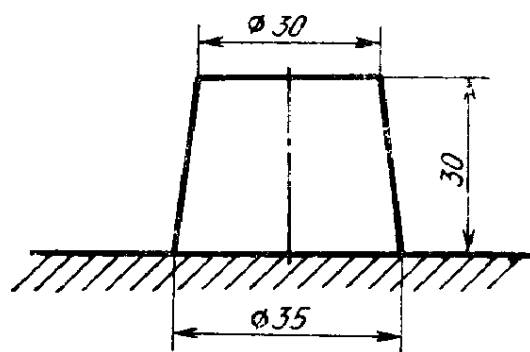
,

,

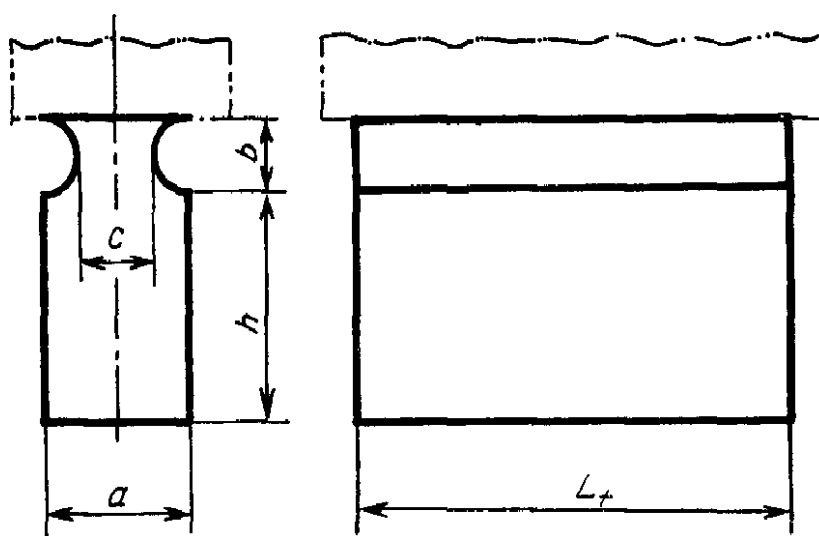




. 8



9



. 10

		1 &			<i>h</i>		<i>h</i>
30	60	40	30	20	40	60	180
. 60	200	70	52,5	35	70	105	180

L  
2.  
3.

:

I/

155 .

 $\&=0,75$  ;  $=0,5$  .

9.

24648—90

—

)

**24.07.90      2250**

— 5

728—88

—

24648—81

■

2.7; 3.6  
2.8; 3.7; 4.6  
38

.. 3