

2-96/69

,

1 - ( ) - -

, -

2 ( 4—93 21 1993 . ) , -  
:


3 , 10 1996 . - 4  
25021—93

1 1996 .

4 25021-77

© , 1996

, -

# Disk flexible couplings Parameters and dimensions

1996—07—01

4 200 • ,  
,

— 3,  
15150.

1

1 —

12080;

2 —

12080;

3 —

12081;

4 —

12081.

2

1.

•  
12080.

-

-

1

4

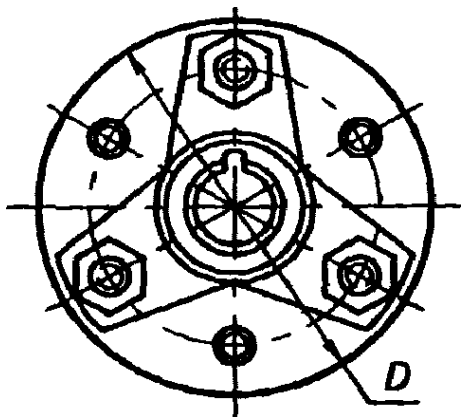
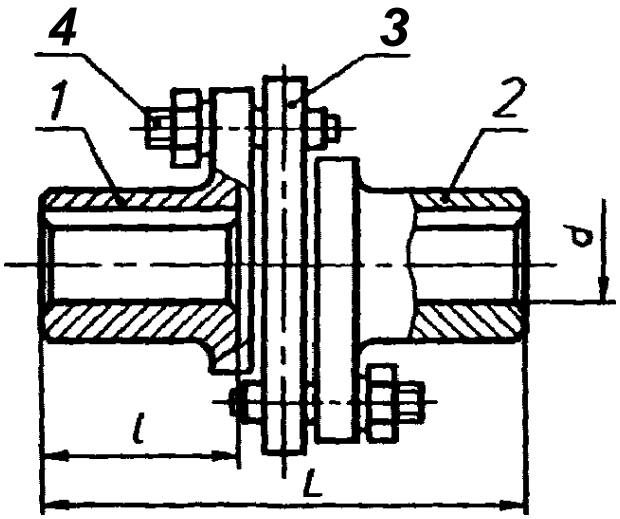
-

:

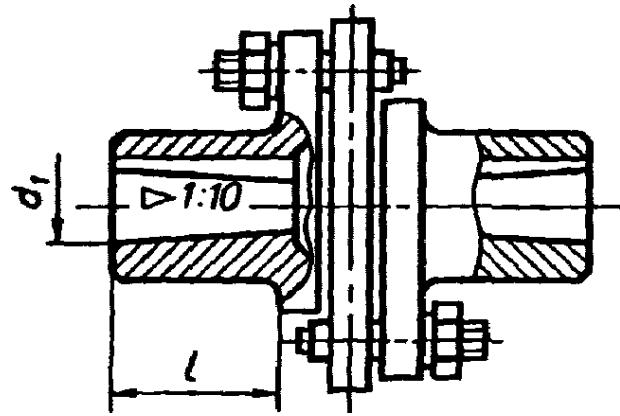
1



1 2



3 4  
! 2



2, 4—  
1

\*

\*

|

,

	1 ?	9	i 7	№		L				Ue							
						1	2	3	4	1	2	3	4				
4,0	8				56	65	-	45	-	22	*	15	-	10	100	1,0*	0,40
	9																
	10																
						70	5	55		35	22	18					
8,0	10				63									20	83	1,0*	0,50
	12																
	14					90	80	65		32	28	22					
16,0	12				80									40	83	1,0*	0,5
	14																
	16																
	18																
31,5	16				100	110	90	85	63	42	30	32	20	80	67	0,7	1,00
	18																
			19														
						135	105	105	80	52	38	40	26				

6—12087

,

—iZOSZ

\*

	i 7	A 9	1 7	4	ft Hl	L ,				( ,				-	-	-	-	L H
						1	2	3	4	1	2	3	4					
		Pul		2														
	-		31			203	100		123	82	60	(3	40					
200,0	40		42	190		205	210	230	175	112	84	00	00	300	30	0,75'	150	0,2

- |



12

125

• ,  
1,

125-32—1-  
2:  
125-32-2-

25021—93  
25021—93

3:

32 ,

32 ,

2:

36 ,

4,  
125-32-1-36-4 2

25021-93

25021-93

-

263-75	8
270-75	8
1050-88	7
1412-85	6
8908-81	5
10748-79	3
12080—66	2
12081-72	U 4
15150-69	
15152-69	9
23360-78	3

621.825.7:006:354

21.060.60

15

41 7119

:

,

-

,

—

**. 312.**

.. 14.

6