

16



2006

16

Hard metal brazed tips, type 16. Design and dimensions

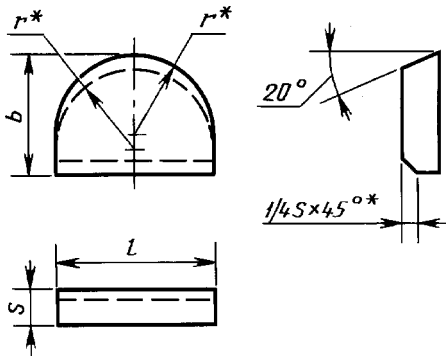
25405-90

25.100
77.160
19 6000

01.07.93

- 1.
- 2.

. 1.



* - .

1

	/	b				
16010	8	8	3,0	4,0	5	3, 4, 5, 7, 8, 9, 10
16030	10	10	3,5	5,0		
16050	12	12	4,5	6,0		
16210	16	14	5,0	8,0		3, 4, 7, 8, 9, 10
16250	20	16	6,0	10,0		3, 4, 5, 7, 8, 9, 10
16370	24	20	7,0	12,0		
16390	32	25	8,0	16,0		

3. — 25393.
 4.
 5. — 2209.
 6. : 3— 14 8; 4— 5 10; 5— 10 8- ; 7— ;
 8- 6- , 6- ; 9- 6, 10- 8.

2

	14 8	5 10	10 8-		6- , 6- , 6	8
16010	1,79	2,02	2,16	2,40	2,36	2,33
16030	3,23	3,65	3,91	4,32	4,25	4,20
16050	6,00	6,75	7,23	8,00	7,90	7,80
16210	10,20	11,60	12,40	13,70	13,50	13,30
16250	18,30	19,30	20,70	22,90	22,50	22,20
16370	29,00	32,80	35,10	38,80	38,20	37,70
16390	63,00	70,00	75,00	84,00	82,00	81,00

1.

2.

31.10.90 2762

3.

25405-82

4.

-

2209-90
 25393-90

5
 3

5.