

—

25681-83

Threaded pipeline connections. Rotary nipples.
Design

41 9300

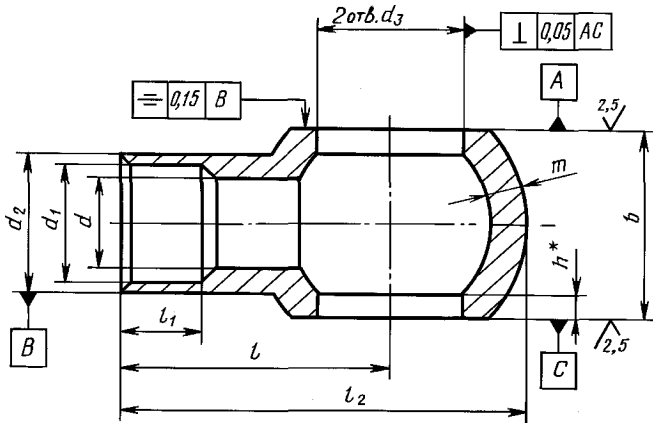
01.01.84

1.

- (
2.
1 —
2 —
3.

1

125
√ (✓)

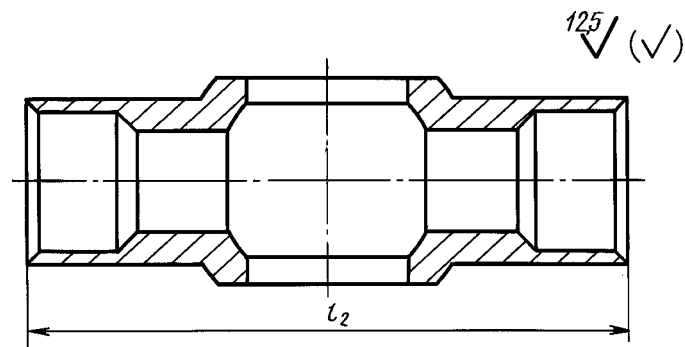


*

©

, 1983
, 2002

2



1. ,
2. — , 1. —

		Dy	, ()	d	d ₁ A II	^2	4 D II	/	/, +0,2	/ 2		h	,	b -0,3	1000 ,, , ,	
										1	2				1	2
1	3	2,0	10 (« 100)	2,0	3,1	5,5	8	12	4	19,0	24	1,8	1,8	8	6,14	6,69
	4	2,5		2,5	4,1	6,0									5,88	6,36
	5	3,0		3,5	5,1	7,5									6,12	6,83
2	6	4,0	16 (« 160)	4,0	6,1	8,5	10	14	4	22,5	28		2,3	10	10,89	12,30
	8	6,0		6,0	8,1	10,5	12	16		26,0	32				12	16,44
	10	8,0		7,0	10,1	12,5	14	18		30,0	36	14			28,69	30,50
	12	10,0		9,0	12,1	14,5	16	20		34,0	40	16		44,75	46,28	
	15	12,0		11,0	15,1	18,0	18	23	39,0	46	2,5	3,5		20	54,36	67,00
	(16)			12,0	16,1	19,0	22	26	42,0	52			56,49		69,60	
	18	15,0		14,0	18,1	21,0			45,5				25	83,21	75,60	
	22	20,0		18,0	22,1	25,0	27	29	52,0	58			30	116,10	117,50	
	28	25,0		23,0	28,1	32,0	33	34	61,5	68			3,0	4,5	36	230,00
	(34)	32,0		29,0	34,2	39,0	42	40	74,0	80	44	315,80			306,30	
	35				35,2						313,60					
	42	40,0		36,0	42,2	46,0	48	46	86,0	92	5,0	52			441,00	465,00

1 $D_H=5$:

1,

1-1-5 25681-83

(, . 1).

. 3 25681-83

4. — 45 1050, 35 1050, 30 1414.
5. — , 15763.

1.

2.

25.03.83 1366

3.

2637—80.

4.

5.

-

1050-88
1414-75
15763-91

4
4
5

6.

, 7—95
(11—95)

7.

(2002 .) 1, 1988 .(9—88)

. . 02354 14.07.2000. 19.08.2002. 01.10.2002. . . 0,47. . . 0,35.

229 . 7593. . 801.

, 107076 , ., 14.
http://www.standards.ru e-mail: info@standards.ru

— .“ ”, 103062 , ., 6.
080102