



16

**(26650—85
333-84, 335-84,
337-84)**

-

• • , • • , • • , • • , • • -
• •

• •

10

1985

.

3560

16

26650—85

Single rod hydraulic cylinders
for nominal pressure 16 MPa
Mounting dimensions

(333—84,
335—84,
337—84]

41 4300

10

1985 . 3560

01.07.86

1.

16

250

12%.

335—84,

337—84

6020/1—81

333—84,

2.

(1),

(3) —

. 2

(2)

. 2;

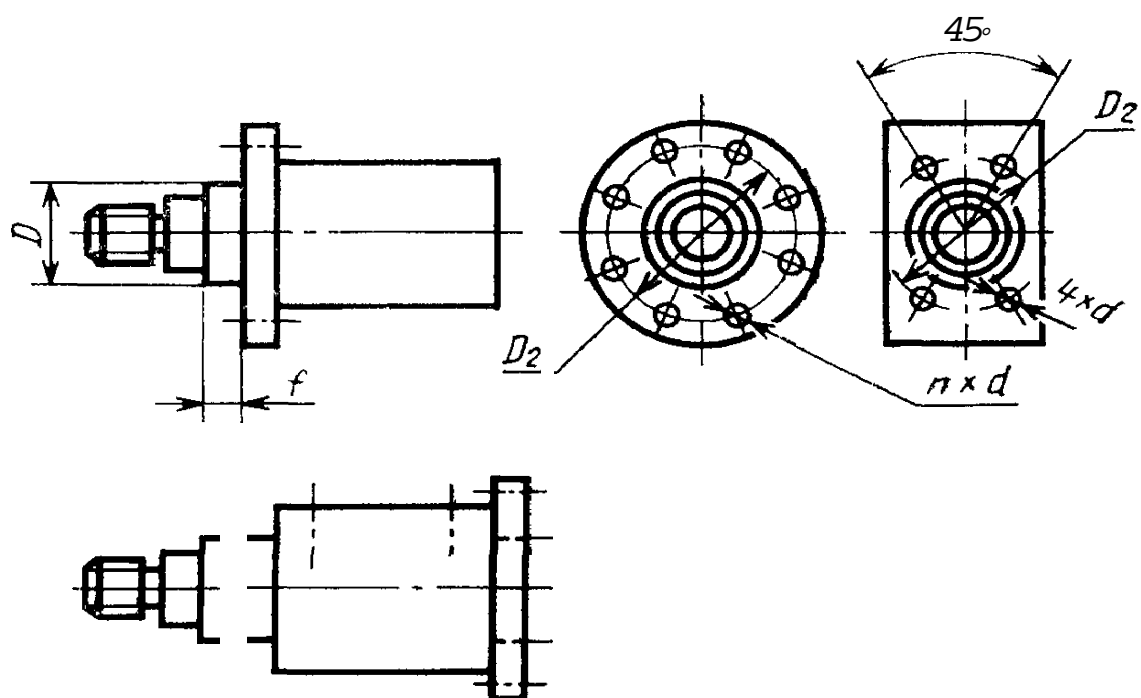
—

. 3

. 3

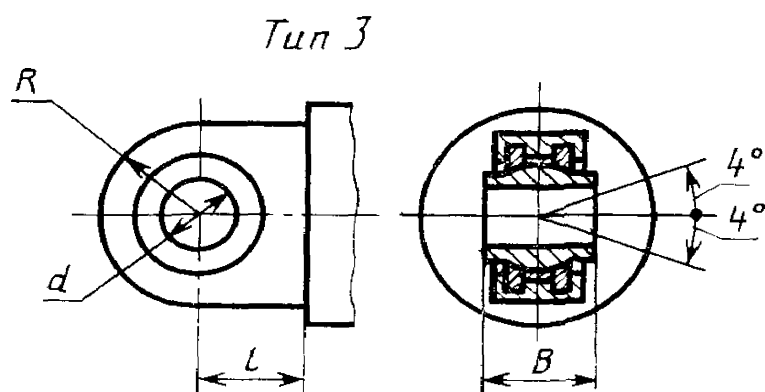
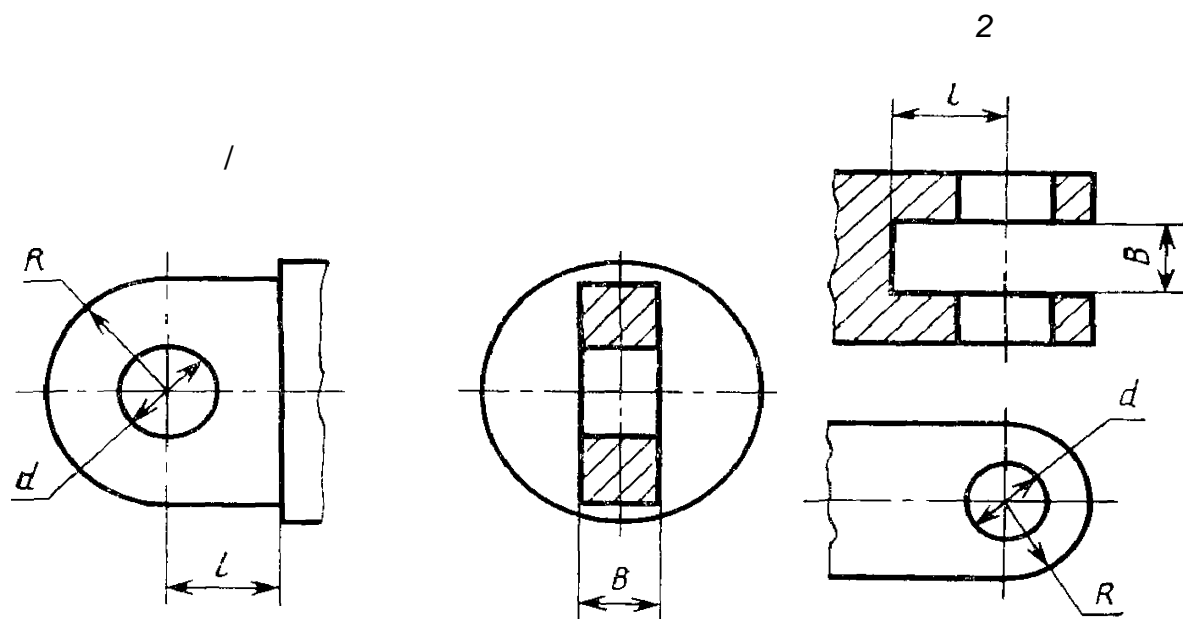
{£)

, 1986



*

	D_{f9}	Dt_9	J_{s12}^d	H_{13}^d	$\frac{I}{\alpha_2}$	n
25	32		75	6,6	3	8
32 40	40 50		92 106	9		
50	60		126	11	4	
63 (70)	70 75		145 155	14		
80 (90)	85 96		165 185	18 !		
100 (110) 125 (140) 160	106 116 132 145 160		200 215 235 255 280	22	5	
(180) 200	180 200		310 340	26		
(220) 250	220 250		360 420	33	8	
(280) 320	280 320		440 520	39		
400 500	400 500		640 720	45	10	12



	<i>d</i>				/? , > iee	
	9	7	2			
	1 2	3	1 3	2		
25	12	(15)	12	(15)	16 (20)	16 (20)
32	16	(17)	16	(17)	20 (23)	20 (23)
40	20		20		25 (28)	25 (28)
50	25		25		32	32
63	32	(35)	32	(35)	40 (45)	40 (45)
(70)	36	(35)		(35)	45	45
80	40		40		50	50
(90)	50		50		63	63
100	50		50		63	63
()	60		60		71	71
125	63 ¹	1 (70)	63 ¹	1 (70)	71 (80)	71 (80)
(140)	70		70		80	80
160	80		80		90	90
(180)	90		90		100	100
200	100		100		112	112
(220)			110		135	135
250	125	1 (120)	125	(120)	160 (145)	160 (145)
(280)	140		140		160	160
320	160		160		200	200
400	200		200		250	250
500	250		250		320	320

1
2

$d>$, R / ,

3635—78. , —

3

v				
			%	
		-----	\pm .	<

-	d_{f8}	2	J16	-	d_{18}		
25	12	63	10	(140)	70	200	56
32	16	75	12	160	80	240	63
40	20	90	16	(180)	90	210	03
50	25	105	20	200	100	295	80
63	32	120	25	(220)		300	90
(70)	36	100	25	250	125	370	100
80	40	135	32	(280)	140	360	100
(90)	50	140	40	320	160	470	125
100	50	160	40	400	200	570	160
()	60	170	45	500	250	700	250
125	63	195	50				

3. 25 500 , — -
25 125 .

4. 01.07.91.

27.11.85 . . 2001 86 0.5 . . 0,5 .- . 0,34 > - . .
. 16000 3

« > , 123840, , ,
„ 3. , 256. . 3424