



(26890—86
5195-85)

**(26890-86
5195-85)**

-

... , ... , .3. , ... , ... -
 , ... , ...

. . .

-

11 1986 . 1198

26890-86

Hydraulic valves. Connecting dimensions
of subplate mounting surfaces

fCT 5195—85)

414400

11

1986 . 1198

01.07.87

1.		32	-
	,	,	,
	,	,	,
2.	01.07.87.		-
		5195—85	-
	4401—80.		-
2.			-
.	1 —18,		
.	1—6.		
3.			-
			-
	1.		-
4.			-
		D_y	-
		2.	
5.		.	1 —18
	1—3	:	

, , , — ;
 $X, , V^7$ — ;

L —

G —

6.

7.

8.

$1,5 D (2D+6) , D$ —

9.

8 .

10.

— $\pm 0,1$;

— $\pm 0,2$.

11.

— 6 ,

— 12.

12.

—

0,01

100 .

13.

Ra

1,6 .

14.

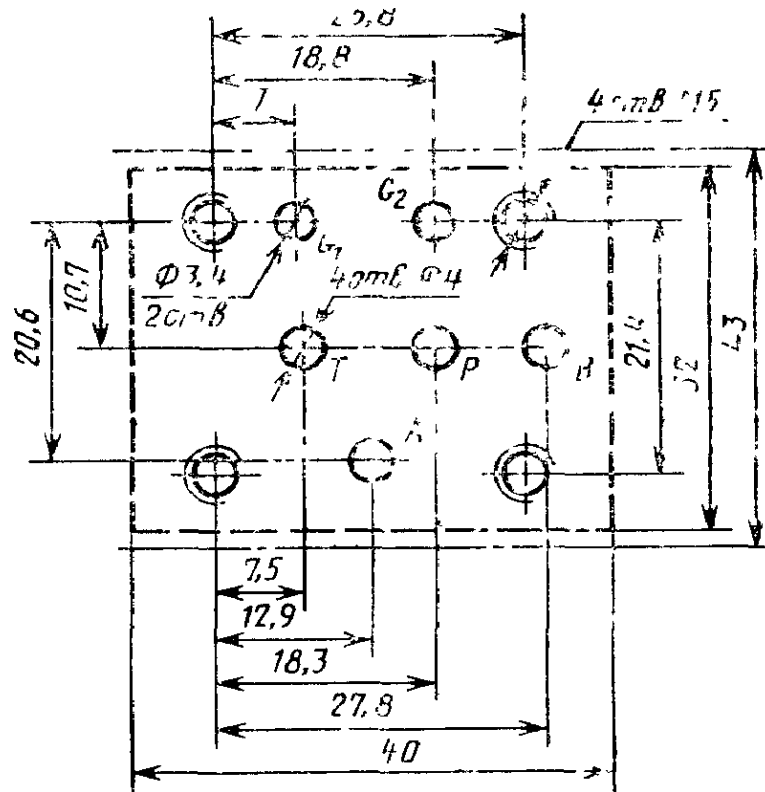
15.

01.01.90

3.

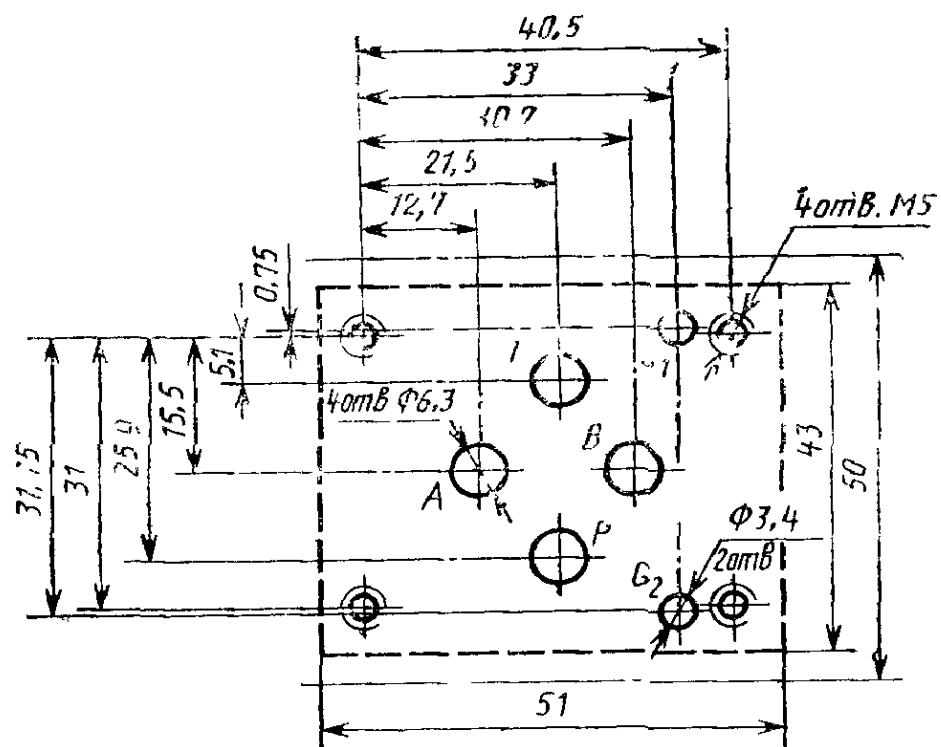
4

(D 4)



. 1

1. : Gy—
2. ; G_1 ; G_2 —

6,3 ($D_y 6$)

Черт. 2

1

Gi —

2—

G,

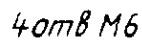
2—

2

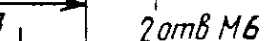
11,2

 $(D_v \ 16 \)$

17,5

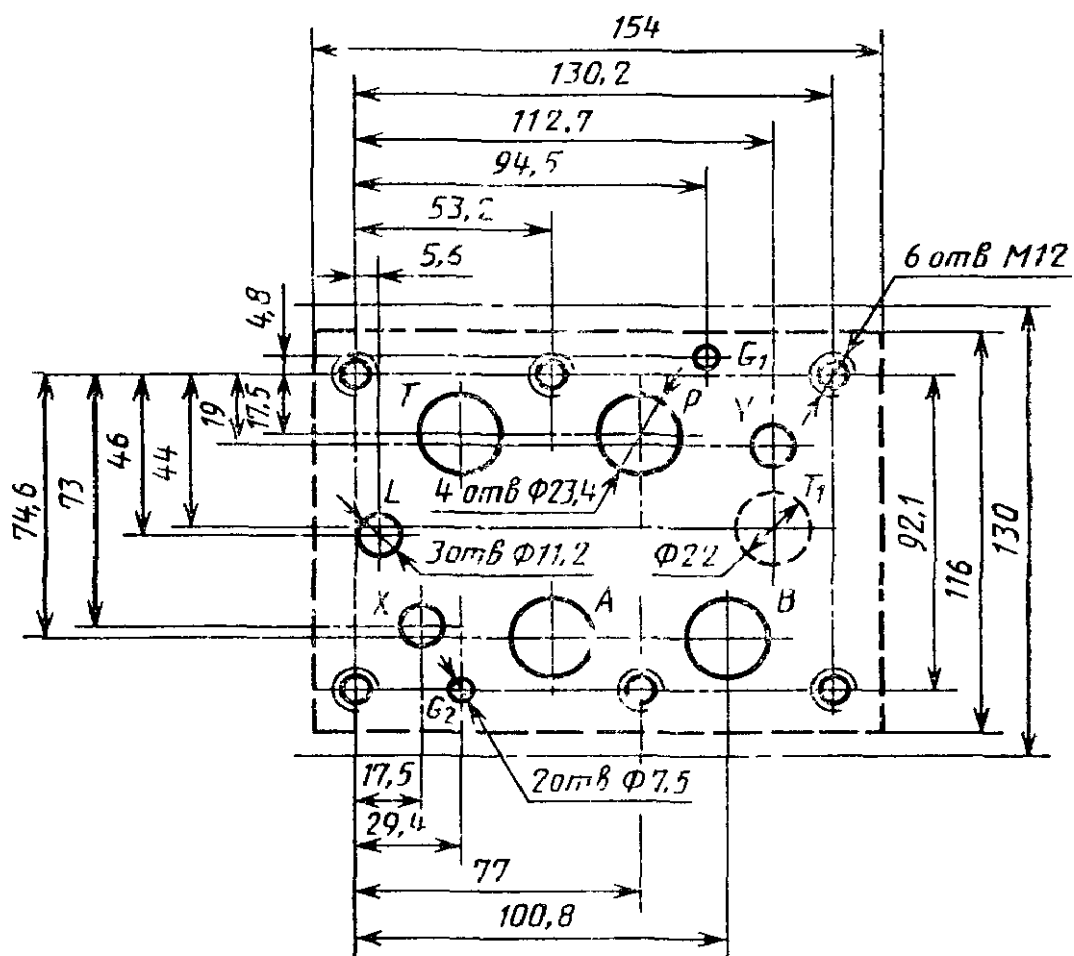


Черт. 3



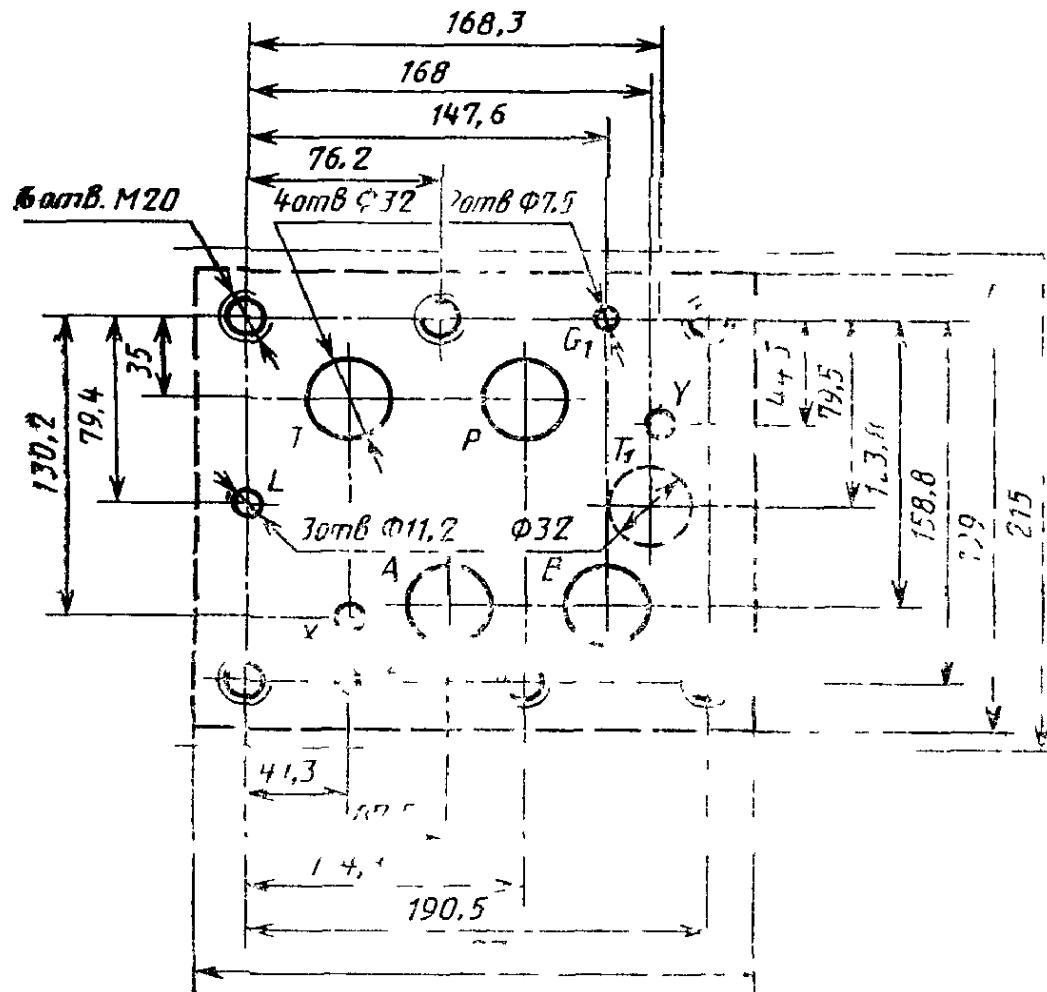
Черт 4

23,4 (D 20)



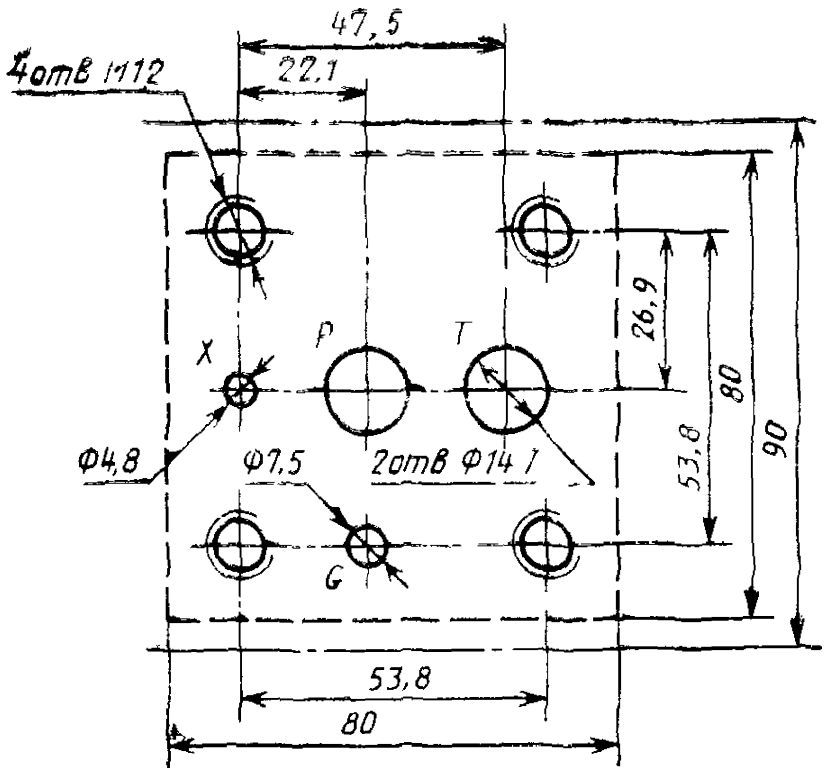
Черт. 5

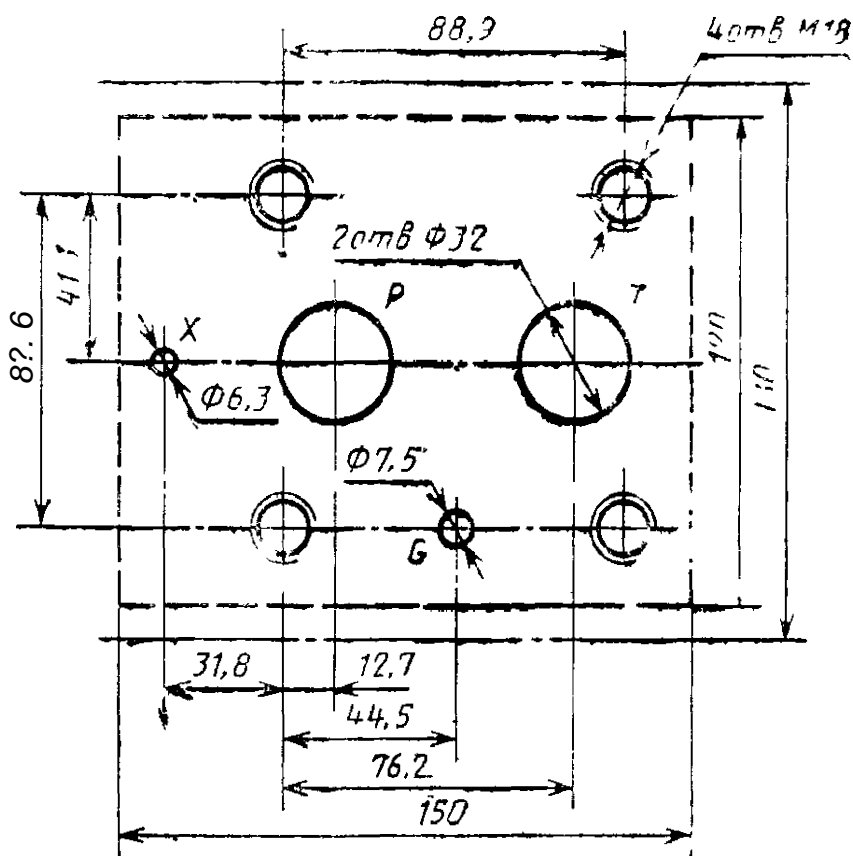
32 (D_y 32)

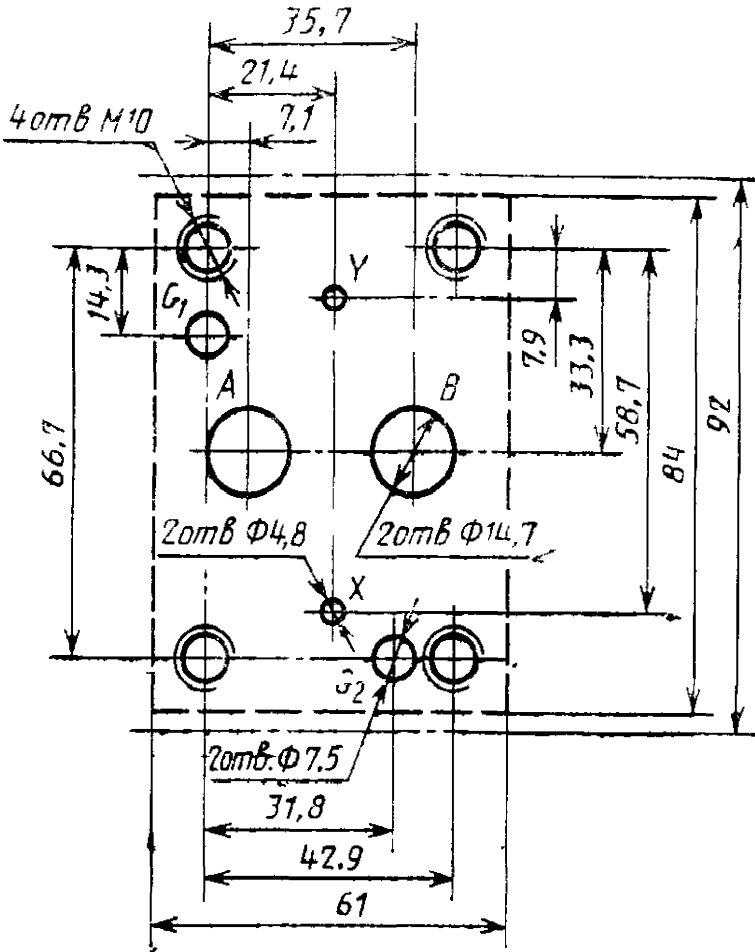


. 6

24,7 ($D_y 10$)



(D_y 32)

$(D_7 \ 10 \)$ 

Черт. 10

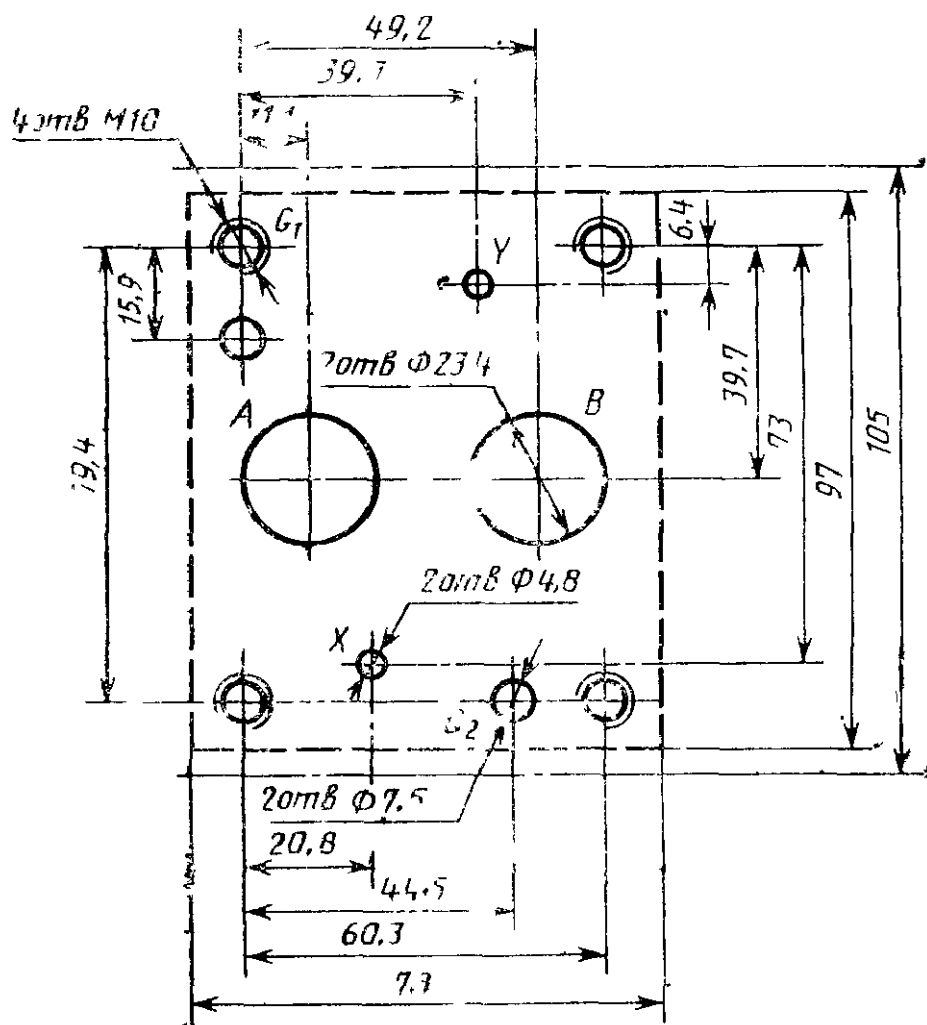
Примечание. Отверстия для штифтов: G_1 — для предохранительных клапанов; G_2 — для остальных аппаратов.

: <*4,(«

:

23,4

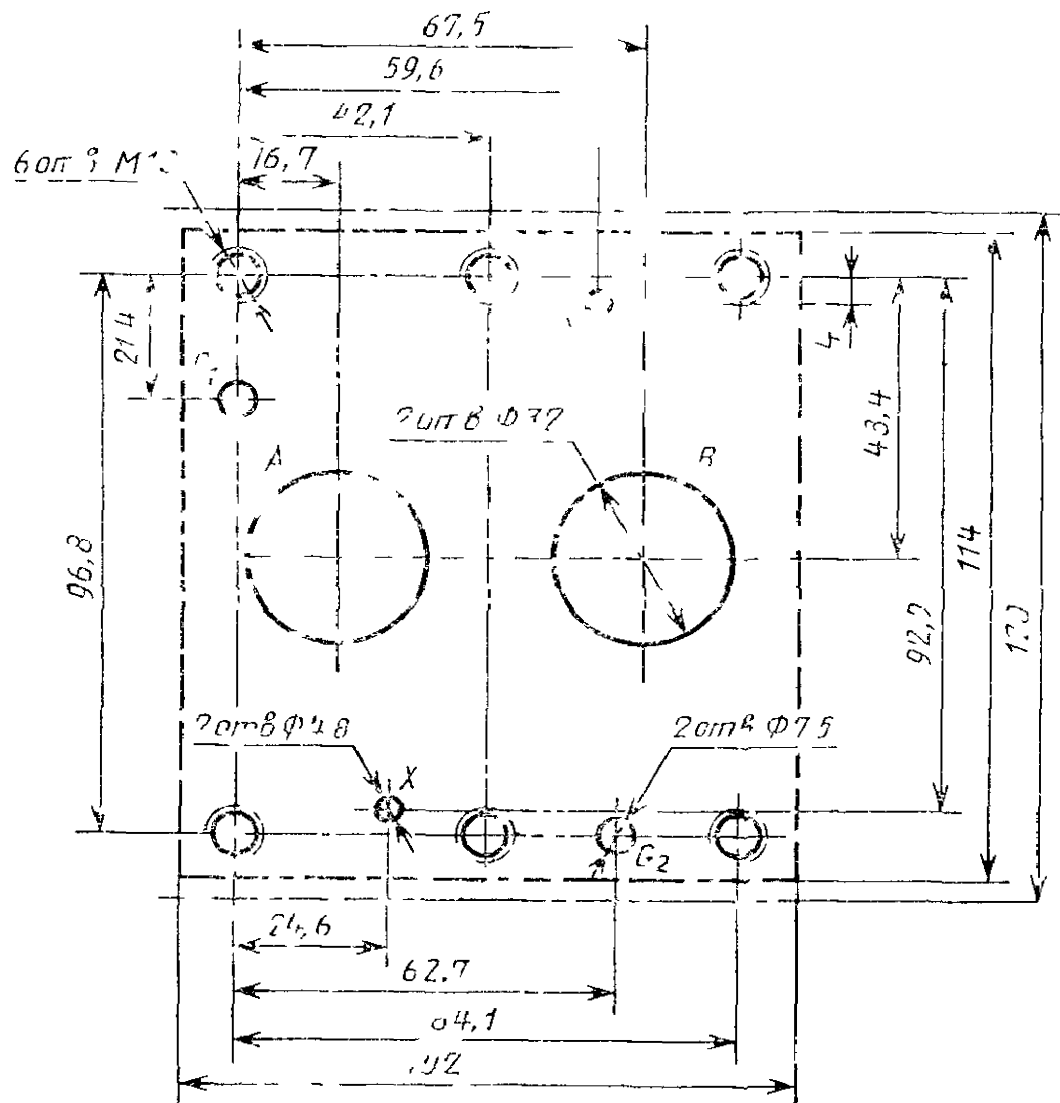
(D 20)



Черт 11

: G] —
, G₂ —

32 (D 32)

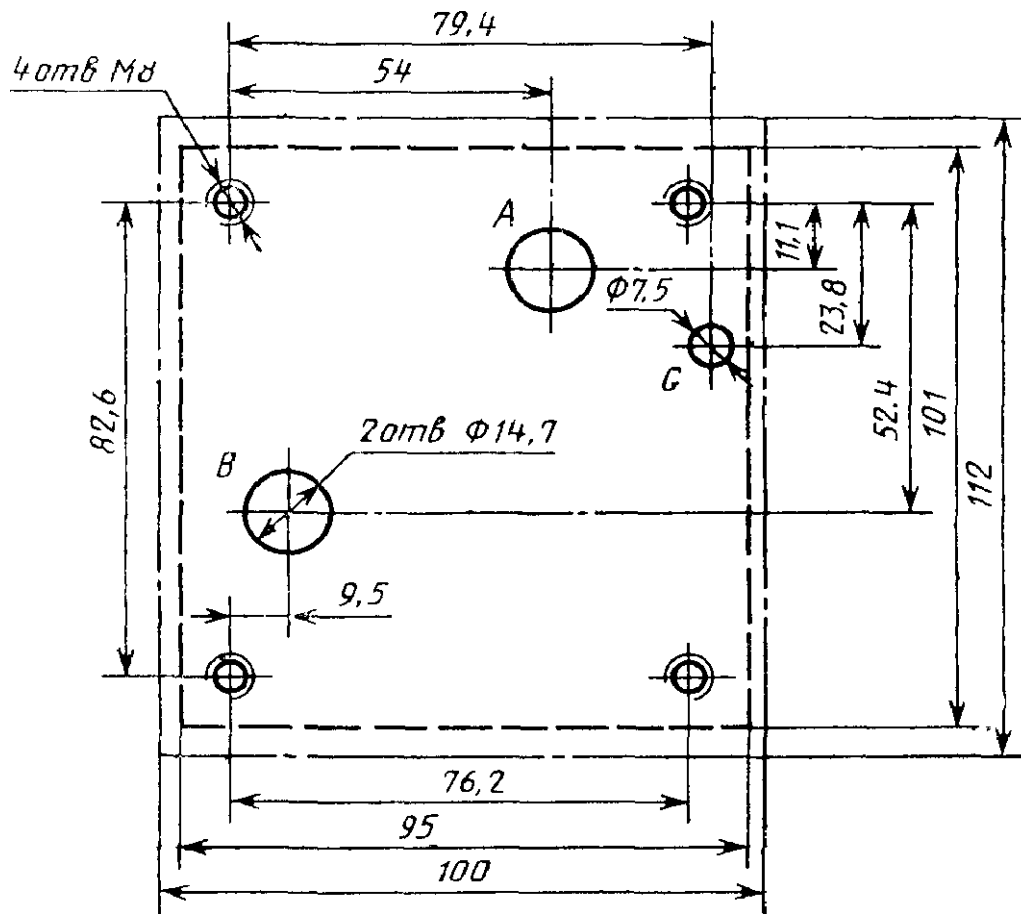


. 12

. Gi —

, G₂ —

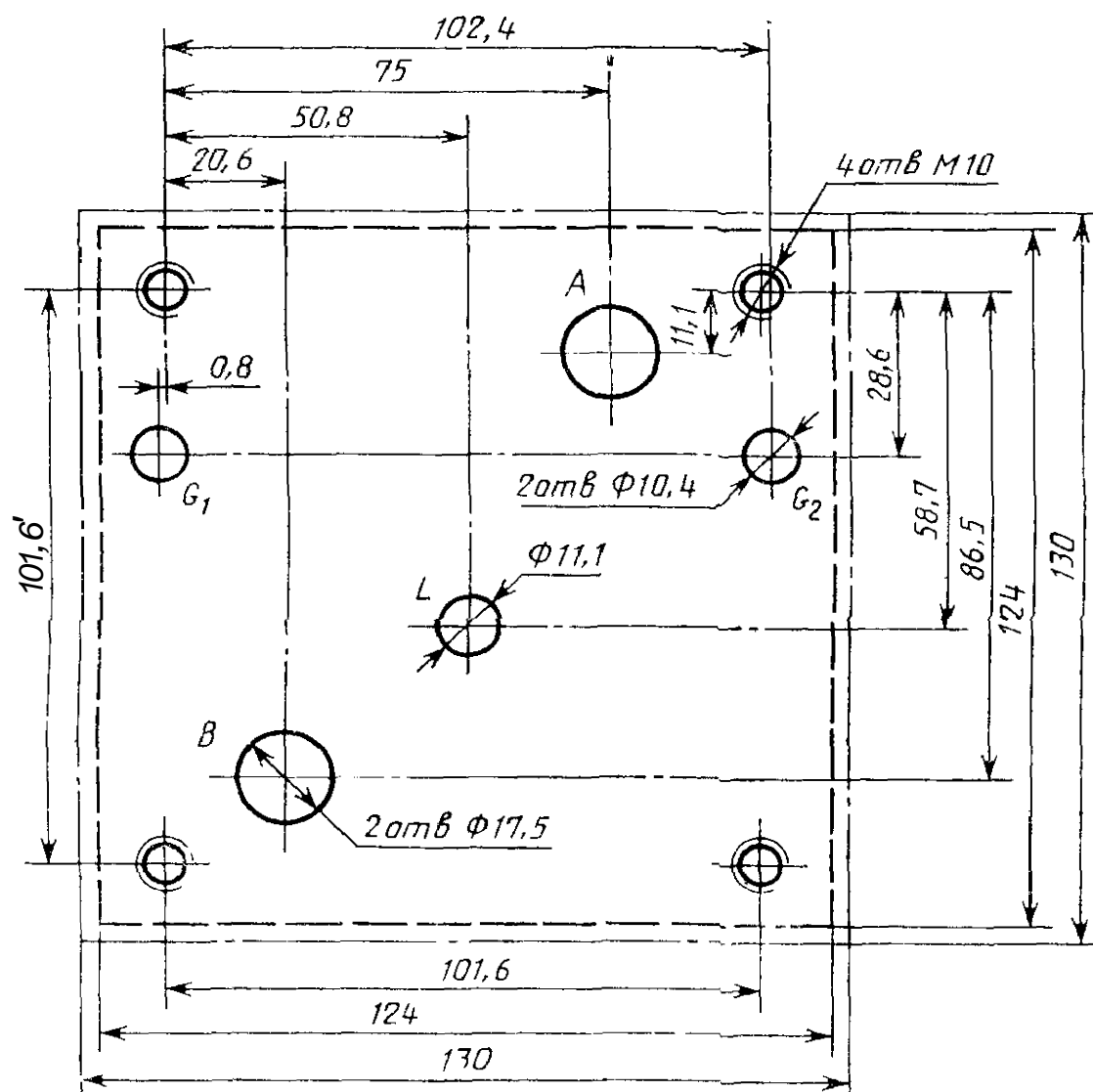
14,7 (Е) 10)



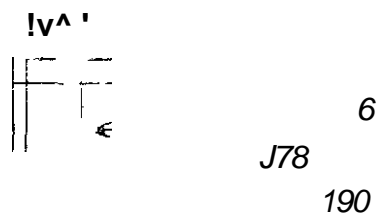
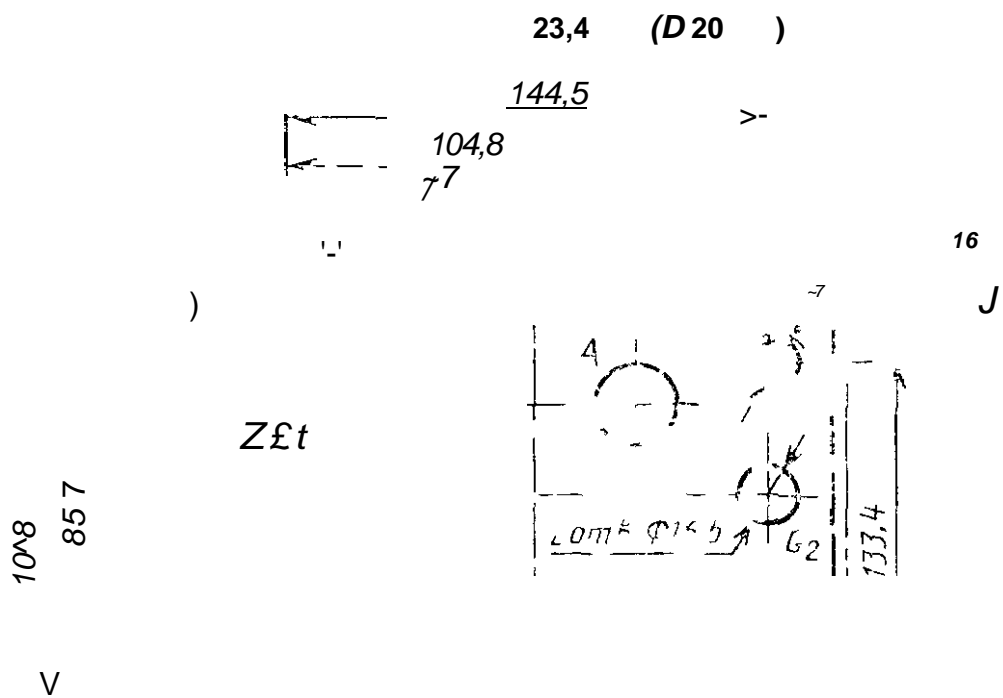
. 13

*

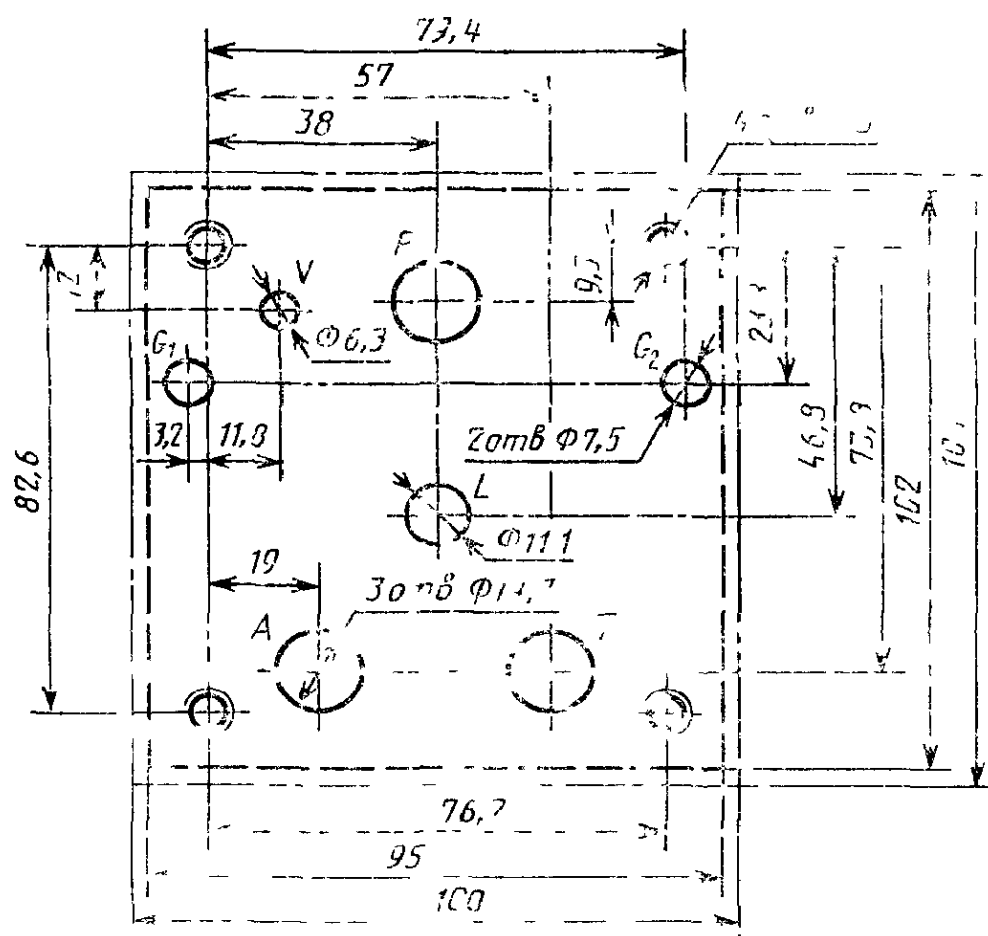
17,5 (D 16)



. 14

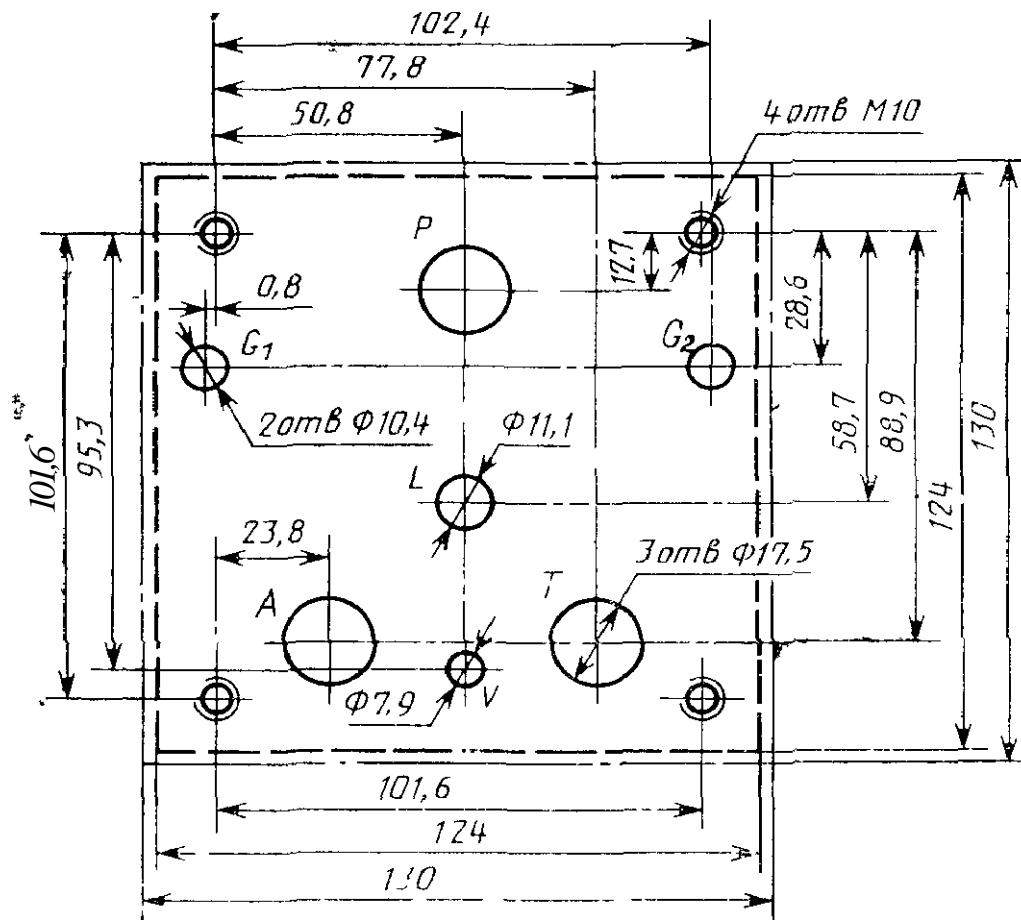


14,7 (E> 10)

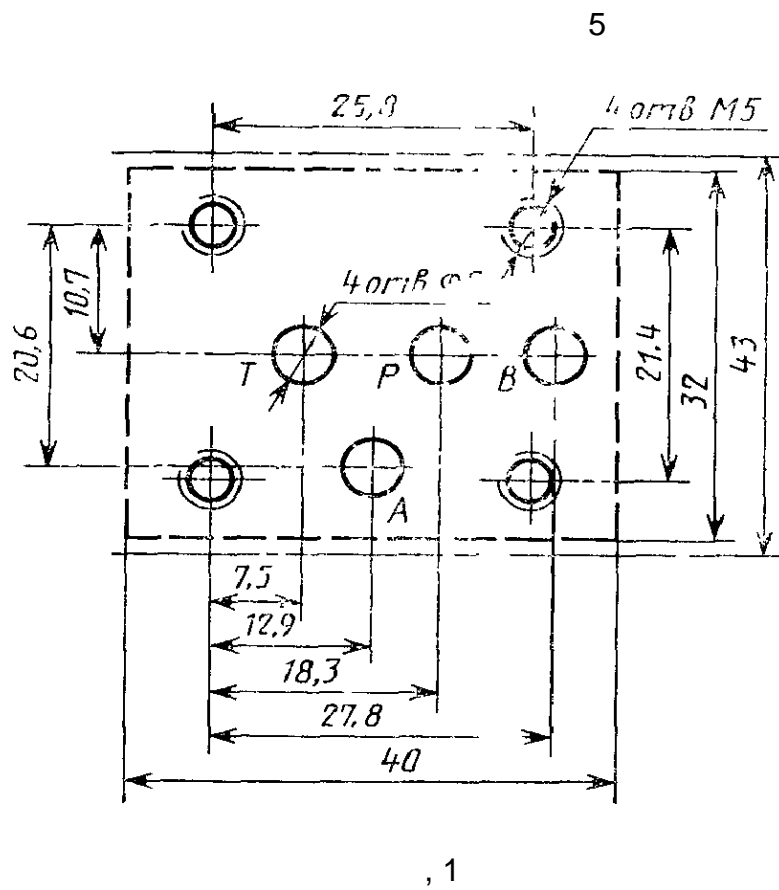


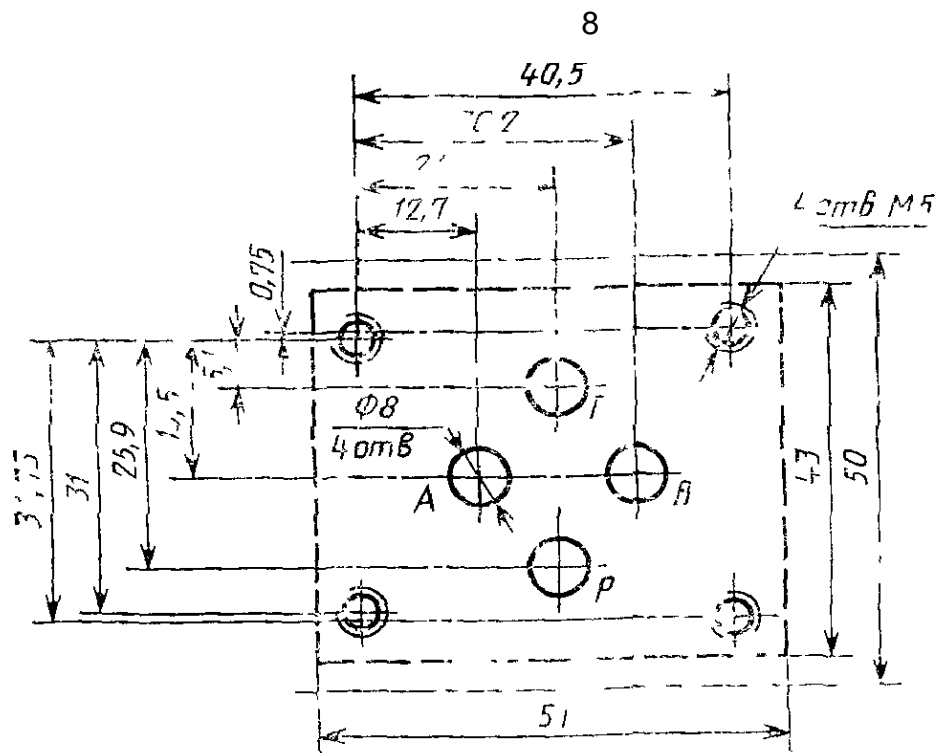
.16

17,5 (D 16)



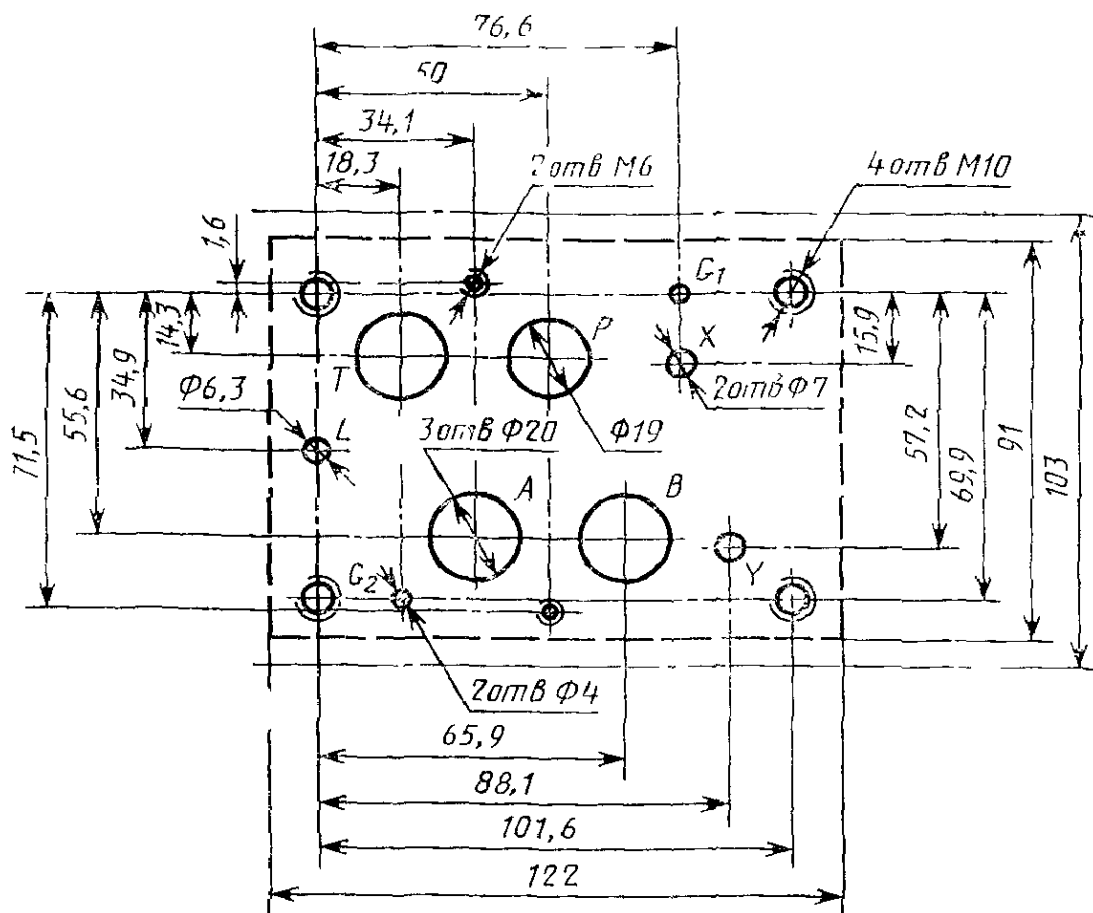
. 17



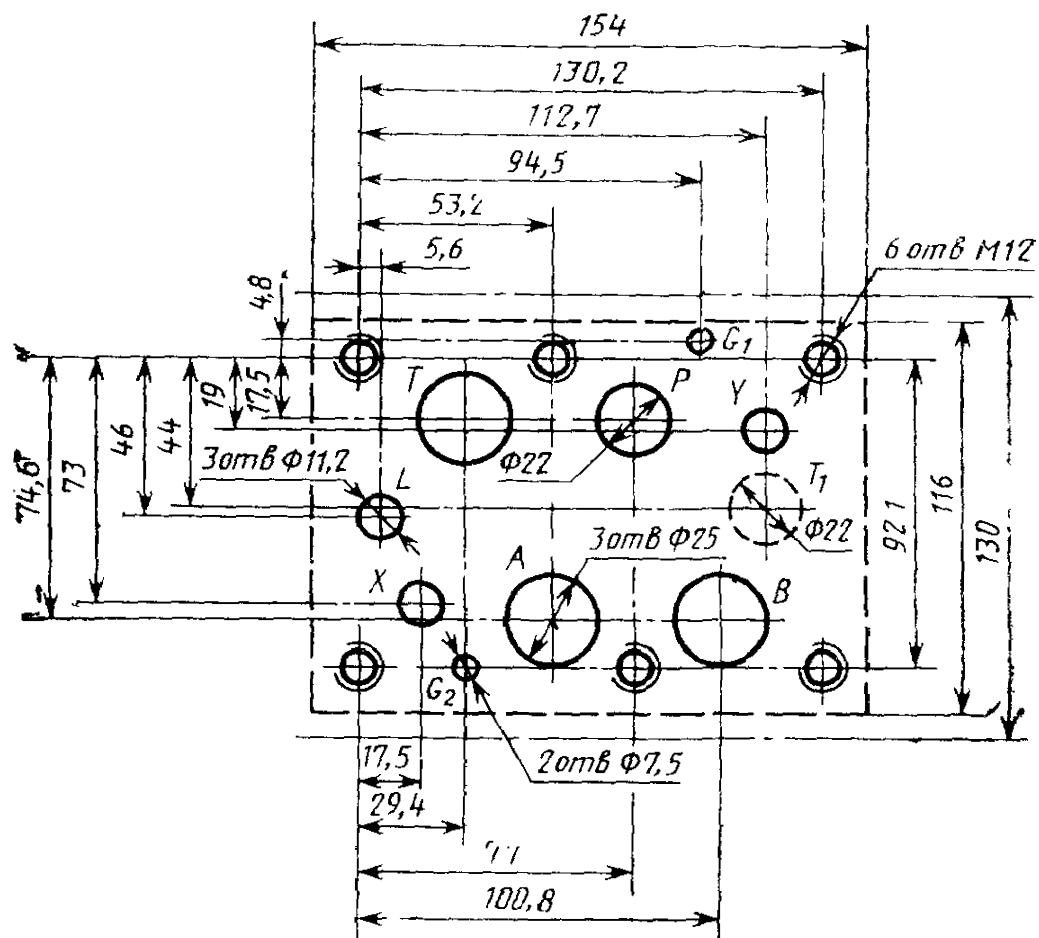


Черт. 2

20



. 3

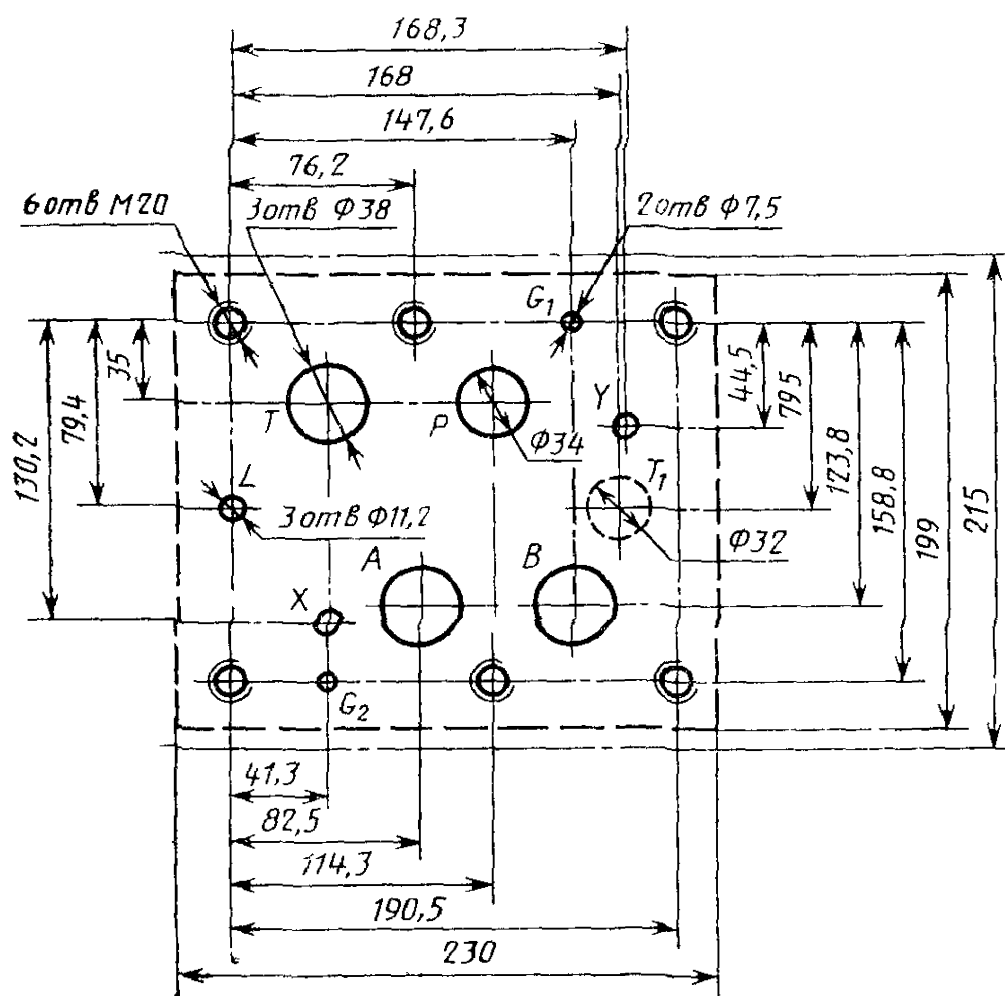


4

i —

*1

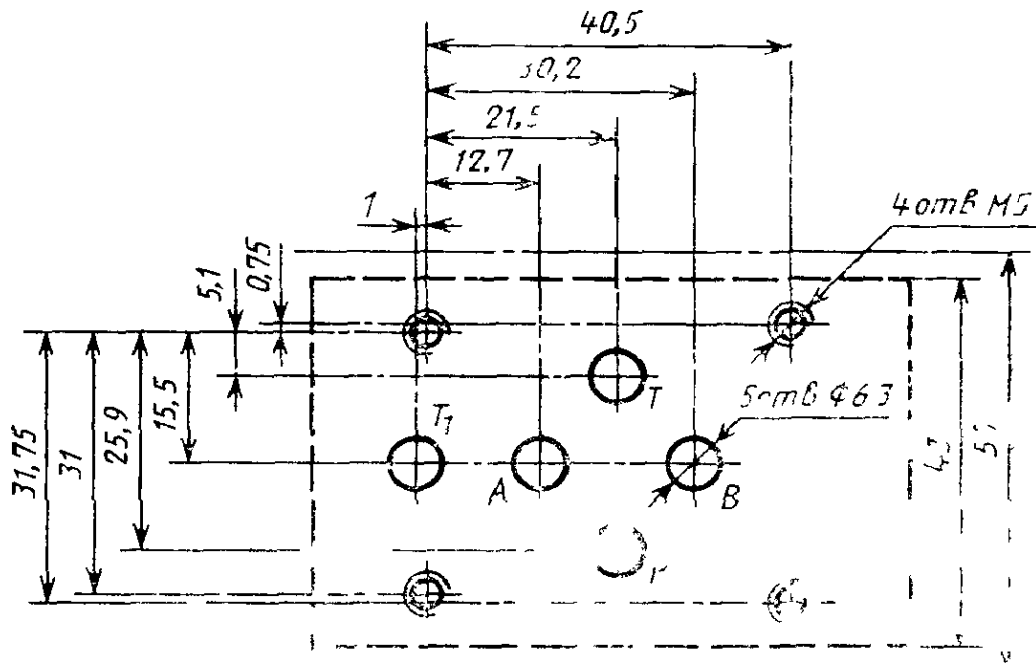
38



. 5

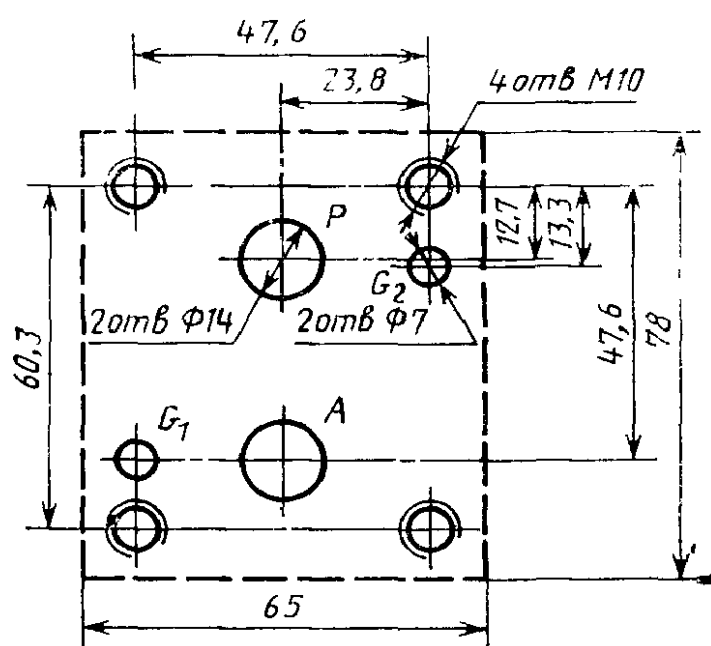
6,3 (E>

6)

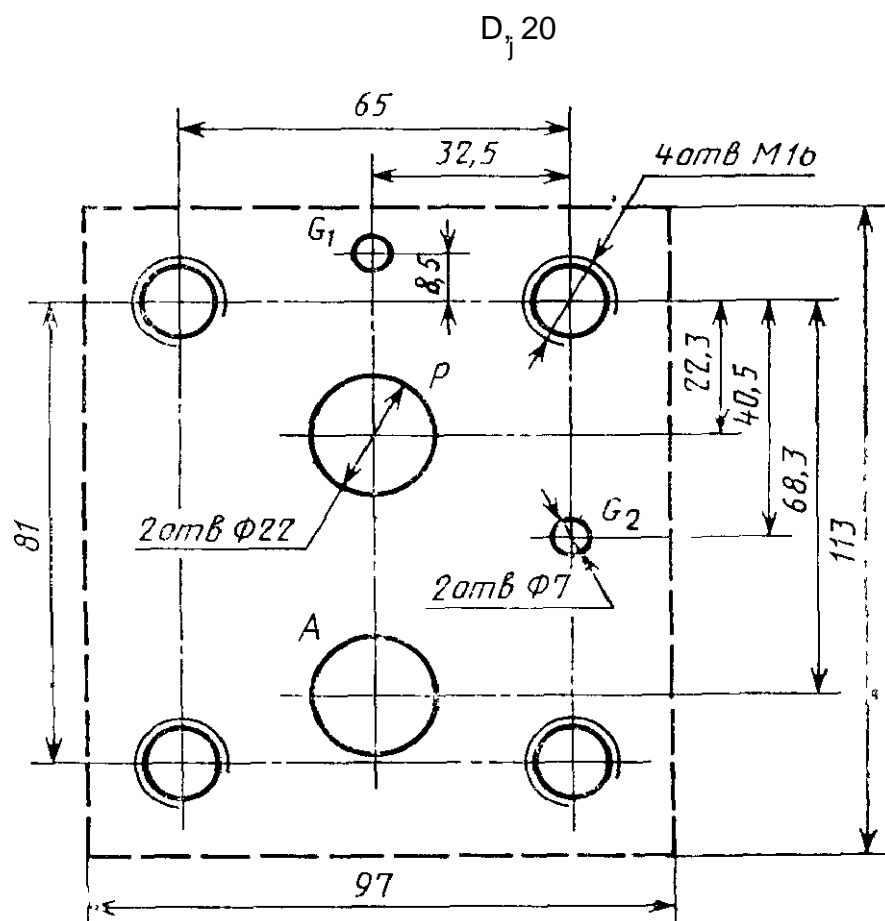


(, ,),
01.01.90

$D_{\%} 10$

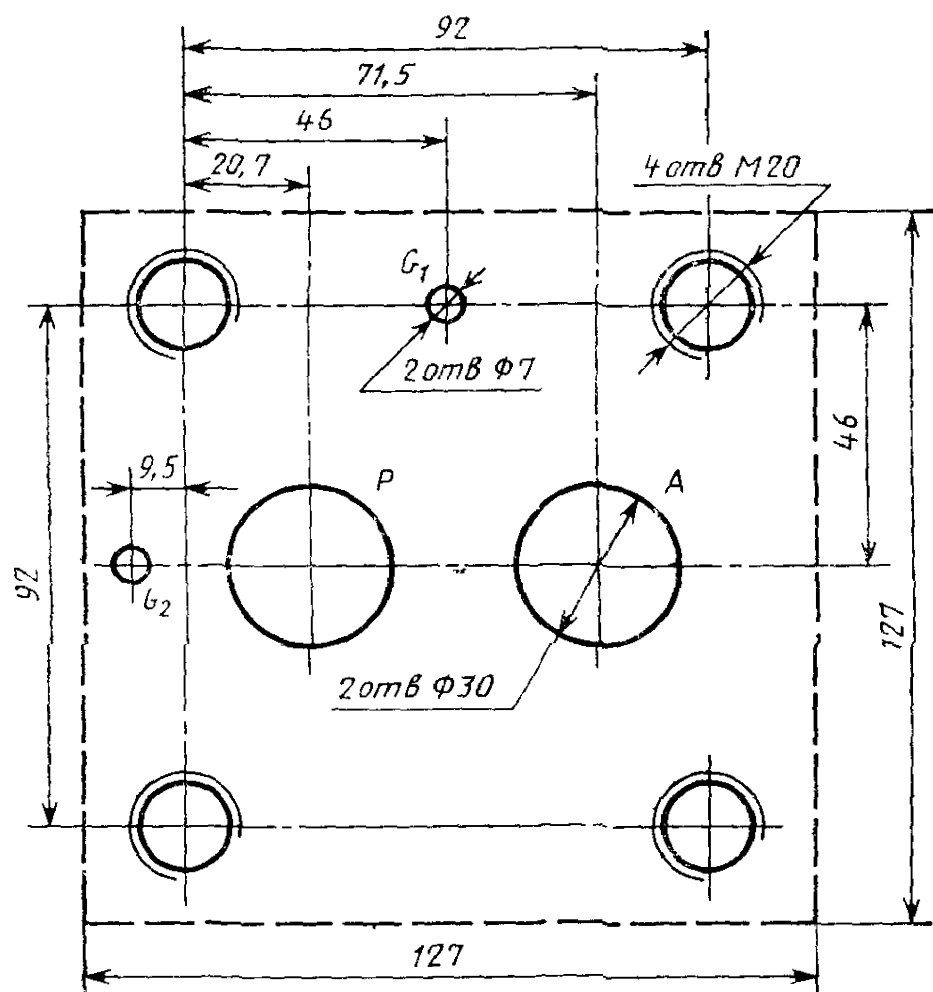


. 1



. 2

Dy 32



. 3

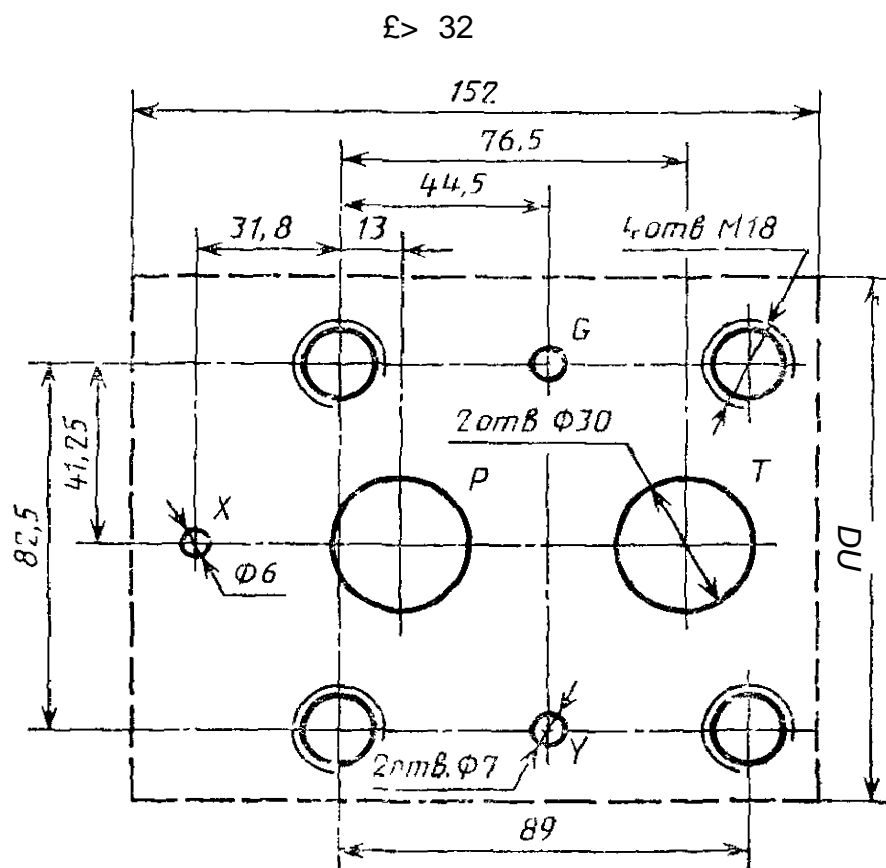
Technical drawing of a rectangular plate with the following dimensions and features:

- Overall width: 80
- Overall height: 80
- Top horizontal dimension: 47,5
- Top horizontal dimension from left edge to center: 22
- Right vertical dimension from top edge to center: 47,5
- Right vertical dimension from center to bottom edge: 32,5
- Bottom horizontal dimension from left edge to center: 44
- Bottom horizontal dimension from center to right edge: 36
- Left vertical dimension from top edge to center: 47,5
- Left vertical dimension from center to bottom edge: 32,5
- Features:
 - Top center: Hole G
 - Top right: Hole F
 - Center: Hole P
 - Bottom center: Hole K
 - Bottom right: Hole L
 - Left edge: Hole X with diameter $\varnothing 5$
- Annotations:
 - 40mm M12 (pointing to the top right corner)
 - 20mm $\varnothing 14$ (pointing to the center hole P)
 - 20mm (pointing to the bottom center hole K)

Черт. 4

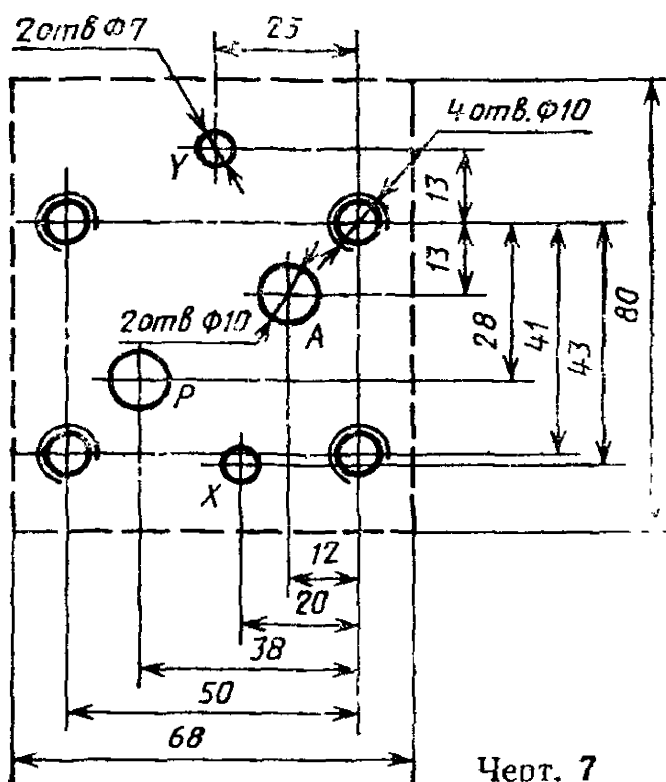
Technical drawing of a rectangular plate with the following dimensions and features:

- Overall width: 118
- Overall height: 102
- Left side height: 70
- Top edge distance from left: 35
- Top edge distance from center: 55,5
- Top edge distance from right: 23,0
- Top edge distance from center: 33,2
- Top edge distance from right: 11
- Bottom edge distance from center: 66,7
- Holes and features:
 - 4cm8 M16 (4 holes)
 - 2cm8 $\Phi 22$ (2 holes)
 - 2cm8 $\Phi 7$ (2 holes)
 - $\Phi 6$ (1 hole)
 - Point X (1 point)
 - Point Y (1 point)
 - Point P (1 point)



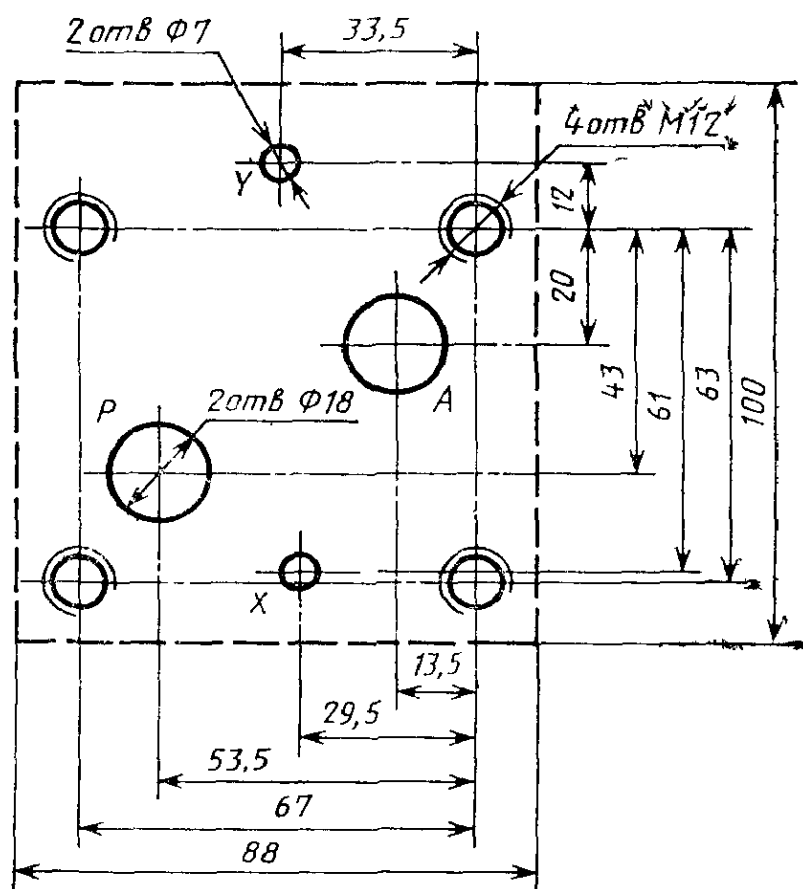
Черт. 6

(
) $D = 10$

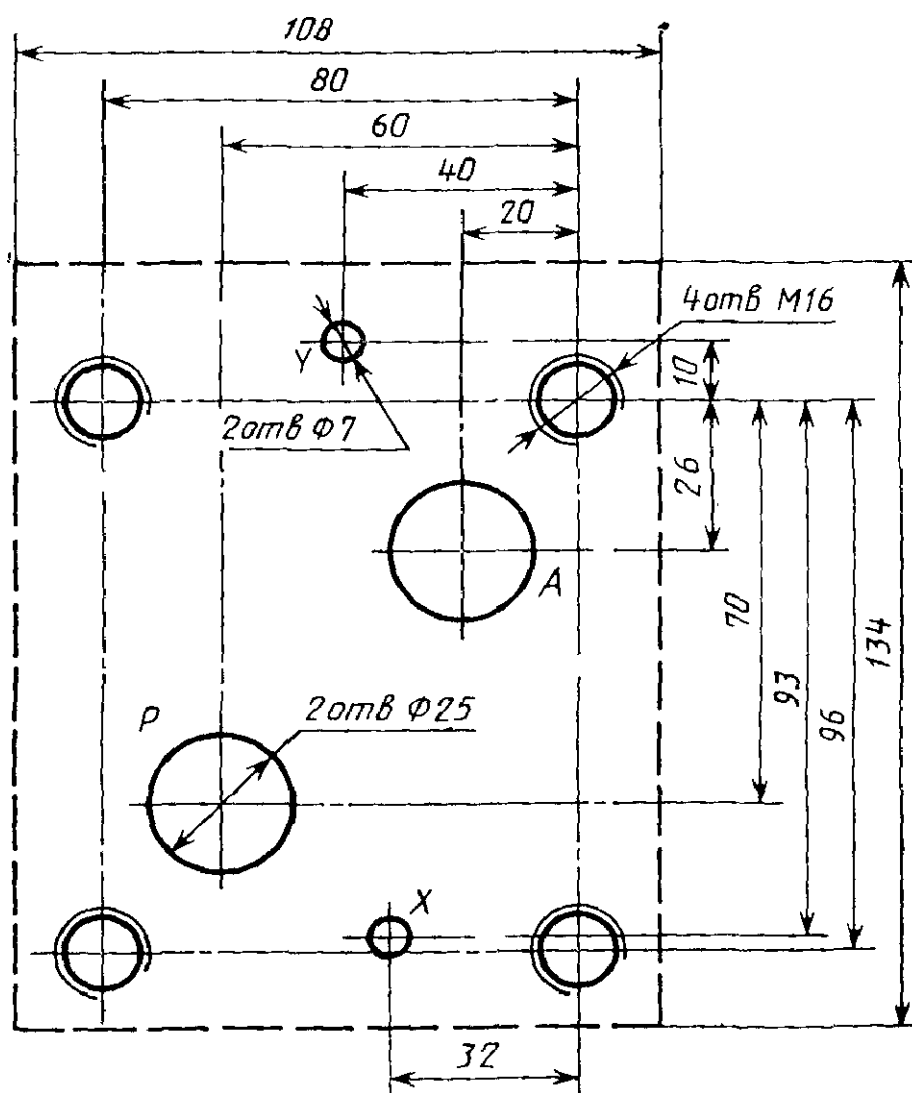


Черт. 7

()
 $D = 20$



(
Dy —32



Черт 9

1

2

. .
 . .
 , .
 02.06.86 , . 34.07:66 2,0 % . 2,13 . - . 1,38 .- . .
 . 16000 5 .
 « » , 123840, , ,
 , 3. , 256, 1451