

()
INTERSTATE COUNCIL FOR STANDARDIZATION, METROLOGY AND CERTIFICATION
(ISC)

33189
2014

-



2016

», 1.0—92 «
» 1.2—2009 «
», , »
1 - « -
2 » { « ») 524 « -
3 »
(22 2014 . Ns 73-) ,

:

» < 3166) 004—97	(3166) 004-97	
	2 AM BY KZ KG RU TJ	

4 17
2015 . 95- 33189—2014
1 2015 .
5 -
«
» « ,
6 8

1) « (-
— « , -
() ».
« ».
,
—
(www.gost.ru)

1	1
2	1
3	2
4	2
4.1	2
4.2	3
4.3	3
4.4	4
4.5	-	5
() 1.	8
() 2.	16
() 3.	18
() 4.	-	21
() 5.	23

Федеральное агентство
по техническому регулированию
и метрологии

Федеральное агентство
по техническому регулированию
и метрологии

Федеральное агентство
по техническому регулированию
и метрологии

Transmission tooth gears of the traction mam railway stock.
Scale of macro- and rmcrostructure standards

— 2015—07—01

1

(—)
(—), , (—) -
(—). (—): , (—) -
,
.

2

3.1109—82

1763—68(3887—77) .

2999—75 .

5639—82 .

8233—56 .

9012—59 (410—82. 6506—81) .

9013—59 (6508—86) .

9450—76 .

16530—83 .

20495—75 .

30803—2014 .

« ,

1

() ,
() ,
() ,

33189—2014

3 ,

3.1 3.1109. 16530 20495.

3.1.1 : — :

3.1.2 : , .

3.1.3 : .

3.1.4 : ,

().

3.1.5 : , ,

3.1.6 :

3.1.7 :

3.1.8 : , .

3.1.9 :

3.1.10 : -

3.1.11 : ,

3.1.12 : 100 %.

3.1.13 : , ,

3.1.14 : ,

3.1.15 : ,

3.1.16 : -

3.1.17 : -

3.2 :

100'... 500' — ;

/? — , .

4

4.1

4.1.1 - () ,

30803.

4.1.2 . , 1:

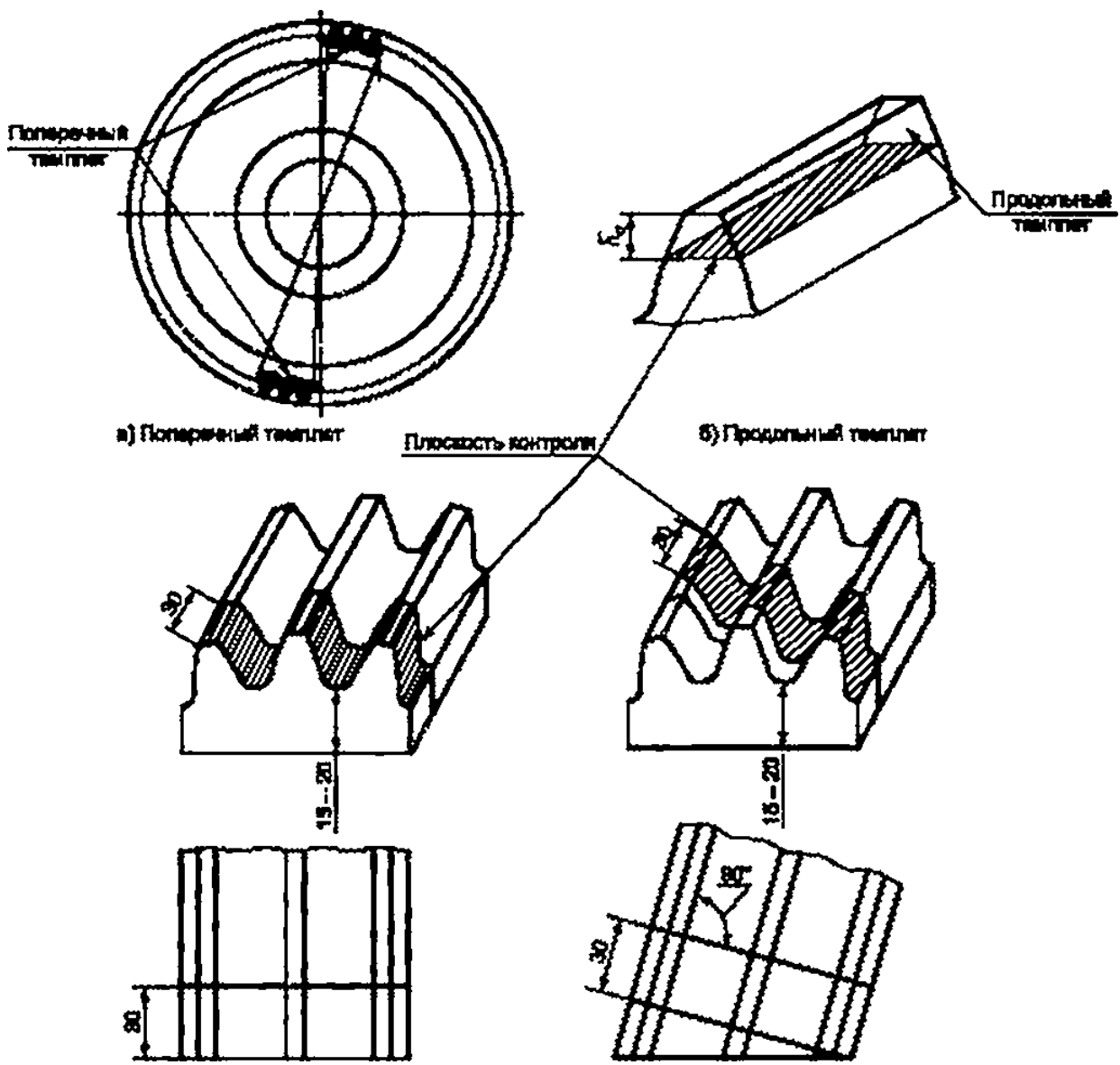
- . 30 -

• ().

4.1.3

8233

(. 1).



)?) — 1—

1—

4.2

4.2.1

30—35 %-

4.2.2

4 %-

4.3

4.3.1

1—10

1 (

.1— .10).

4.3.2

8

1. 10 ,
(. 1 — .10).

.

.

,

() :

- *6...7 — (2±0.5) ;
- = 8...9 — (3±0.5) ;
- =10...12 — (4±1) .

1.5 .

4.3.3

500'.
100'.
.1— .8).

1—7 2 (.

(. 1. .1. .2). (. 2. .)
(. 3. .4)

5 1 5639 , 4 5
(. .5 .6). — 6 7 (. .7 .8).

4.3.4

9013 (2999 ,

2999.

2 .

48 54 HRC.

55 HRC 30803.

9013.

255 302 9012

26 32.5 HRC 30803.

4.3.5

9450

100 %,

10 %.

4.4

4.4.1

200- 500*

1—6 3

(. .1— .6).

1 — -

			-	
1	(1	- 30303	
		2	- ' 4 7	
		3	30803 '	
		4		
		S	()	
		6	-	
		7	-	
		6		
		9	- -	
		10	- , -	- -
		11	- 30803	
8				
2	-	1	-	
		2		
		3		
26	-	4	- 5	
		5	-	
		6	- 5	
		7	(-)	

1

			-	
3	-	1	,	
		2		
		3		
		4	,	
		5	,	-
		6		
4	-	1	.	-
		2		-
			10 % ,	
		4	200'	
5	-		10 % ,	-
			200'	-
		1	,	
		2		
5	-	3		
		4	,	

()

1.

1

30803.

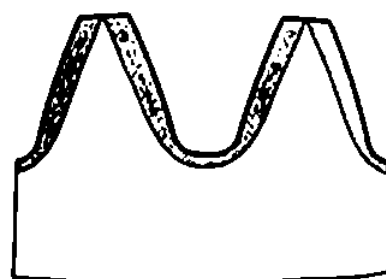
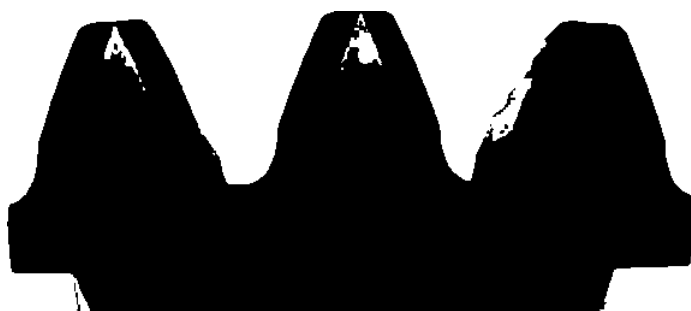
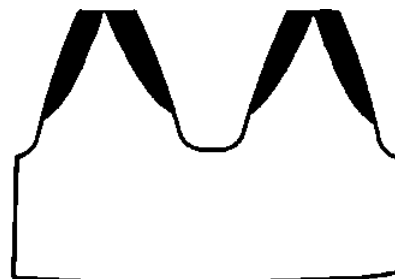


Рисунок А.1

2

4

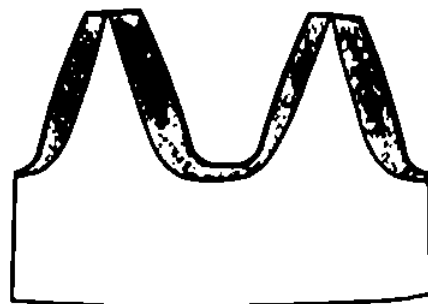
7



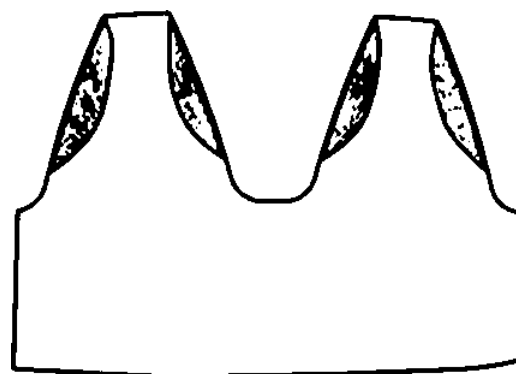
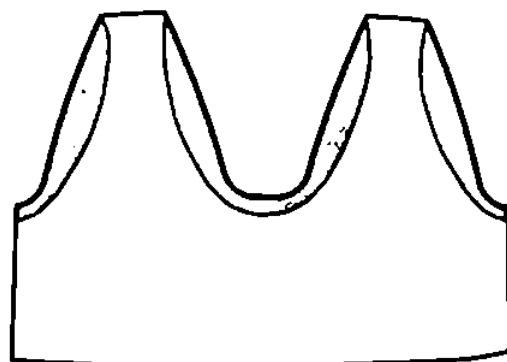
.2

3

30803.

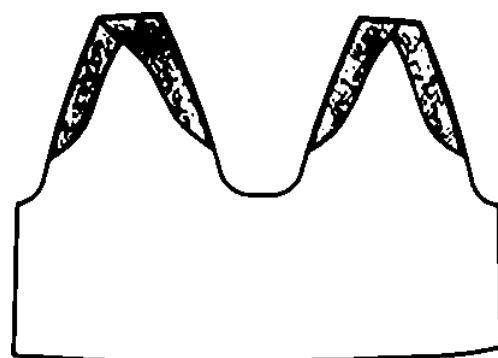
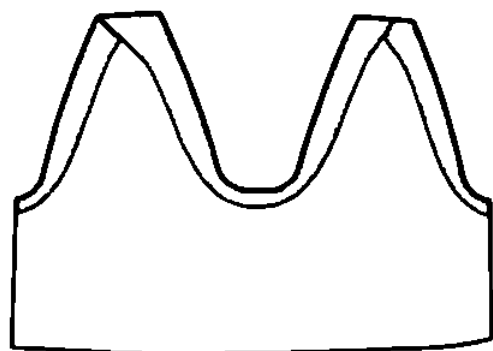


4



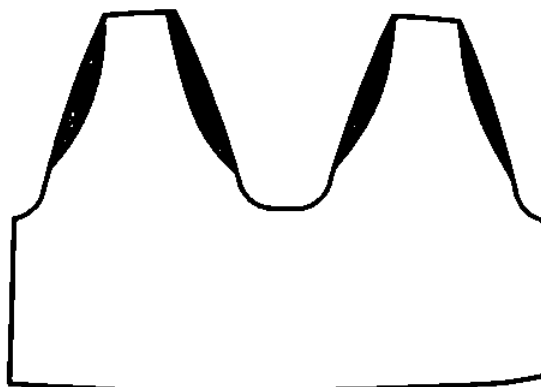
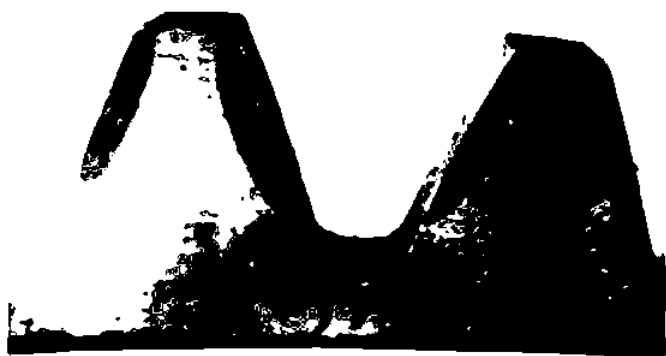
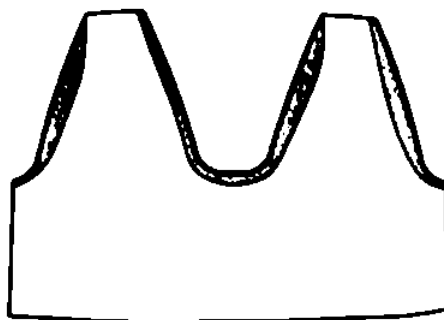
.4

S



.5

6



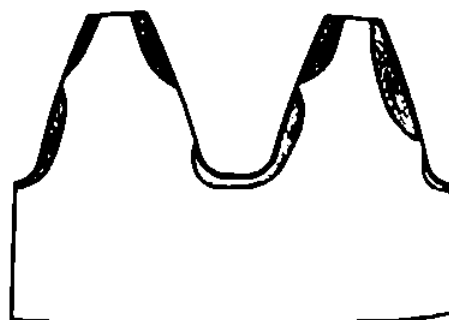
.6

7

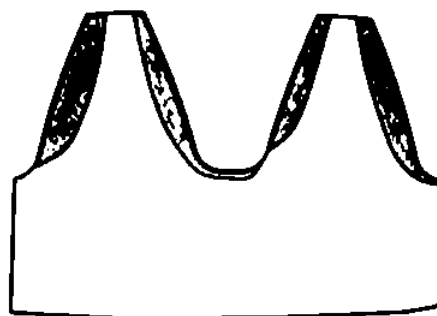
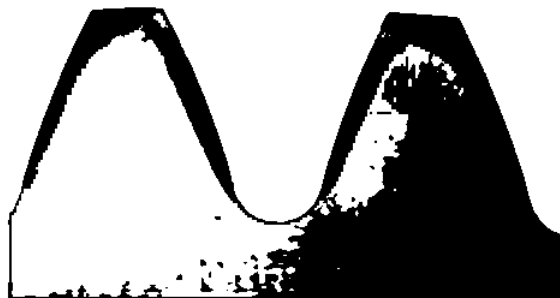
),

).

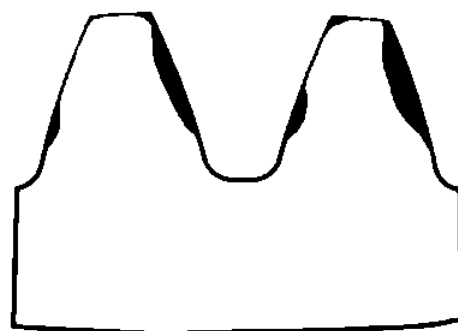
)



a)

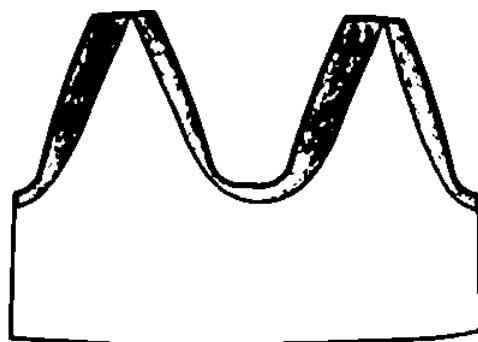
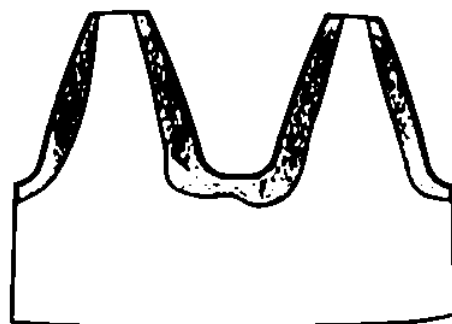


б)

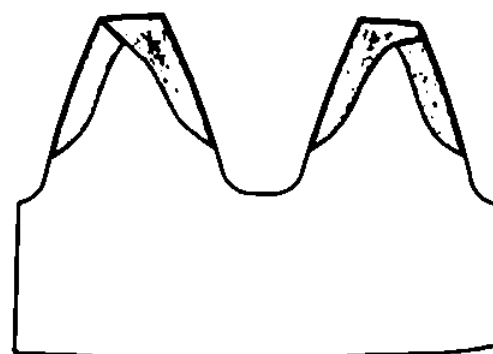
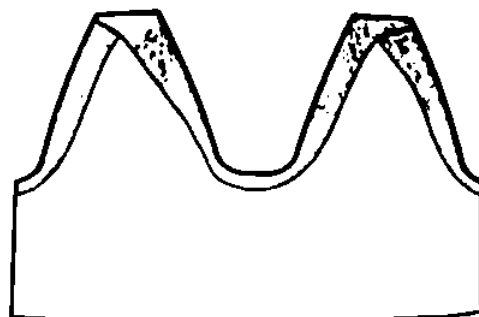


в)

.7

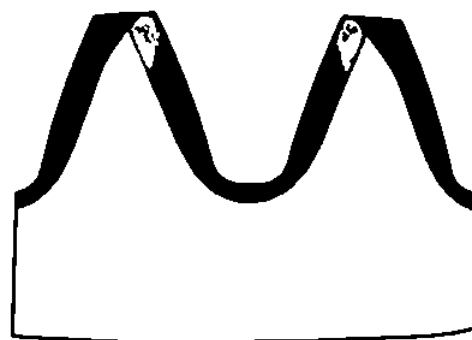


9



.9

10



.10

11

30803.



.11

()

2.

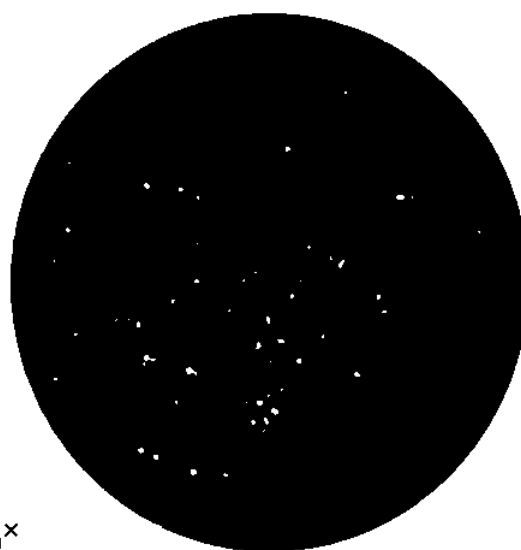
2

1



500^x

.1

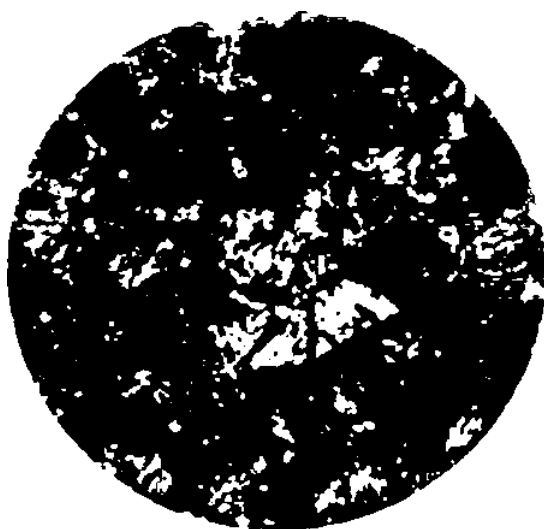


500^x

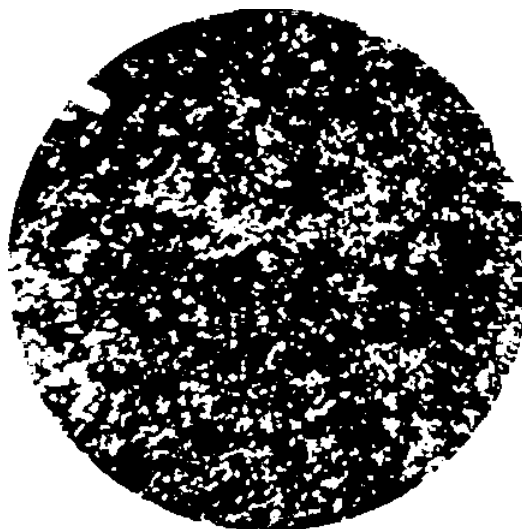
.2

2

3



500^x



500^x

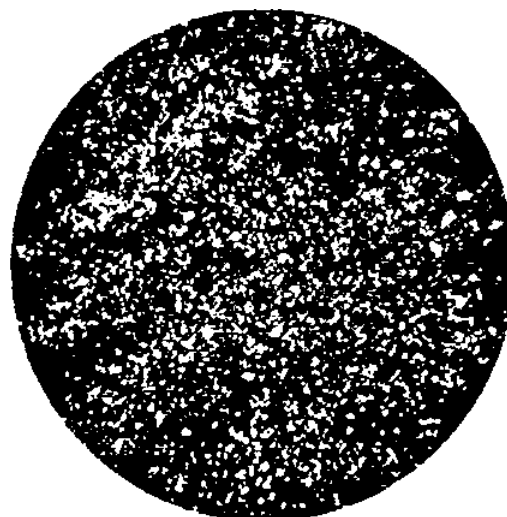
.4

4

5

100^x

.5

100^x

.6

6

7

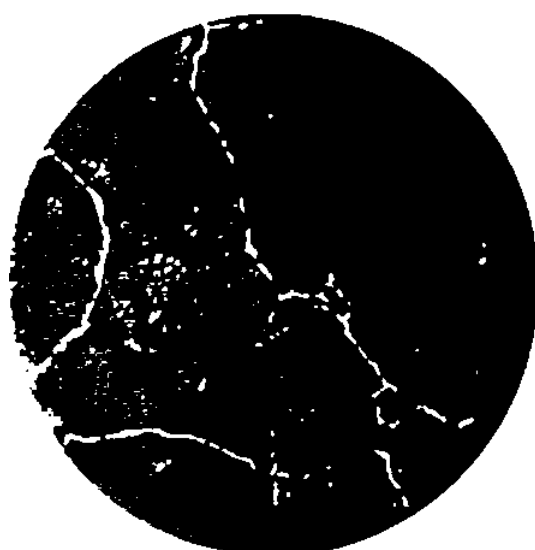
100^x

Рисунок Б.7

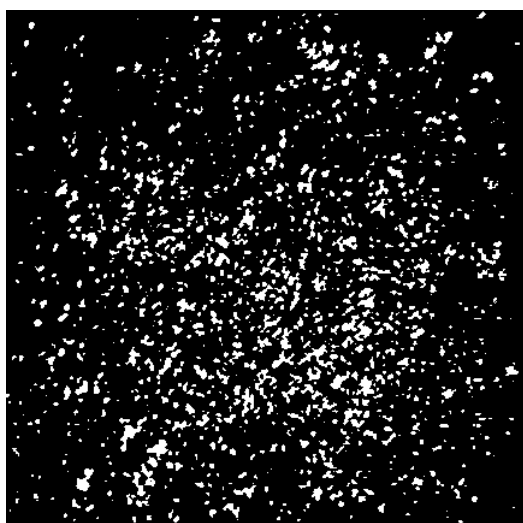
100^x

Рисунок Б.8

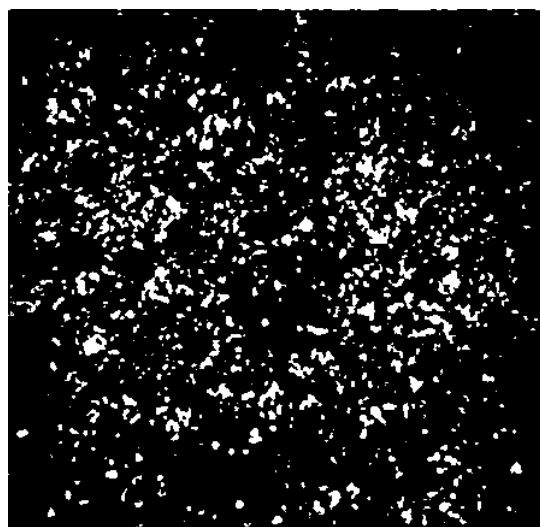
()

3.

1



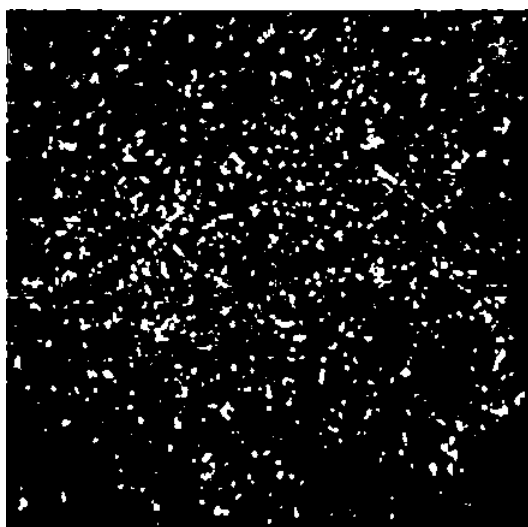
200^x



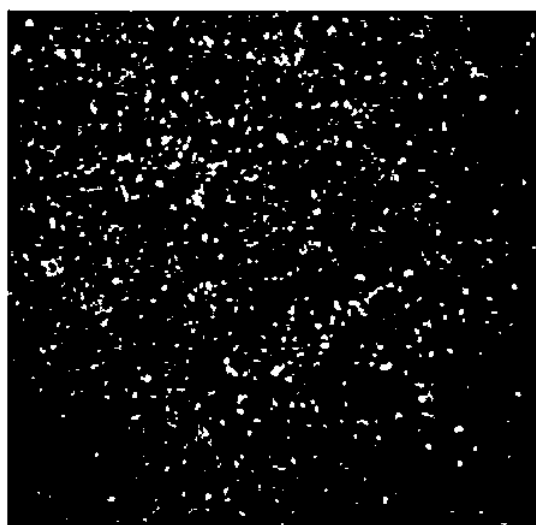
500^x

.1

2



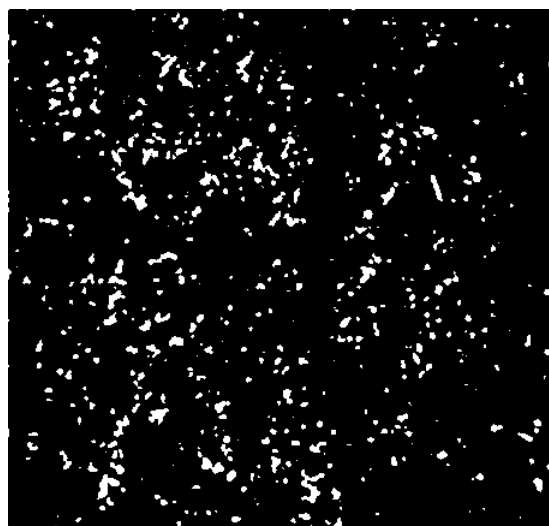
200^x



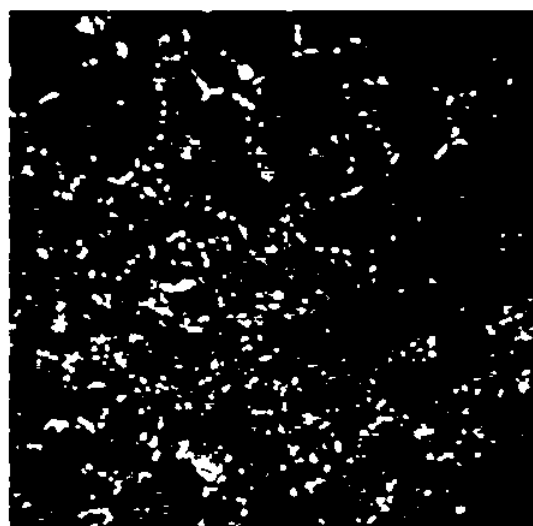
500^x

Рисунок В.2

3



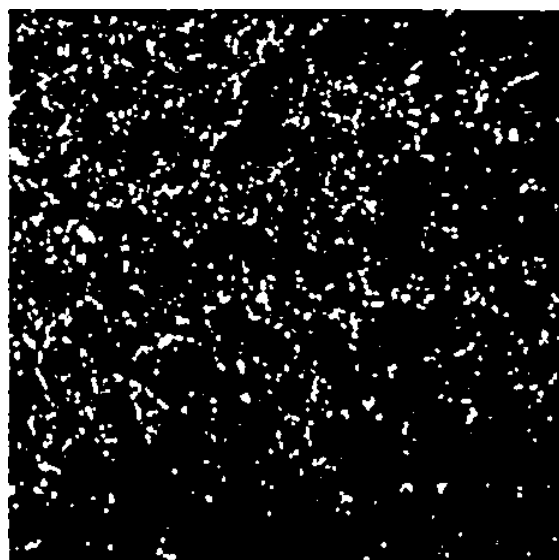
200^x



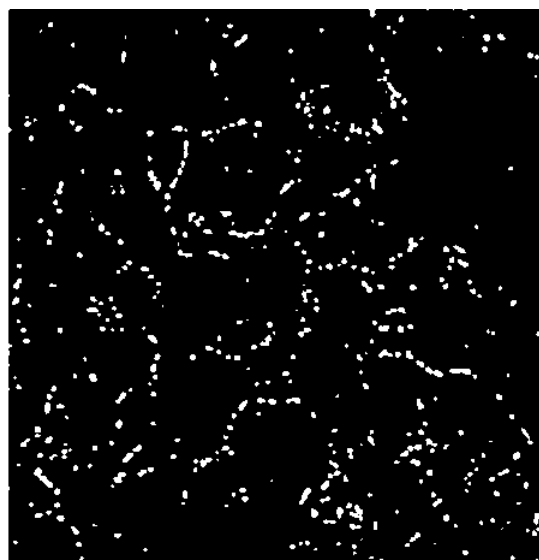
500^x

Рисунок В.3

4



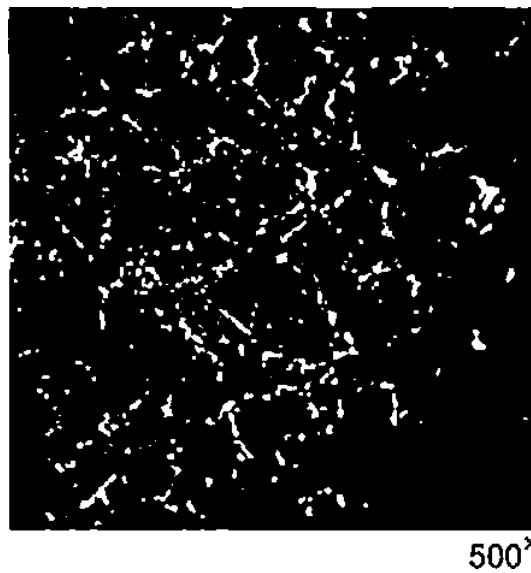
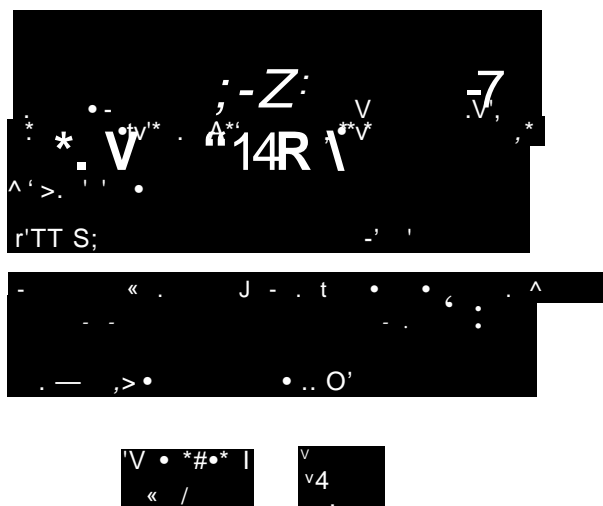
200



500

.4

5



8.5

6

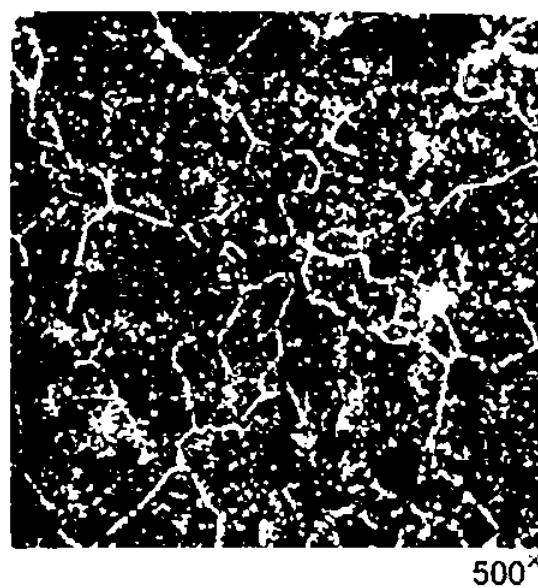
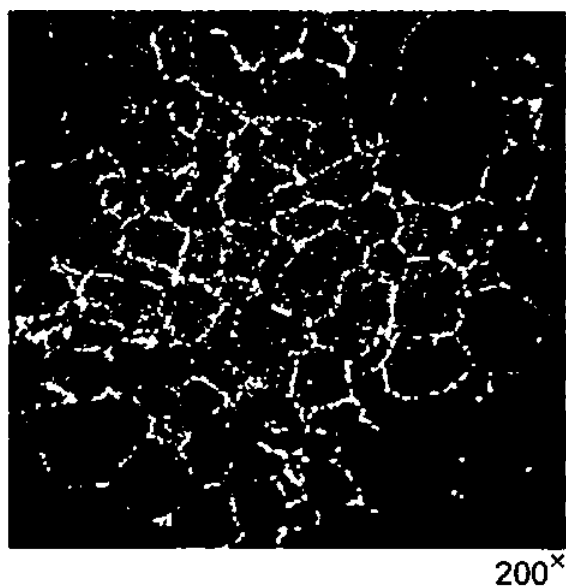
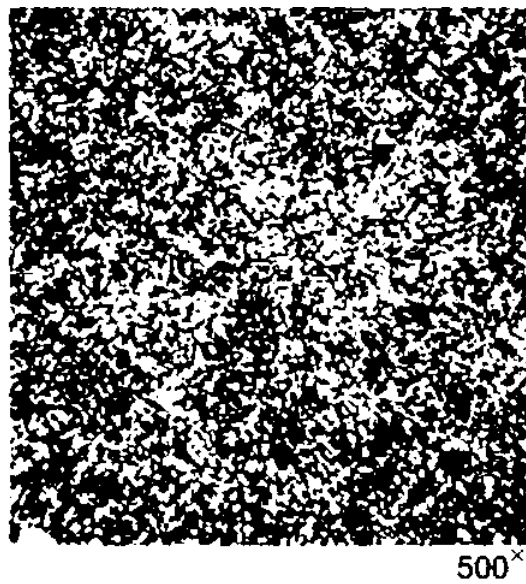


Рисунок В.6

()

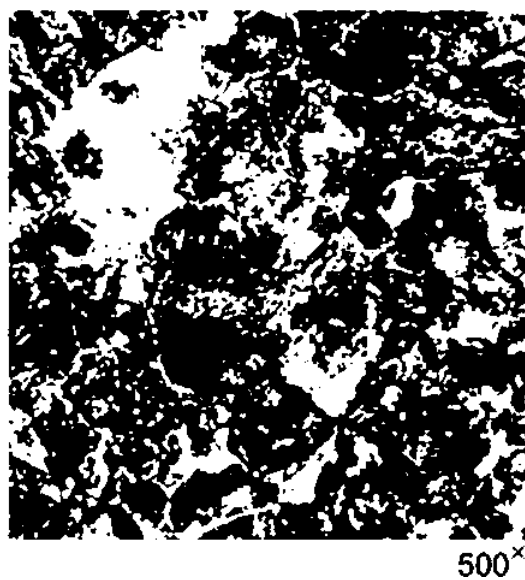
4.

1



.1

2

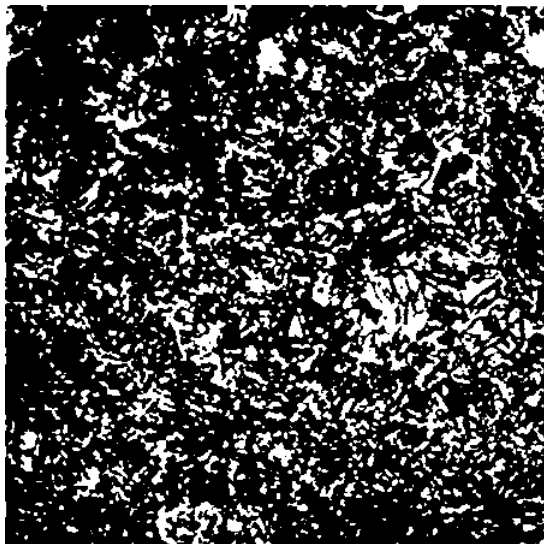


.2

3

10

200\



200



500^x

4

10 %

200\



200^x



500^x

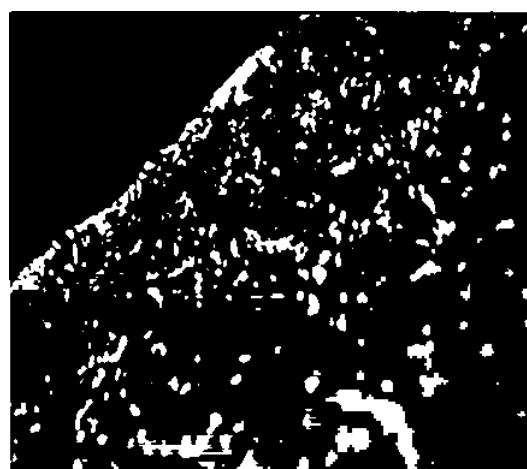
Рисунок Г.4

()

5.

1

2



100

100^x

.1

.2

3

4



500^x

.4

100

45.040

10.02.2016. 09.03.201 60>64j£.
 . . . 3.26. .- . . 2.80. 34 . . 700.
 « » 123935 . , 4.
 www.gostinfo.Tu infoQgostinfo.iu