



9391—80

{ 2947-81 2952-81)

9391—80*

Sintered Hardmetals. Methods for determination
of porosity and microstructure

(2947—81
2952—81)

9391—67

1980 . 2191

19

01.01.83
01.01.88

-

,

l.

2947—81

2952—81.

(, . 1).

1.

1.1.

20559—75.

2.

2.1.

,

2.2.

2.

*

1982 .; 1985 . 3963 13.10.82 (1—83)

©

, 1985

3.

3.1. , -
 , ,

3.2.

2.

4.

4.1. 10 -
 -

100 200 .

—

(. 1, 2) * .

0,04.

4.1.1.

10 25

100 .

(. 1

5).

, 0,02, 0,06.

(

4.1.2.

30

100 .

, (. 3).

, 0,08; , 0,4.
 4.1.3.

50

100 .

D (. 4).

D ,
 , D 0,2; D 0,4.
 4.1.4.

*

4.1.5.

4.1.5.1.

25

100

$$(1 \quad 2)^{\wedge} : 25-50$$

$$51-75 \quad (\quad)$$

4.1.6.

100

80

50

50

100

1 2.

$$1 \quad 2, \\ 1 \quad 2,$$

$$(1 \quad 2) : 51-75; 76-100 \quad (\quad)$$

100;

1 2.

55

80

50

3 (. 1).

4.2.

4.2.1.

100

200 .

$$1 (\quad) . 5, 6$$

2)

2 (. 1

1 2,

4.2.2.

1).

*

4.2.3.

4.3.

4.3.1.

1 (.) .

)

)

	-				
1	20%- .	18-20° , 2-3 . .) .)] . . 0- 	, . . .

-15-20°, - 0-

0-

3

20%-

! J8-20° ,

2-

3

3-4

0-

t)

2

a-

®

[

[

 J8-20° ,

 15-

 0-

 5

-					
5		450—500^0, 15	<p>«</p> <p>Р-</p> <p>4 5,</p> <p>5</p>	<p>«</p> <p>Р-</p>	

« », « » . -
] -
 3 (. 2, 3, 4). (-
 100), 1500 -
 10 , . -
 4.4. (J- () -
 4.4.1. (3- 1 (.) . -
 1250—1500 , 10 -
 (3- (, -
 10 (3- (, -
 3, . 5, 6). 5 -
 (3- . -
 4.5. -
 () -
 4.5.1. a- 2, , ' , -
 3 (.) . 3 (. 7—10). -
 -, 1250—1500 , -
 400—500 . -
 4.5.2. a- - -
 - 5. * 5,
 3 (' . 11, 12). -
 4.5.3. a- (. 1, 2, 3 -
 7) 10 , -
 a- 1:100, -
 , 100 -
 (. 7, 8 3); -
 200 — (. 9 -
 3) (. 10 3) -

($\pm 0,5$).

1	0,5—1,5	
2	. 1,5	2,5
3	. 2,5	3,5
4 3,5	. . .

a-

7) , (. 1, 2, 3

a-

(, . 1).

4.6.

4.6.1.

4,

5 (.).

(. 13, 14).

(3, . 15, 16).
1250—1500

4.5.3.

(. 4, 5, 6

7)

(, . 1).

4.7.

a-

(
4.7.1.

10

a-

4872—75
4.7.2.

4411—79.

a-

4.5.2.

100 200 .

. 4.5.1

-

.

a-

3 (. 17).

5.

5.1.

,

-

-

.

]

a-

5.2.

50

(1 2)

,

-

. 4.1.6.

.

1 2,

,

.

1 2,

,

-

-

5.3.

-

4.

- - Y-)	(, Ni) - (Ti, W) ; (Ti, W,) . , -

1.

1.1. ()

2 12.

1.2. -

,
.

1.3. -

3803 - 881

1.4. 0,6—0,8 / 2 (6—8 / 2).
1.5. 3803 -

9206—80, 14/10 40/28 14/10. 40/28 -
5962—67 -

1.6. 881

982—80) (— 7/5 7/5, /2 /2,
,
.

1.7. 1/0 (), 1/0

. 10 9391—80

1.8.

1.9.

100 .

1250—1500*.

1.10.
70—140 /
1.11.

; 881—700 / .

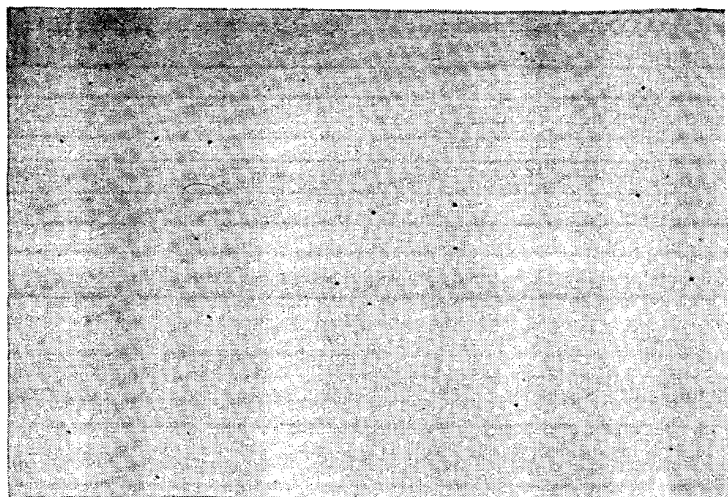
3803

2 .

3 .

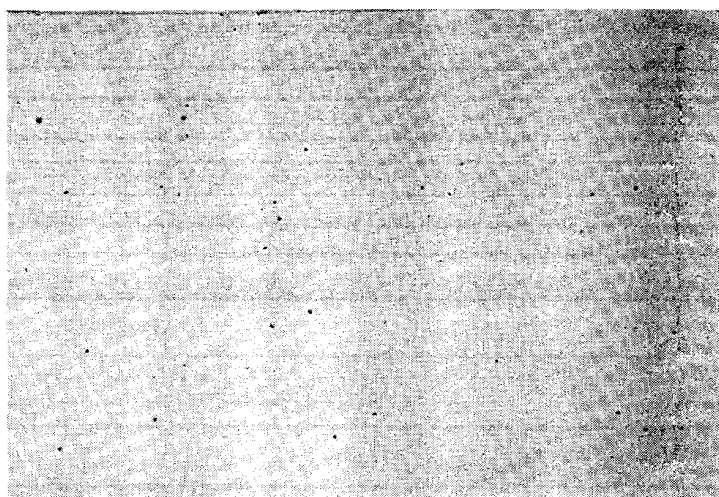
	1 D.E				« 50 (1 2),	, %
		51-75	76-100	too		
1						
2						

	, 1														1	CAWI01fTG				
	(• ,							1-												
	1	2	3	4	5	6	.	1	2	3	4	5	6	.						
1																				
2																				



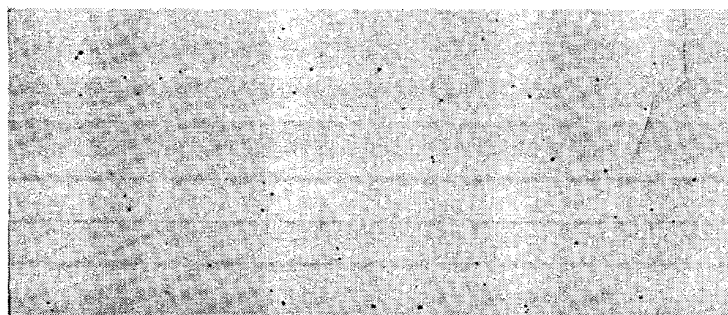
A - 1

0,02%



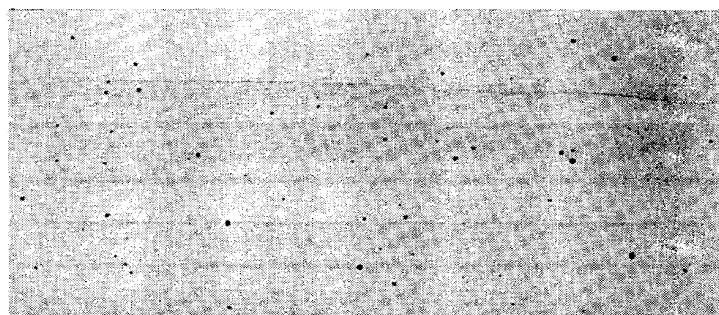
A - 2

0,04%



A - J

0,08%



-

0,2 %



-5

0,4%



-6

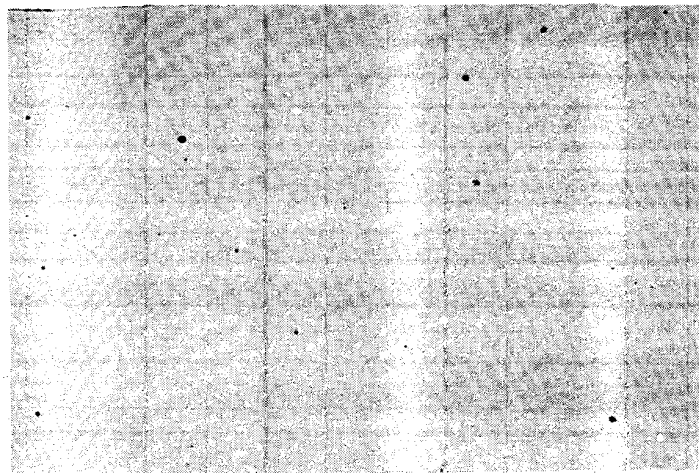
0,8%

200



-1

0,02%



- 2

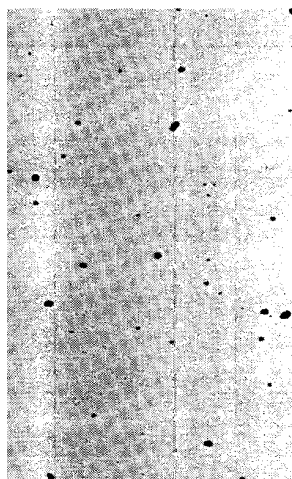
0,04%

- J

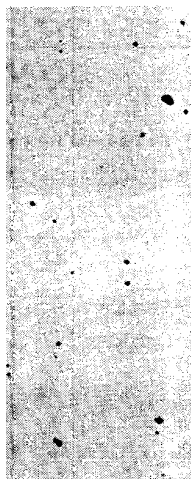
0,06%

~ 0

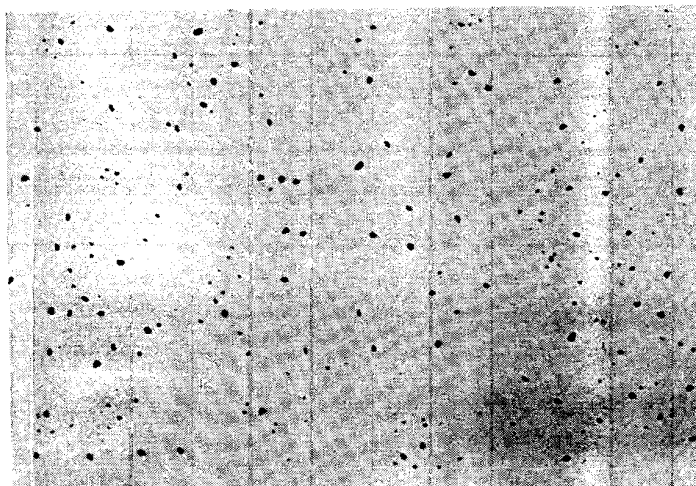
0,2%



-5

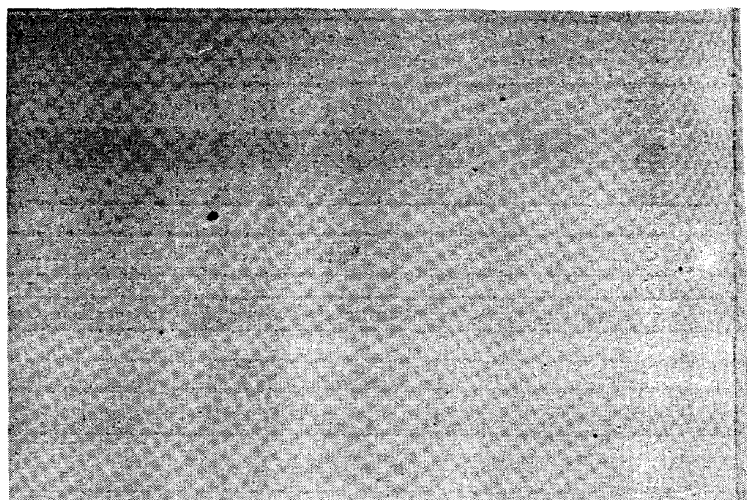


0,4%



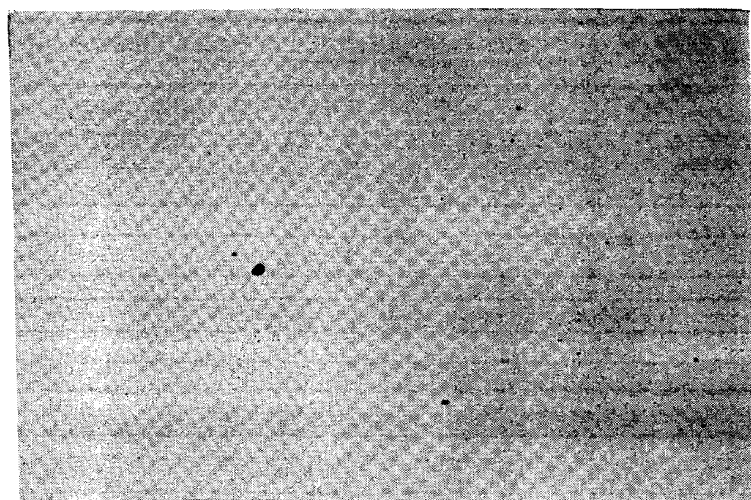
-6

0,8%



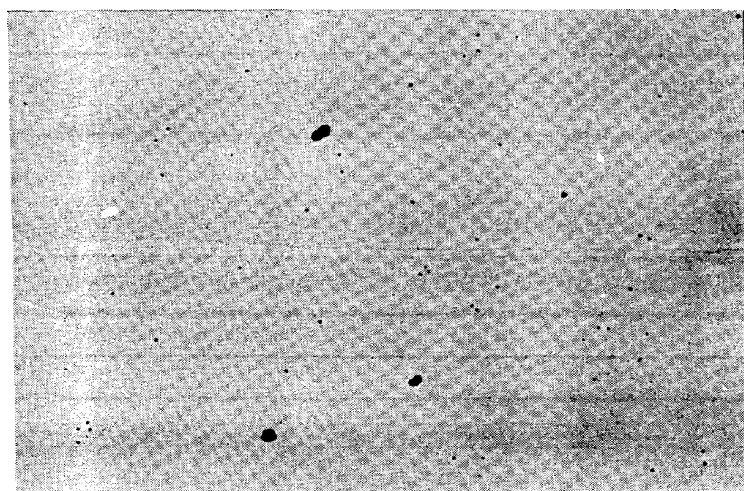
- 1

0,02%



- 2

0,00%

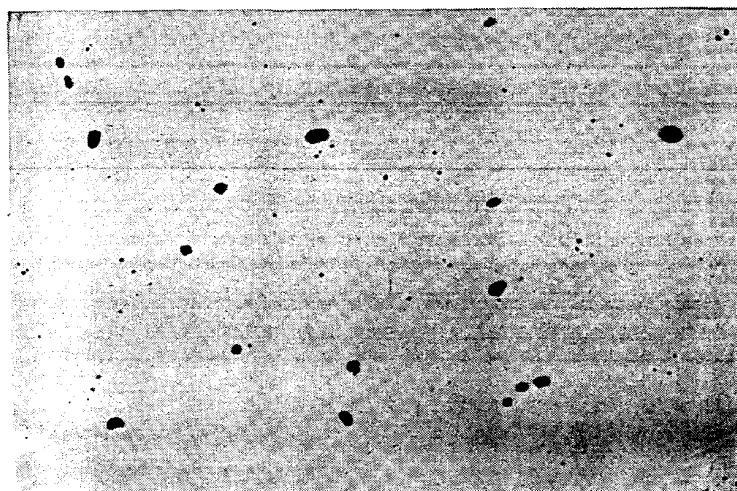


B - 4

0,2%

- J

0,08%

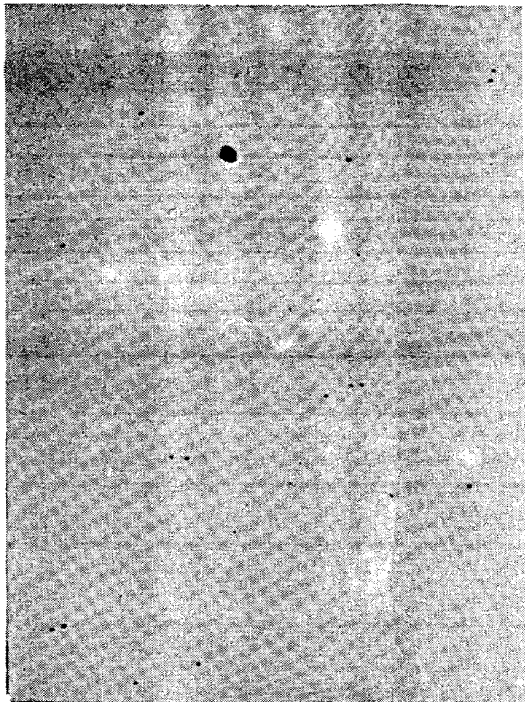


B - 6

0,8%

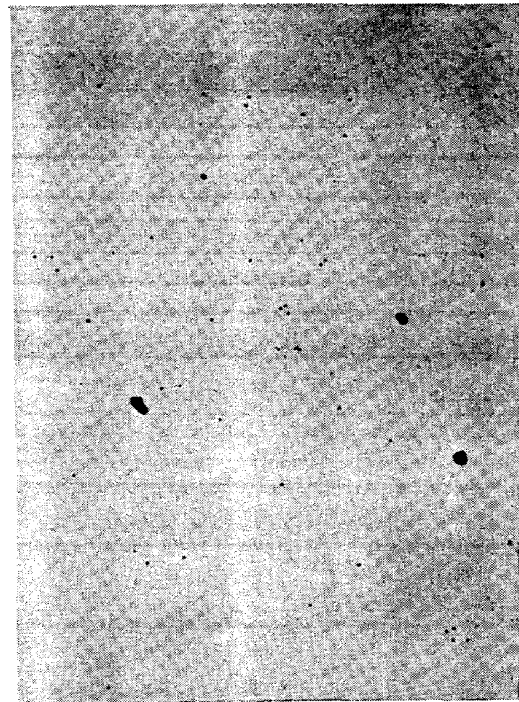
- 5

0,0%



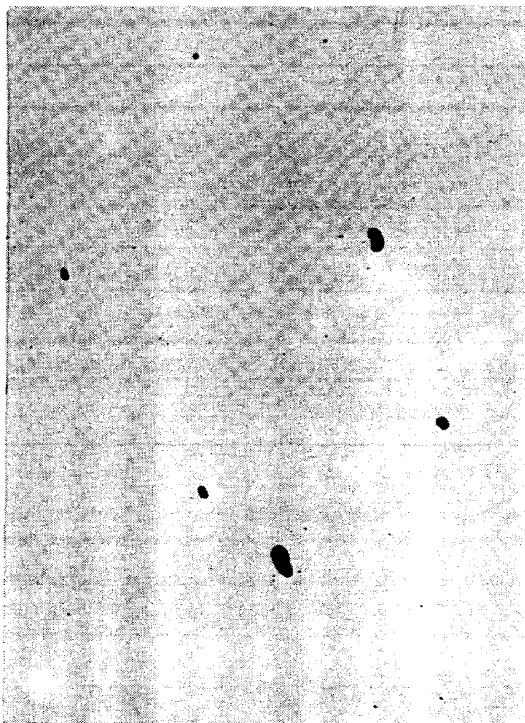
D - 1

0,1%



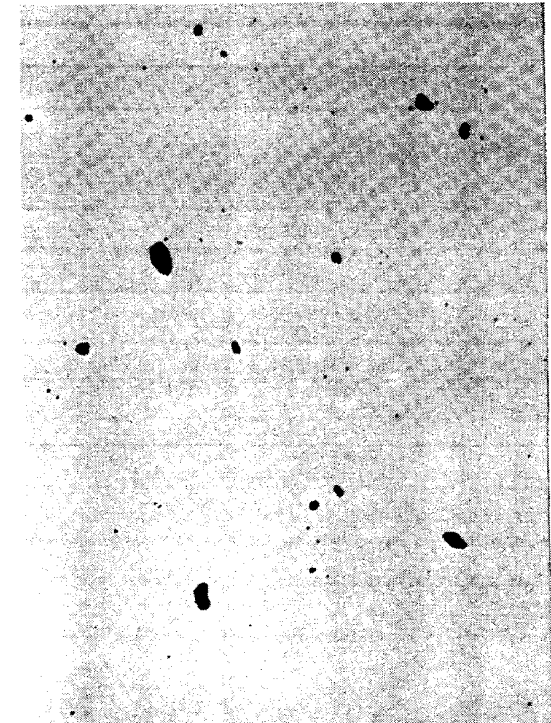
D - 2

0,2%



- 3

0,4%

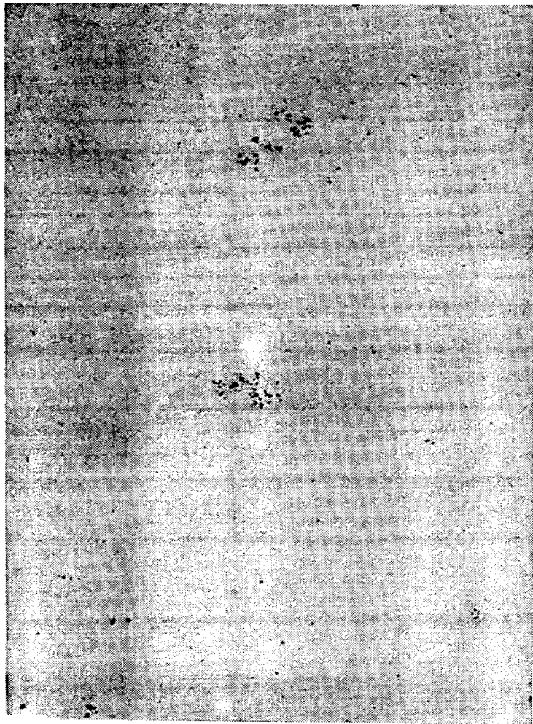


-

0,8%

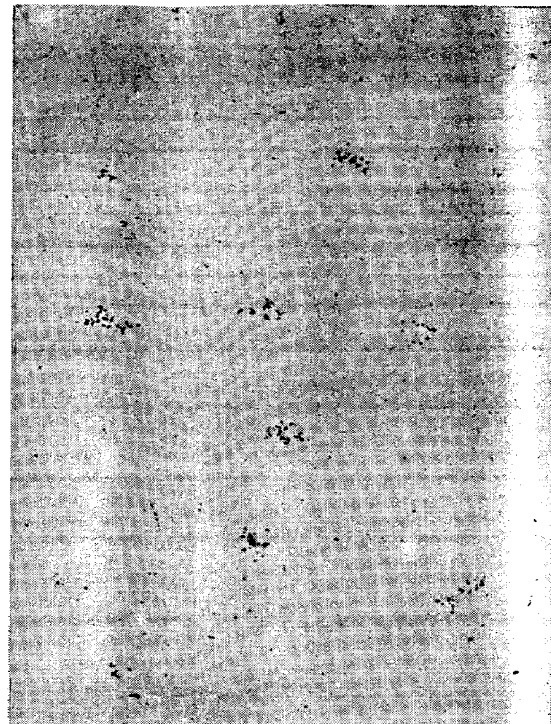
1

X100



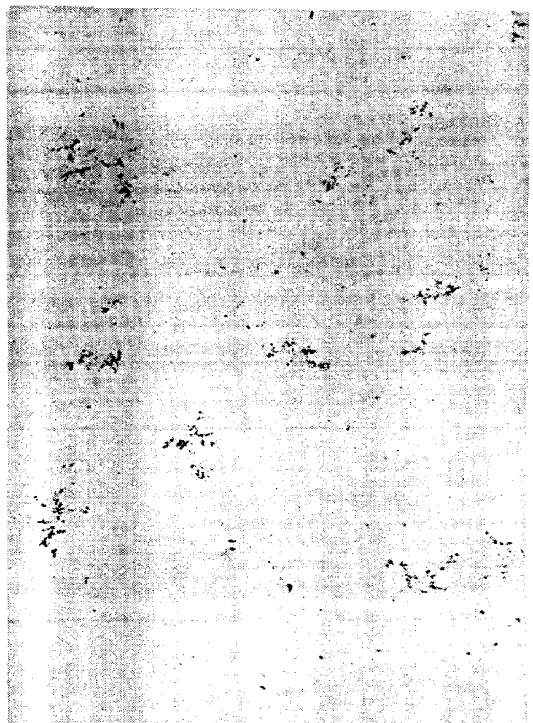
C - 1

0,1%



C - 2

0,2%

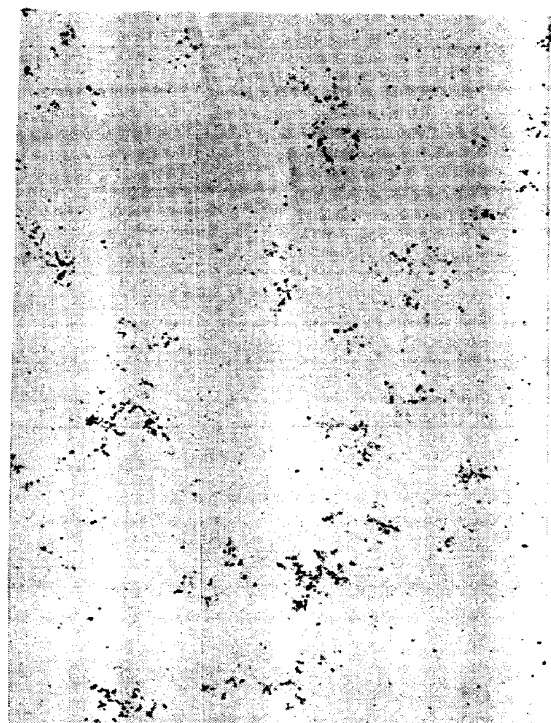


- 3

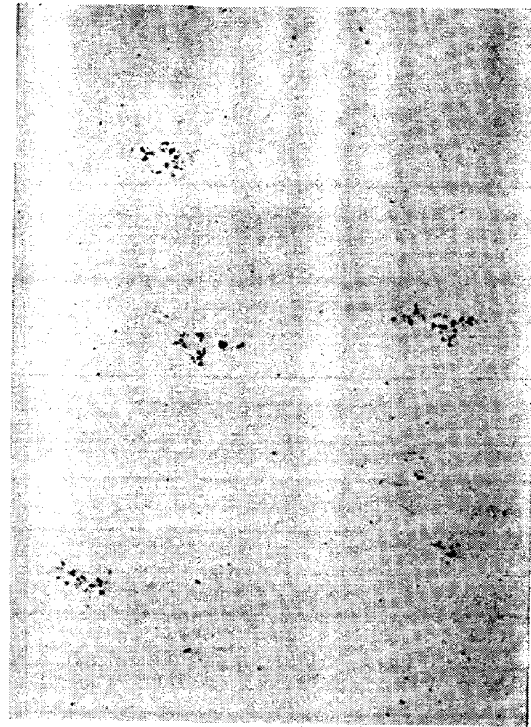
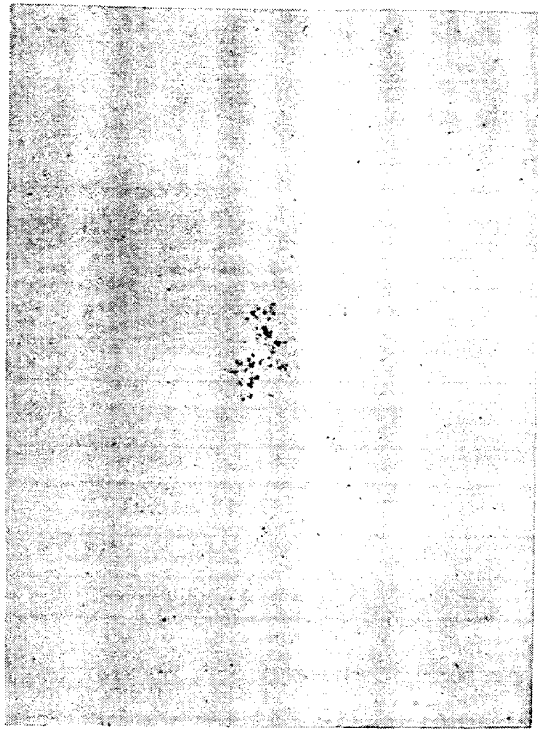
0, %>

- 4

.5



0,8%



-1

0,1%

-2

,

• • •

• '1

// •

• V^i

-V-.'

• , •

* _

.

! „ * -

•

? S..

-J

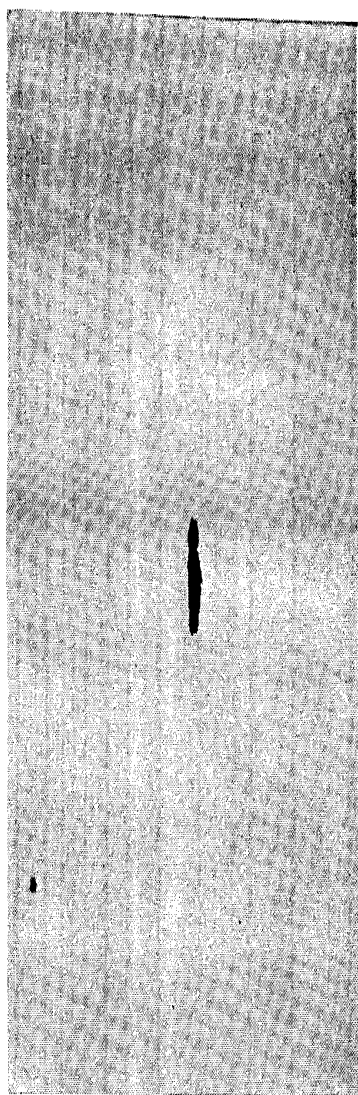
0,0%

#<?%

. 6

Крупные поры

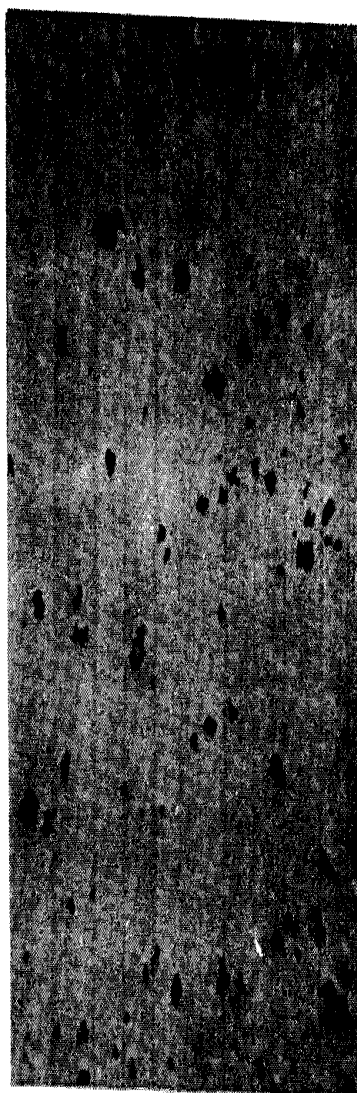
X100



Черт. 1

Фаза типа η формы «озерков»

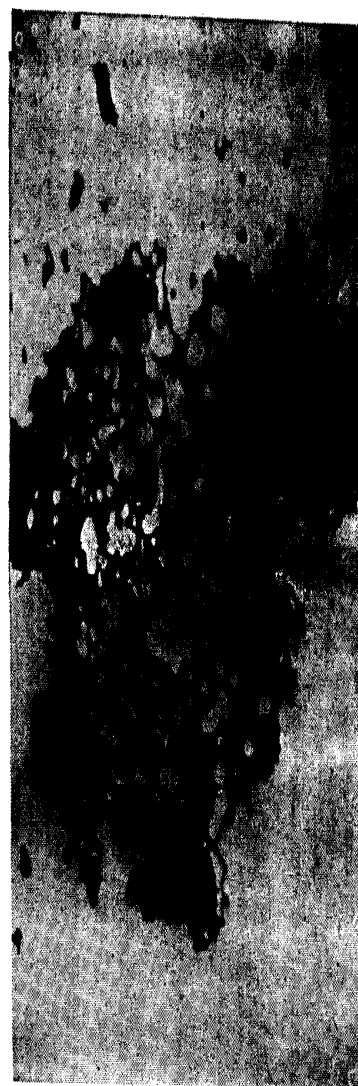
X1500



Черт. 2

Фаза типа η формы «кружев»

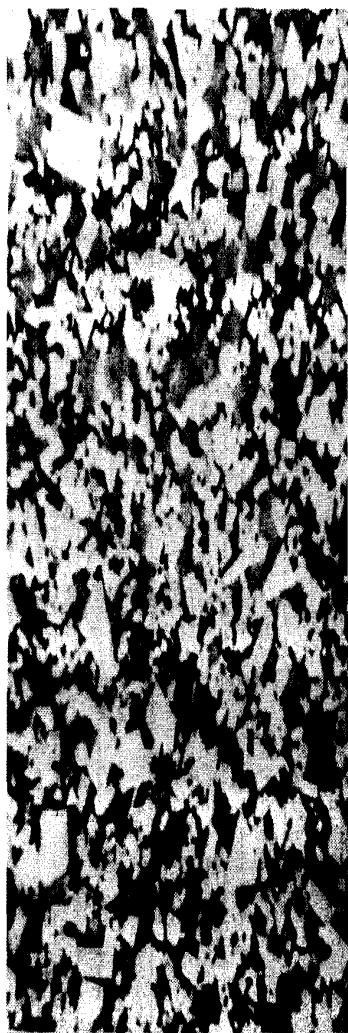
X1500



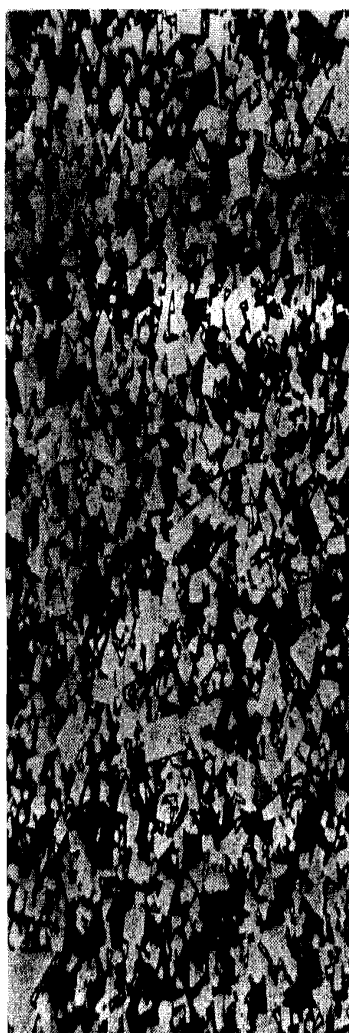
Черт. 3

(2 3)

1500



.12



,13



.14

«кружев»

X1500

Фаза типа η по границам раздела фаз

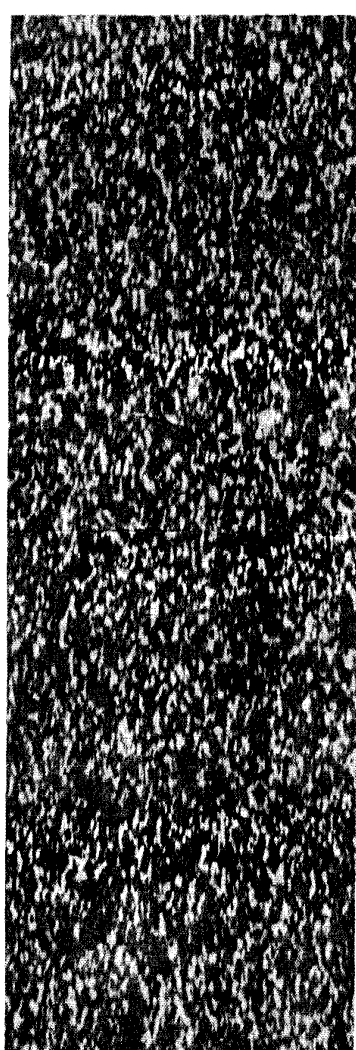
X1500



Черт. 4

Равномерное распределение β -фазы

X1500



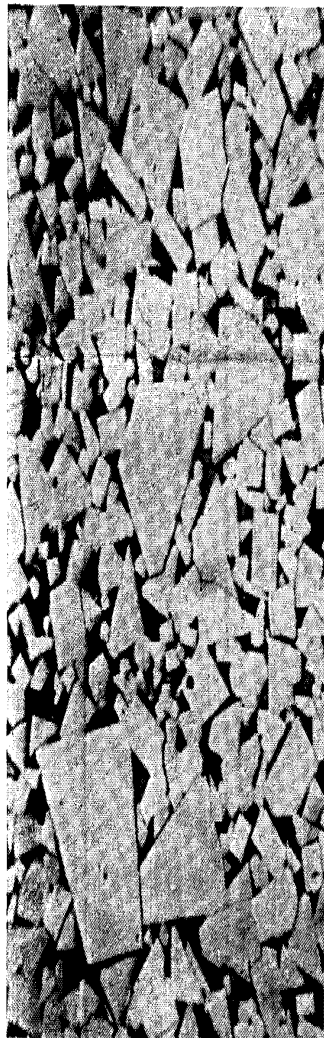
Черт. 5

Скопление β -фазы

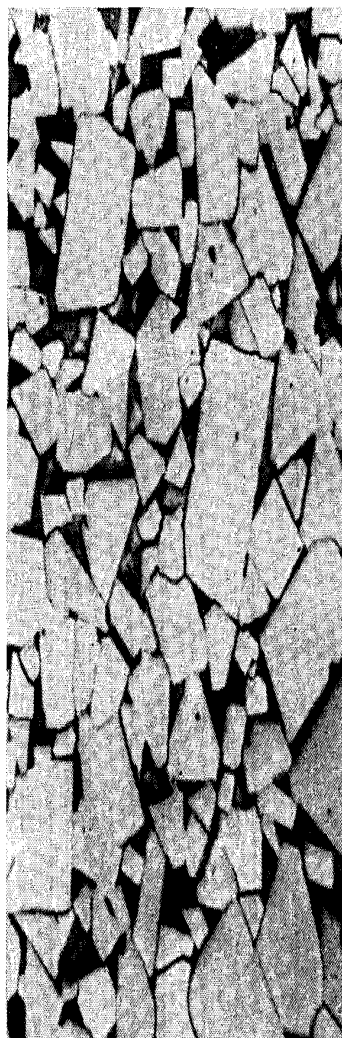
X1500



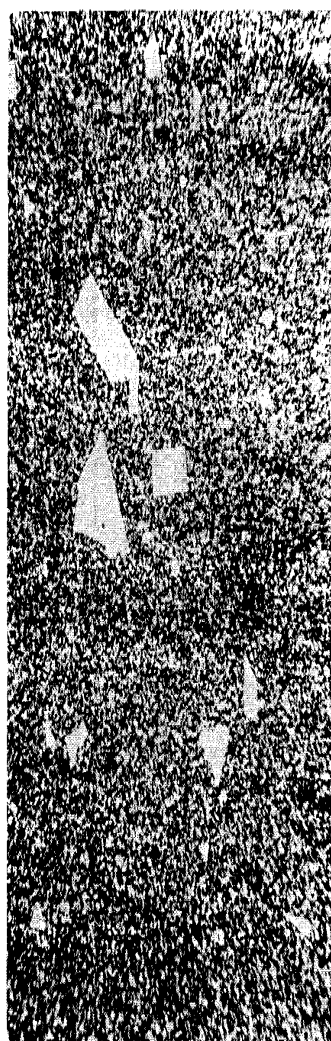
Черт. 6



Черт. 9



Черт. 10



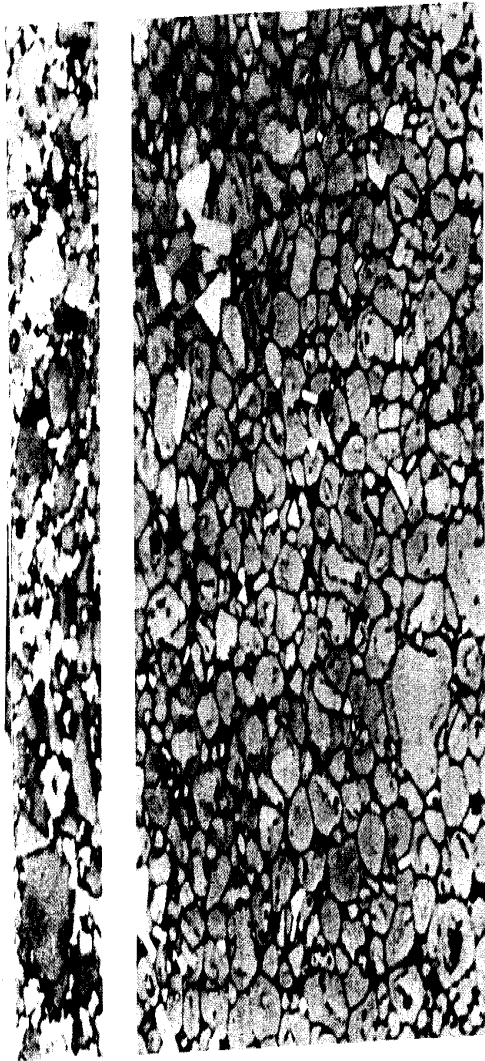
Черт. 11

ые и титано-тантало-вольфрамовые сплавы

X1500

Травление по режиму 4 и 5

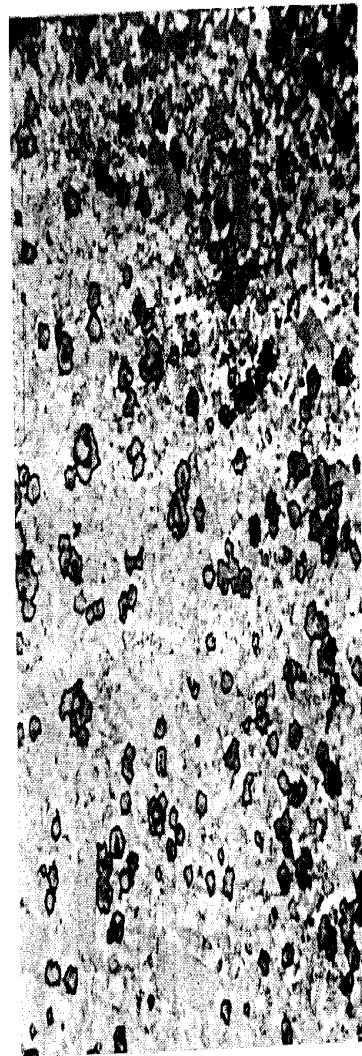
Травление по режиму 3



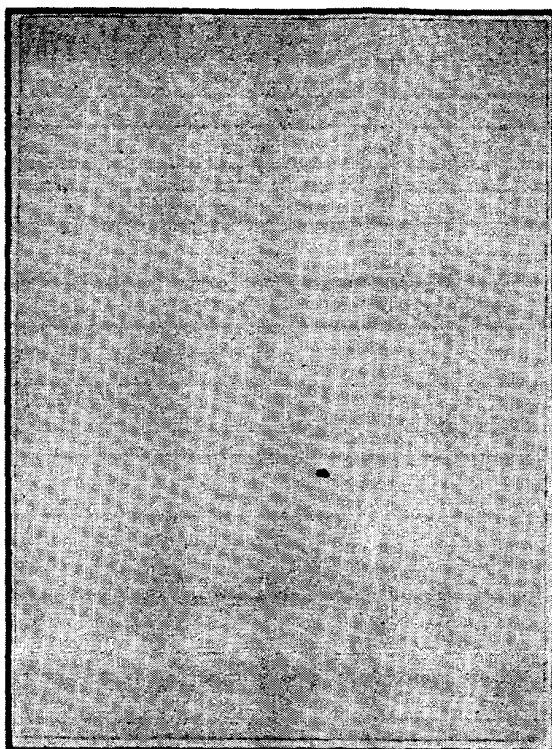
Черт. 15



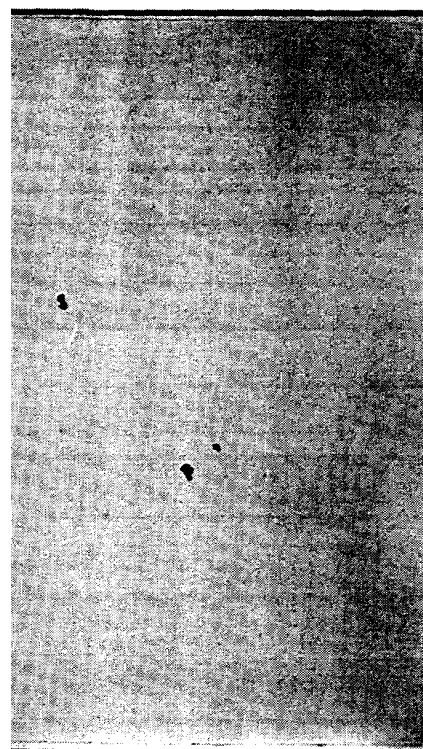
Черт. 16



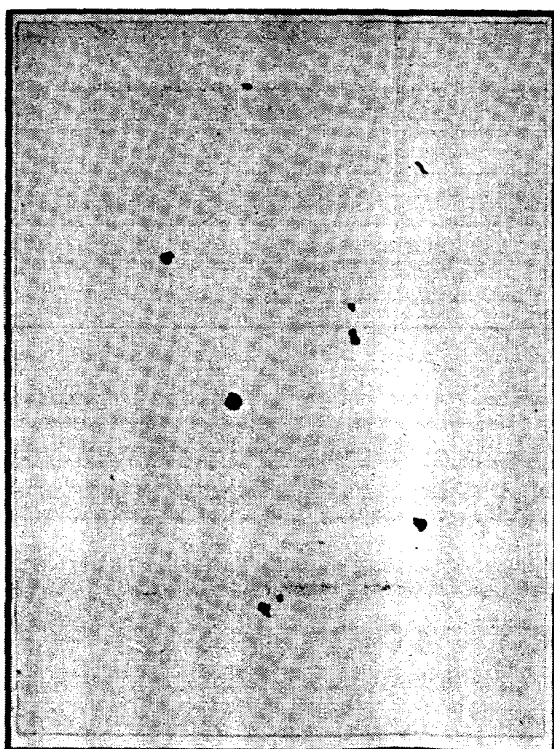
Черт. 17



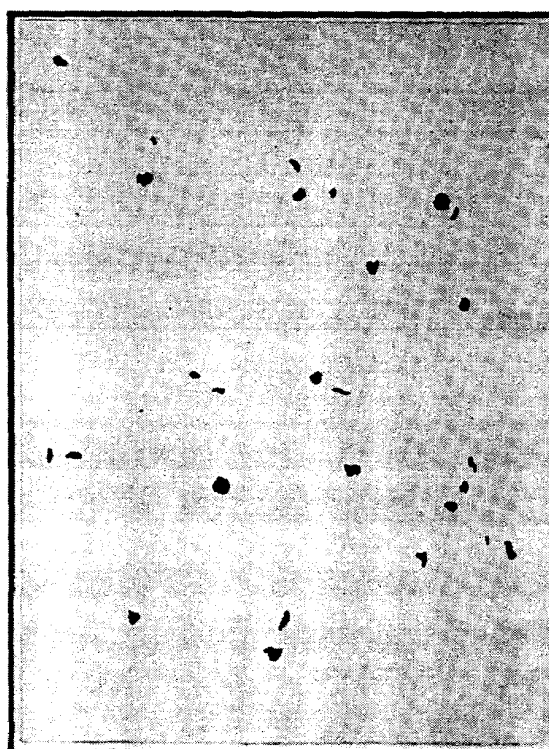
E1 (0,02 % об)
(140 пор/см²)



2 (0,06 %)
(430 / 2)

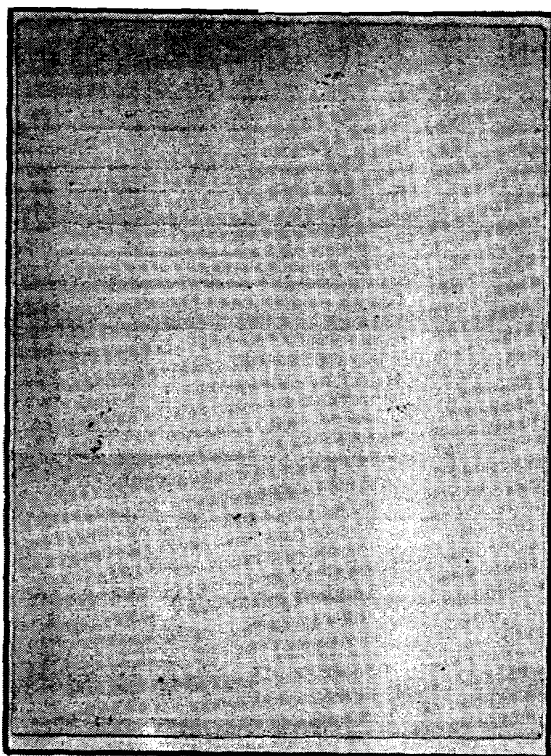


(0,2 %)
(1300 / 2)

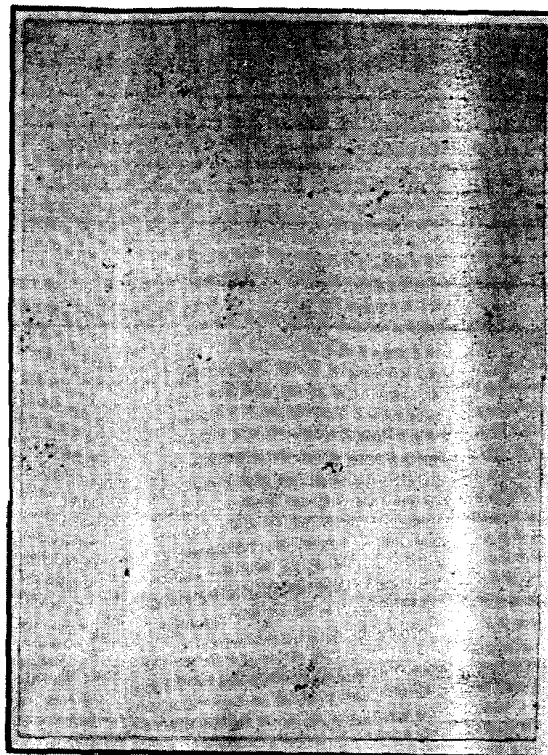


4 (0,6 %)
(4000 / 2)

2

X100

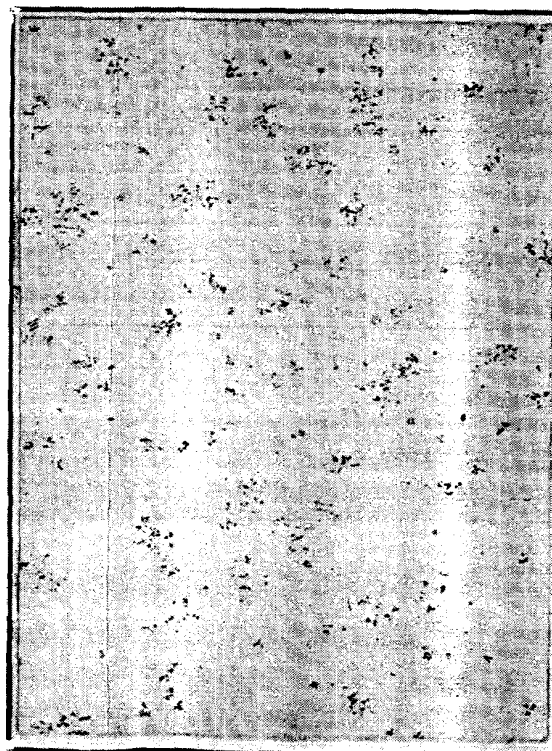
C2 1



C2 2



C2 3



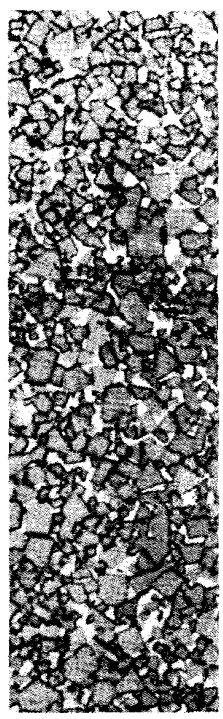
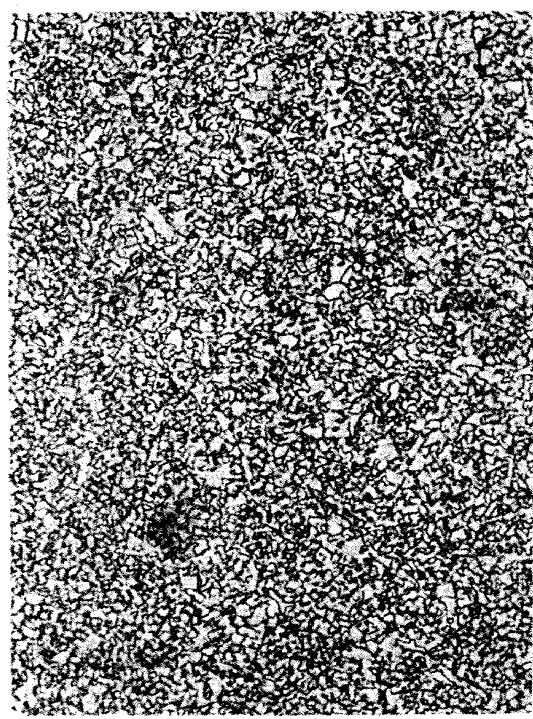
C2 4

/

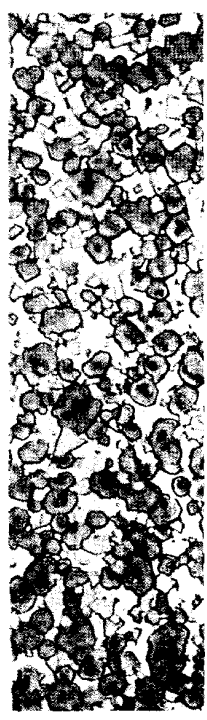
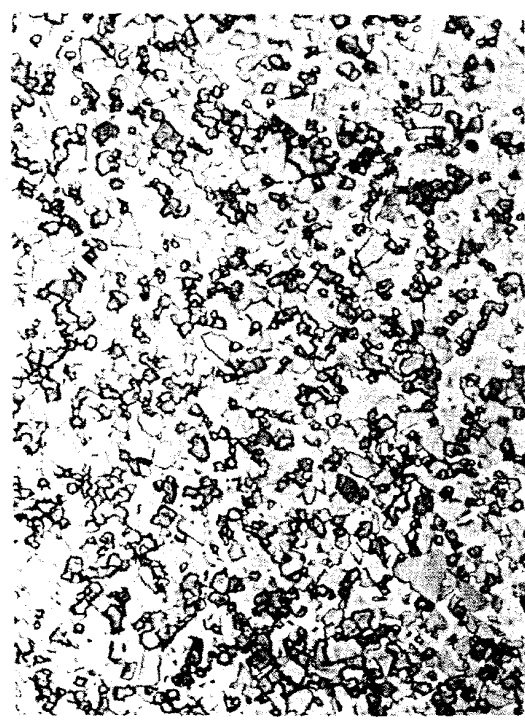
a-

a-

<



.1



.4

1500

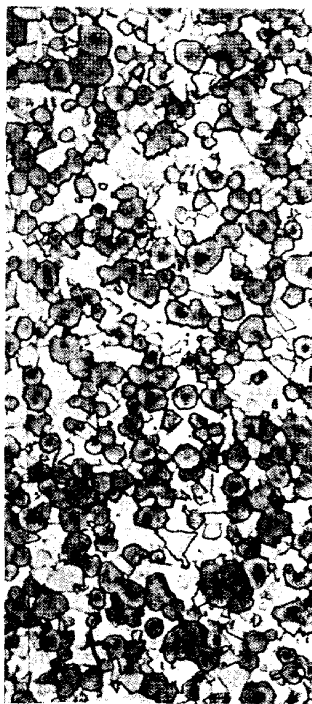
a-



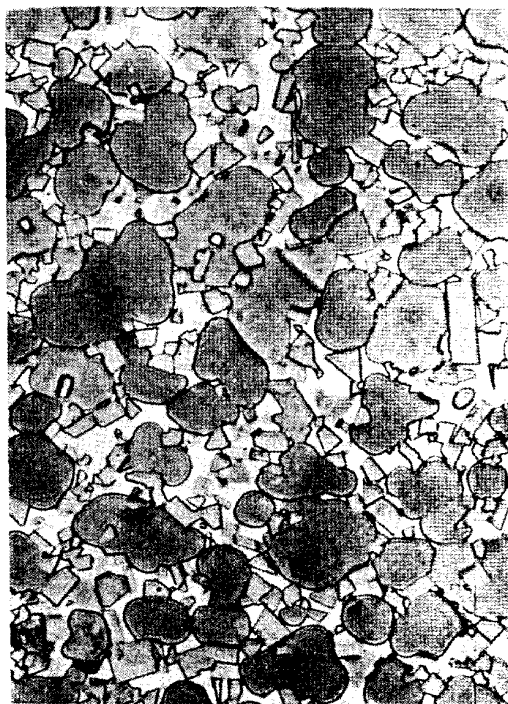
.2



.3



.5



.6

. . .
 . . .
 * .
 , 28.06.83 » . 05.12.85 0,75 , . , - . 2,0 . . 2,875 .
 - , 2,64 . . . 10000 20 .
 « » , 123840, , ,
 „3, , 256, , 2943
 , .

		»[
	-	m kg s A	1C	
		mol cd	1	
		rad sr		
	,			
			» - ; « « ' ' »	
	ISctMArfHOea-	*: CH'C		
* * *		Hz N J W V V Q S Wb 1 1 Bq Gy Sv	H 11a Die	-' ~} "1 » * 2 ^2 ' -3 3 -1 ~' -1 4 5 2 ~3 -2 ivr2 -1 3 • 2 2 ~2 "1 -2 -' 2 ~2 -2 ~2 -1 2 ~2 2 • -2